



HEARTWOOD  
HOMES

# Camp Road, St. Albans, AL1 5DX

£575,000

🛏 2 🚿 1 🚗 2



A charming and well-presented two-bedroom character cottage, ideally positioned within easy walking distance of the mainline railway station, the open green spaces of Clarence Park, and highly regarded local schooling.

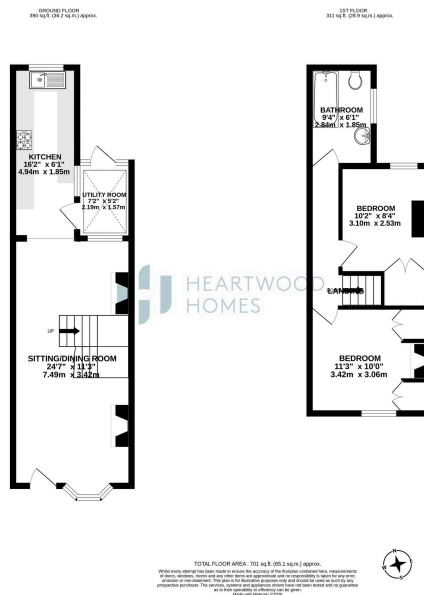
The property offers spacious and well-balanced accommodation arranged over two floors. The ground floor features a bright open-plan living and dining room with two attractive feature fireplaces, creating a warm and inviting living space, alongside a modern fitted kitchen and a useful utility room.

To the first floor are two generously sized bedrooms, a family bathroom, and access to a practical loft space providing additional storage.

Externally, the property benefits from a low-maintenance rear garden, ideal for those seeking an easy-care outdoor space.

This delightful home would make an excellent purchase for commuters and first-time buyers alike. Early viewing is highly recommended to fully appreciate the character, convenience, and lifestyle on offer.





- Charming two-bedroom character cottage in a highly convenient location
- Situated close to highly regarded local schools
- Two attractive feature fireplaces adding character and charm
- Two well-proportioned first-floor bedrooms
- Low-maintenance rear garden, ideal for commuters, first-time buyers, and investors
- Within walking distance of the mainline railway station and Clarence Park
- Open-plan living and dining room
- Modern fitted kitchen complemented by a separate utility room
- Family bathroom and useful loft space for additional storage
- EPC

