

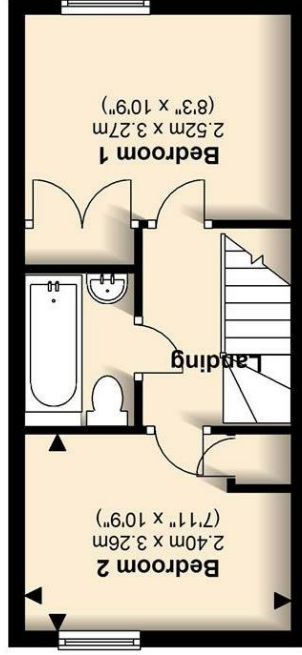
England & Wales		EU Directive 2002/91/EC
Potential	Current	
Very environmentally friendly - lower CO ₂ emissions		
Not environmentally friendly - higher CO ₂ emissions		
		(92 plus) A
		(81-91) B
		(69-80) C
		(55-68) D
		(39-54) E
		(21-38) F
		(1-20) G

Environmental Impact (CO₂) Rating

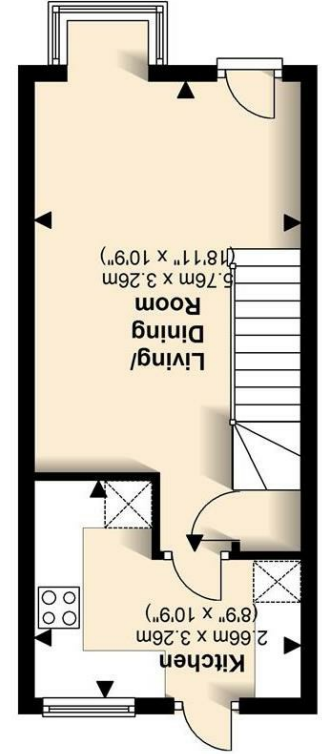
England & Wales		EU Directive 2002/91/EC
Potential	Current	
Very energy efficient - lower running costs		
Not energy efficient - higher running costs		
		(92 plus) A
		(81-91) B
		(69-80) C
		(55-68) D
		(39-54) E
		(21-38) F
		(1-20) G

Energy Efficiency Rating

Total area: approx. 50.0 sq. metres (538.7 sq. feet)
 Sketch layout only. This plan is not drawn to scale and is for identification purposes only.
 Plan produced using The Mobile Agent.



First Floor
 Approx. 24.7 sq. metres (265.4 sq. feet)



Ground Floor
 Approx. 25.4 sq. metres (273.2 sq. feet)





Property Description

A newly refurbished two bedroom mid terrace house in a popular and quiet City centre location within walking distance to Verulamium Park, the City centre and all amenities St Albans provides. The property benefits from a private garden, views over park land to the front and parking.

Rental Fees

If you are interested in renting this property then it is important you contact Daniels Estate Agents as soon as possible as other tenants may be interested too. Daniels will need you to provide certain information in order for us to discuss your potential tenancy with your new landlord. Once we have the initial agreement from the landlord to proceed with your application you will then be sent an e-mail confirming the proposed terms.



Living room

New modern fitted kitchen and appliances

Two double bedrooms with wardrobes

Re-fitted bathroom with shower

Gas central heating

Double glazing throughout

Off street parking

Private rear garden

EPC Rating C

Council Tax Band C

We will then need all tenants to be fully referenced by 'Rightmove Referencing' who will carry out the referencing and a credit check process on our behalf, you will need to pay the equivalent of one week's rent as a holding deposit.

Due to a change in legislation with effect from 1st June 2019 agents will no longer be able to charge tenants for this process. The same legislation also sets out that deposit amounts will be capped at five weeks' rent.

It is important that all information provided for reference purposes is accurate as if a tenant fails Right to Rent checks or the referencing process, having provided false or misleading information, the holding deposit will not be returned.



The holding deposit will also be retained by Daniels if the tenant withdraws from the proposed tenancy or fails to take reasonable steps to enter into the tenancy.

Prior to the commencement of any tenancy, Daniels Estate Agents will need to have received the first month's rent plus four weeks' rent to add to the one week's rent holding deposit (five weeks' rent in total).

