



Waverley Walk, Waverley, Rotherham, S60 8BB

£435,000

4 2 3



A Well-Presented Four Bedroom Detached Family Home

This beautifully presented four bedroom detached home offers generous and versatile living accommodation, ideal for modern family life.

The property is entered via a welcoming central entrance hallway, leading to a bright and spacious front-facing lounge enhanced by a bay window and an attractive feature fireplace, creating a warm and inviting living space. To the rear, a stylish dining kitchen provides the perfect hub for family living and entertaining, with direct access into the stunning orangery, which enjoys views over the rear garden and floods the home with natural light. Completing the ground floor is a practical utility room and a convenient cloakroom/W.C.

To the first floor, a central landing gives access to four well-proportioned bedrooms. The principal bedroom benefits from its own dressing room and a contemporary en-suite shower room. The remaining bedrooms are served by a modern family bathroom/W.C.

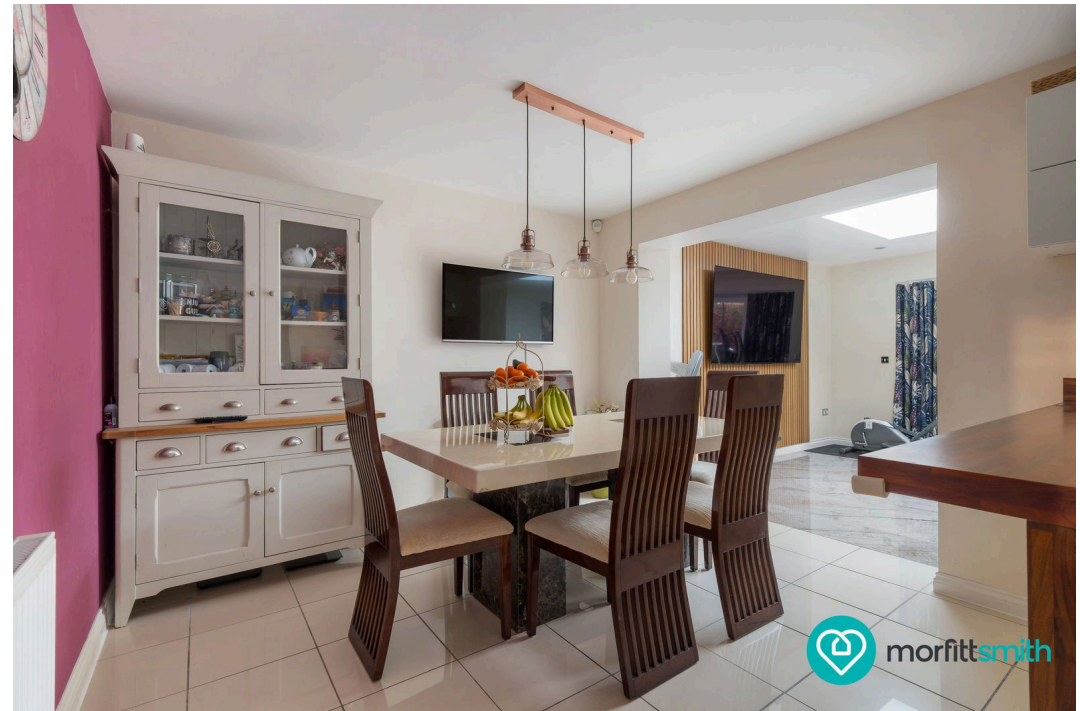
Externally, the property enjoys attractive gardens to both the front and rear, providing ideal outdoor space for relaxation and entertaining. A driveway offers off-road parking and leads to an integral garage, adding further practicality.

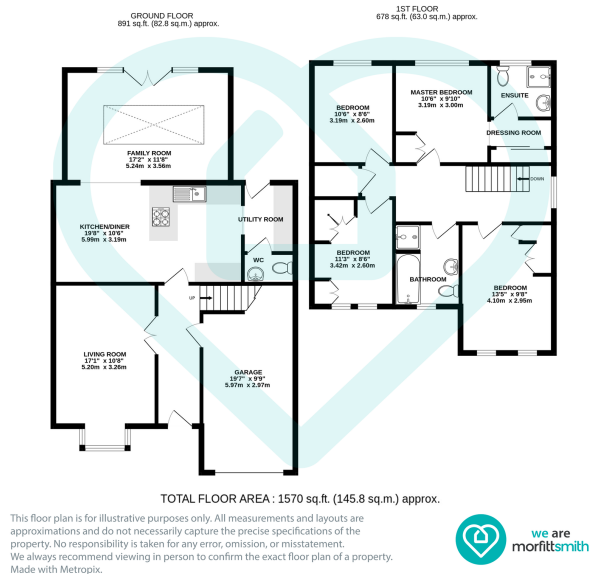
This impressive home combines well-designed living spaces with stylish features throughout and must be viewed to be fully appreciated.

About Waverley

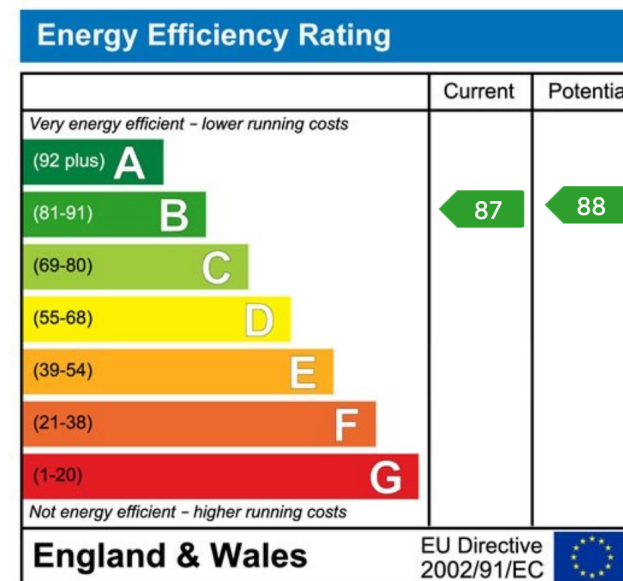
Waverley is a modern, thriving district situated between Rotherham and Sheffield, offering a blend of contemporary living and community charm. The area has been carefully developed with a mix of residential homes, green spaces, and local amenities, including shops, cafés, and schools, making it particularly popular with families and professionals.

Waverley benefits from excellent transport connections, with easy access to the M1 motorway and nearby public transport links,





- Well-presented four bedroom detached home
- Entrance hallway leading to spacious living areas
- Bay windowed lounge with feature fireplace
- Dining kitchen opening into a stunning orangery
- Utility room and cloakroom/ W.C
- Principal bedroom with dressing room and en-suite
- Family bathroom, plus three additional bedrooms
- Front and rear gardens, driveway, and integral garage
- Located in the popular Waverley district between Sheffield & Rotherham
- Excellent local amenities, schools, green spaces, and transport links



Sales | Lettings | New Homes

VAT Reg Number: 191 3588 84
Company Reg Number: 08610489
Company Reg Address: 67 Middlewood Road, Hillsborough, Sheffield, S6 4GX.

The MorfittSmith Building
67 Middlewood Road
Hillsborough
Sheffield
S6 4GX

Get in touch - arrange an appointment



0114 232 1764
sales@morfittsmith.co.uk
lettings@morfittsmith.co.uk
newhomes@morfittsmith.co.uk
www.morfittsmith.co.uk



@MorfittSmith
@MorfittSmith
MorfittSmith
Estate & Letting Agent