

## River Reach, TW11

### £1,050,000

This spacious four bedroom home is located in the popular River Roads and is part of a desirable Riverside development. Well located for schooling and transport links, it is a must see. The property has off street parking, a large garage and four double bedrooms.

River Reach is accessed via Broom Water off Broom Road. It is within easy reach of Teddington and Hampton Wick station along with Teddington High Street and Kingston Town Centre.

### Features

- Modern House
- Four Bedrooms
- Off Street Parking
- Popular Residential Cul-de-sac
- Exclusive River Access
- Garage



## River Reach, TW11

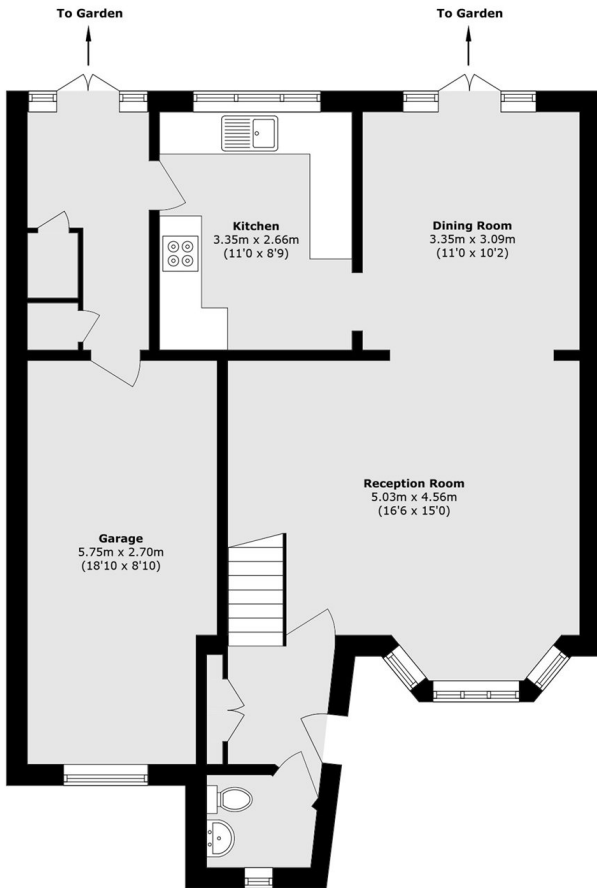
Enter into the property into a spacious entrance hallway which leads into the through reception room. This space has original parquet flooring and plenty of natural light. Double doors from the dining area provide direct access to the garden bringing indoor and outdoor living. The kitchen is well presented and offers the opportunity for further modernisation. To the side of the property there is access to the garage and doors onto the garden to the rear.

The first floor comprises four well-proportioned bedrooms, including three spacious doubles, all of which benefit from built-in storage. One of the front-facing bedrooms also enjoys access to a private balcony. A family bathroom, complete with a separate shower enclosure, serves this floor, while access to the loft provides additional storage space.

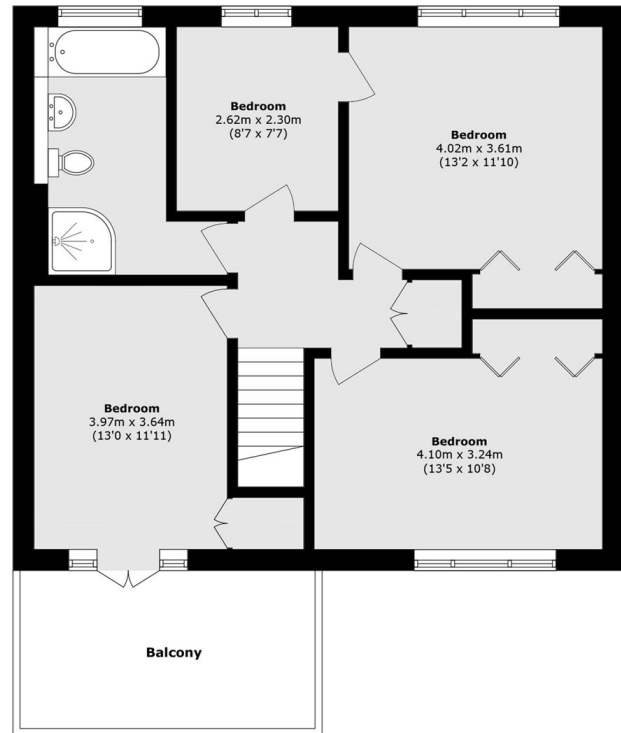
Externally, the property offers off-street parking via a driveway to the front. Residents can also take advantage of access through Riverside Court, which leads directly to the riverbanks, providing a tranquil and picturesque setting within the development.



# River Reach, Teddington, TW11



**Ground Floor**



**First Floor**

Total area (approx.): 103.1 sq. m (1109.7 sq. ft)

Balcony area (approx.): 9.4 sq. m (101.1 sq. ft)