

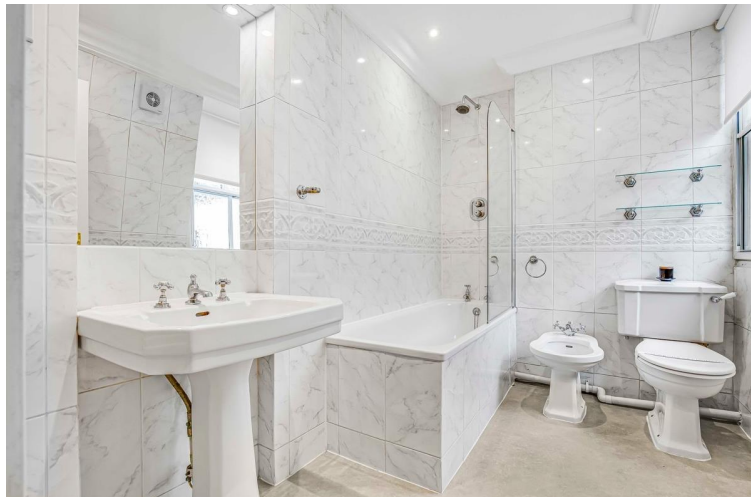


Wimpole Street, London W1G

Price £1,275 per week - Furnished,
Unfurnished







Description

Extremely spacious top floor maisonette on the sought-after Wimpole Street, in the heart of Marylebone Village and close to all the lovely amenities of Marylebone High Street. This bright, split level apartment comprises a large reception room, separate kitchen, three double bedrooms and two bathrooms (one en-suite).

Council tax band: G. Rent is payable on a monthly basis and you may be required to pay more than a month's rent in advance, depending on your circumstances. You will be required to pay a 1 week holding deposit following a successful offer. Tenancies with annual rents up to £50,000 will require a 5 weeks' security deposit, while those exceeding this threshold will require a 6 weeks' deposit. Utility bills, council tax, telephone line and broadband are not included in the rent. As well as paying the rent, you may also be required to make some additional permitted payments. If your tenancy does not qualify as an AST, additional fees may apply. Please visit jll.co.uk/fees for details of fees that may be payable when renting a property. To check broadband and mobile phone coverage please visit Ofcom here ofcom.org.uk/phones-telecoms-and-internet/advice-for-consumers/advice/ofcom-checker

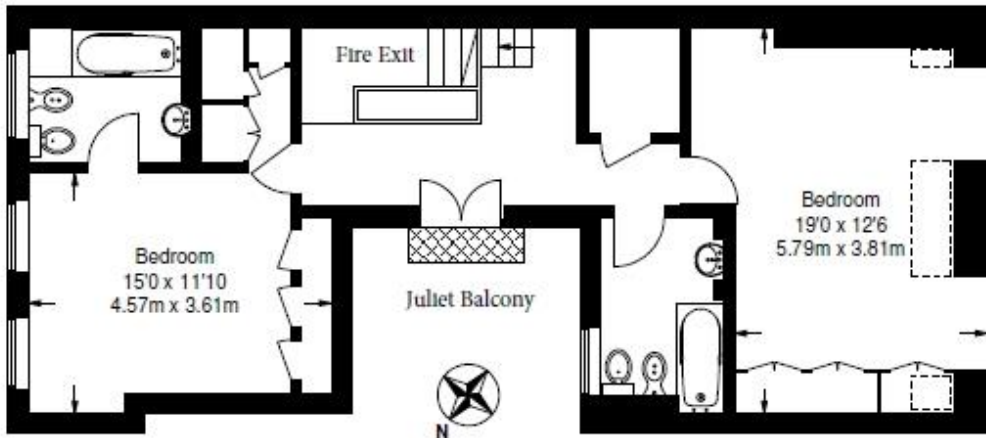
- Three double bedrooms
- One family bathroom and one en-suite
- Reception room
- Separate kitchen
- Third and fourth floor
- Unfurnished or Furnished by separate negotiation
- Approx. 1,516 sq ft (140 sq m)
- EPC: D
- Council tax: Band G

Floorplan

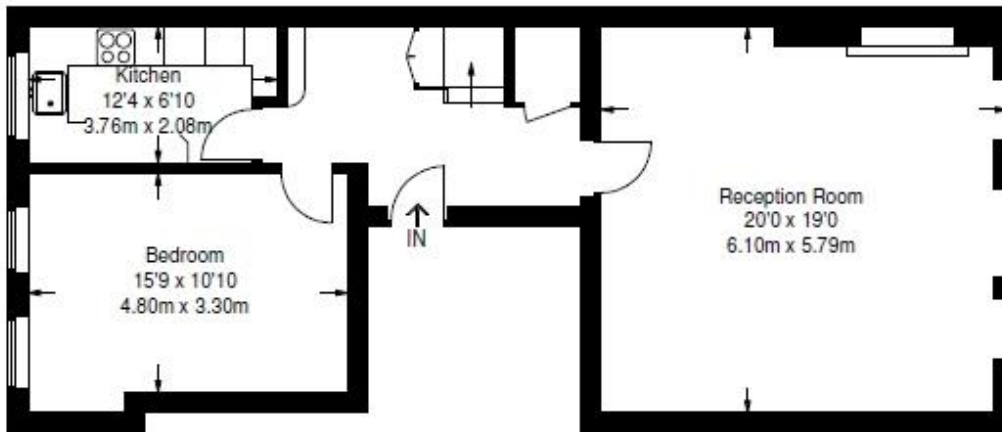
1,516 sq ft | 141 sq m

Wimpole Street


Approximate Gross Internal Area
(Excluding Reduced Headroom)
1500 sq ft / 139.3 sq m
Reduced Headroom = 16 sq ft / 1.5 sq m
Total = 1516 sq ft / 140.8 sq m



Fourth Floor
(Including Reduced Headroom)
740 sq ft / 68.7 sq m



Third Floor
776 sq ft / 72.1 sq m

 = Reduced headroom below 1.5 m / 5'0

Not to scale, for guidance only and must not be relied upon as a statement of fact.
All measurements and areas are approximate only and have been prepared in
accordance with the current edition of the RICS Code of Measuring Practice.