



RIDGEWAY

RESIDENTIAL SERVICES



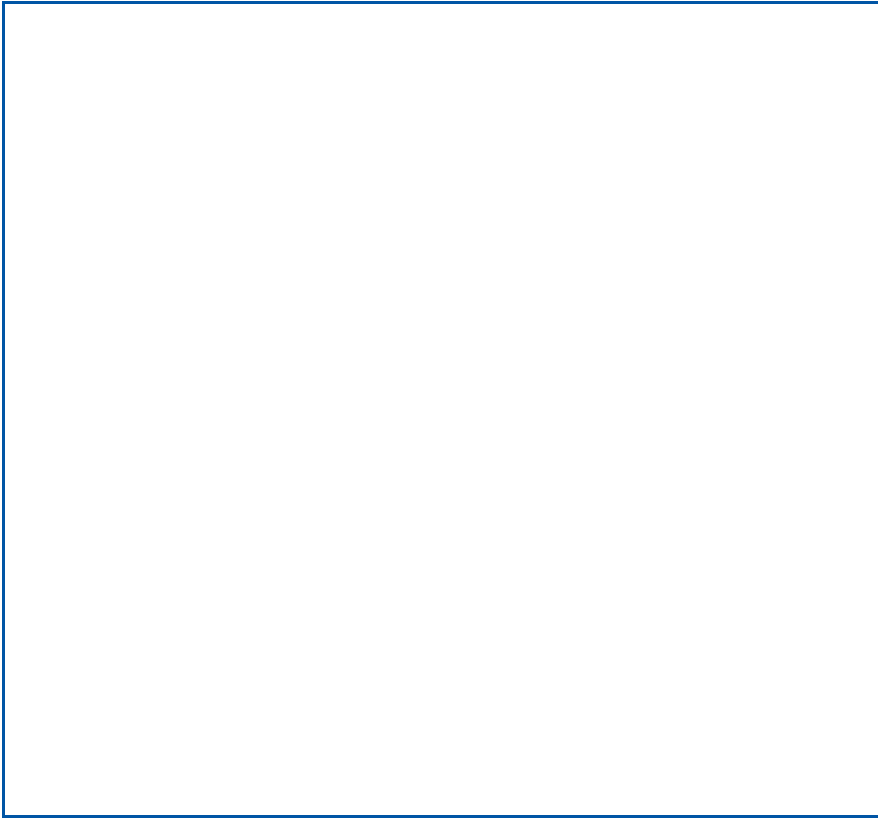
73 Whitbarrow Road

Lymm, Warrington, WA13 9AY

Offers In Excess Of £425,000



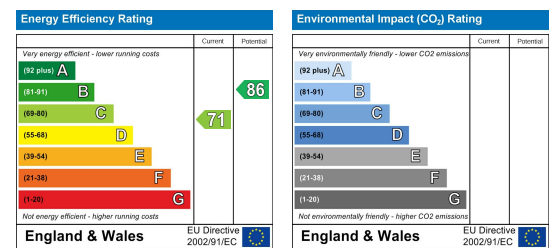
Floor Plan



Area Map



Energy Efficiency Graph



Viewing

Please contact us on 01925 756931 if you wish to arrange a viewing appointment for this property or require further information.

- Well Presented Extended Semi ■ Spacious Lounge Detached Property
- Open Plan Family Living ■ Utility Room & Cloakroom Kitchen
- Three Bedrooms ■ Modern Bathroom
- Large Driveway

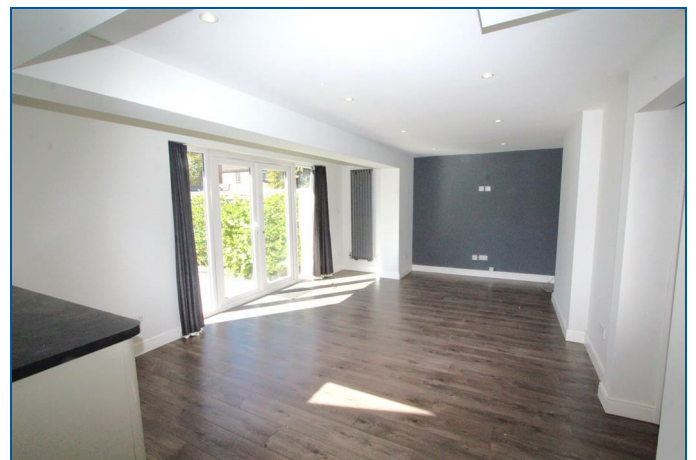
This impeccably presented and thoughtfully extended three-bedroom semi-detached residence offers an exceptional standard of living, combining elegant interiors with generous and versatile accommodation, all within close proximity to the charming Lymm Village and its array of boutique amenities.

The ground floor showcases a beautifully appointed lounge, designed for both refined relaxation and stylish entertaining. At the heart of the home lies a stunning open-plan dining kitchen, finished to a high specification and perfectly suited to modern family living and social gatherings. Complementing this space is a well-equipped utility room and a discreetly positioned downstairs cloakroom.

To the first floor, the property features three beautifully proportioned bedrooms, each offering comfort and style, alongside a sleek and contemporary family bathroom finished with quality fittings.

Ideally positioned within easy reach of Lymm Village, residents can enjoy an enviable lifestyle with access to independent shops, cafés, and highly regarded schools, all set within a sought-after and picturesque setting.

This exceptional home presents a rare opportunity to acquire a residence of true quality and sophistication. Early viewing is strongly advised to fully appreciate all that this outstanding property has to offer.



These particulars, whilst believed to be accurate are set out as a general outline only for guidance and do not constitute any part of an offer or contract. Intending purchasers should not rely on them as statements of representation of fact, but must satisfy themselves by inspection or otherwise as to their accuracy. No person in this firm's employment has the authority to make or give any representation or warranty in respect of the property.