



*jordan fishwick*

Apt 15 Spectrum Block 1, Blackfriars Road,  
£1,300 Per Calendar Month



## Spectrum Block 1 Salford M3 7BJ

£1,300 Per Calendar Month



### The Property

Available Now. This 1st floor two double bedroom apartment located in the popular Spectrum development, close to Deansgate and the Arndale shopping centre. The apartment comprises of: entrance hallway, open plan lounge and dining kitchen, a balcony overlooking the new Greengate area, two double bedrooms with master having full en-suite bathroom and a separate three piece shower room. No parking included. Tax Band D. EPC Rating C. PROFESSIONALS ONLY. £35 pcm Water Charge.


REPOSIT (Nil Deposit option) Available for this property. There is a NO pet policy at Spectrum stated by Building Management - ONLY Service dogs allowed.

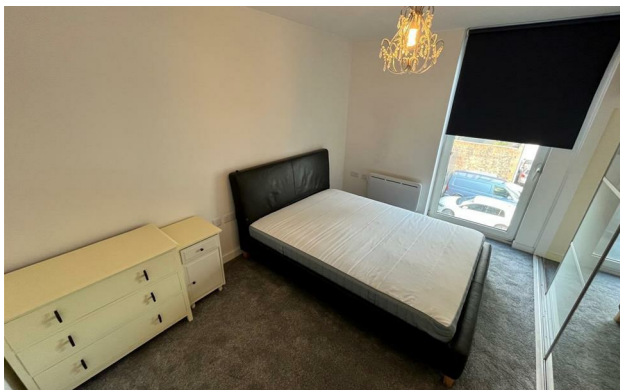
**\*VIDEO/ PHOTO OFFERS NOT ACCEPTED - PLEASE BOOK AN INPERSON VIEWING\***

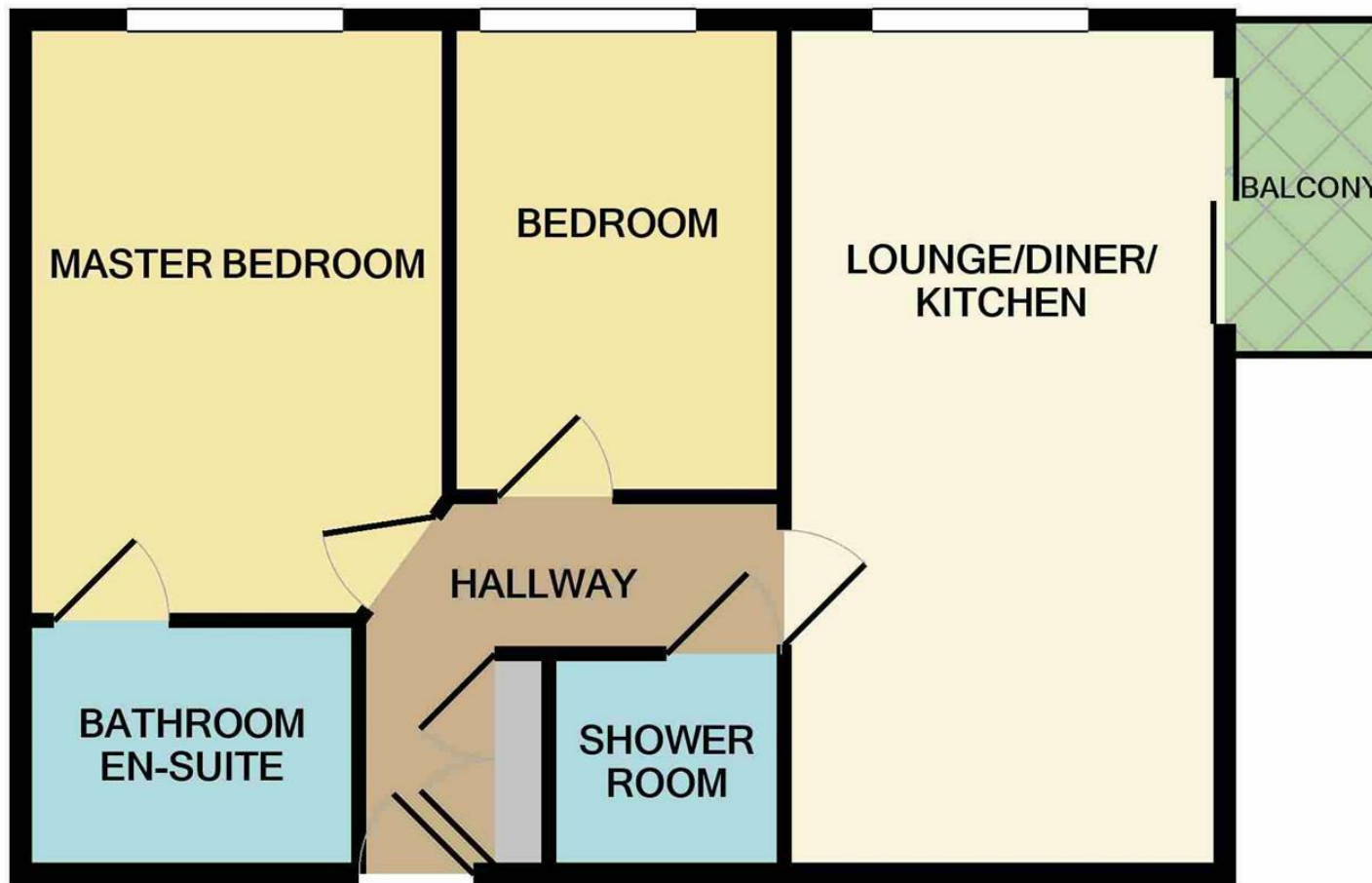


- Available Now
- 1st Floor Apartment
- Fully furnished w/ Balcony
- Double bedrooms
- No Parking included
- Tax Band D
- EPC Rating C
- £35 pcm Water Charge
- Close to City Centre



Energy Efficiency Rating		
	Current	Potential
Very energy efficient - lower running costs		
(92 plus) <b>A</b>		
(81-91) <b>B</b>		
(69-80) <b>C</b>	<b>75</b>	<b>81</b>
(55-68) <b>D</b>		
(39-54) <b>E</b>		
(21-38) <b>F</b>		
(1-20) <b>G</b>		
Not energy efficient - higher running costs		
<b>England &amp; Wales</b>	EU Directive 2002/91/EC 	





Measurements are approximate. Not to scale. Illustrative purposes only  
Made with Metropix ©2021



These particulars are believed to be accurate but they are not guaranteed and do not form a contract. Neither Jordan Fishwick nor the vendor or lessor accept any responsibility in respect of these particulars, which are not intended to be statements or representations of fact and any intending purchaser or lessee must satisfy himself by inspection or otherwise as to the correctness of each of the statements contained in these particulars. Any floorplans on this brochure are for illustrative purposes only and are not necessarily to scale.

Offices at: Offices at Chorlton, Didsbury, Disley, Hale, Glossop, Macclesfield, Manchester Deansgate, Manchester Whitworth Street, New Mills, Sale, Wilmslow and Withington