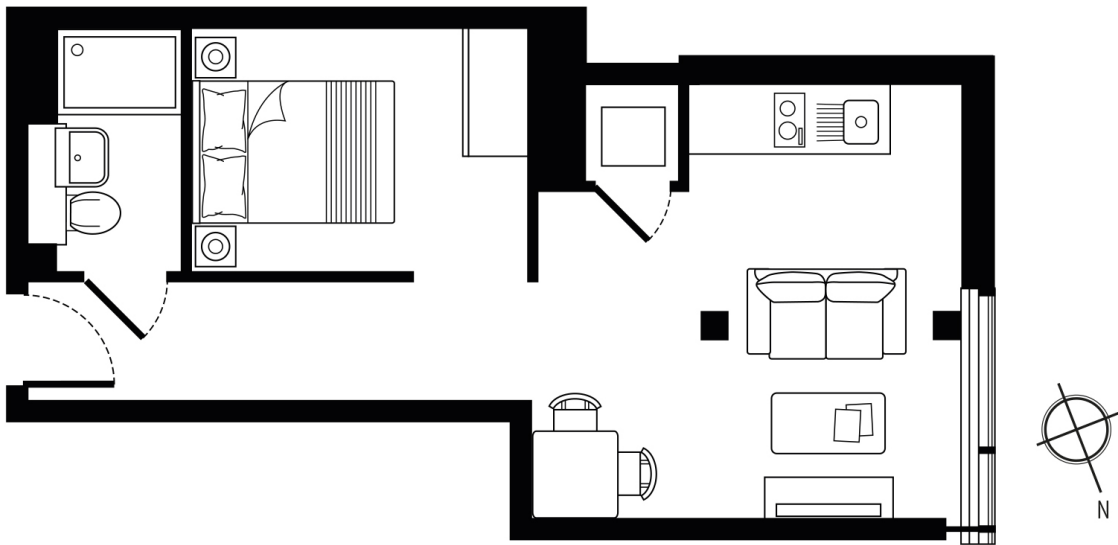


HIGH STREET, SL1

£1,100 pcm

This modern eighth-floor studio features a video entryphone system and lift access within a secure, purpose-built building. The interior includes a washing machine and essential white goods for convenient living.

- Modern Studio
- 8th Floor
- Lift Access
- Slough Station
- High Street Amenities
- EPC Rating C



| | | |
|--------------------|-----------------|-------------------|
| LIVING AREA | 4.0 x 4.0 m | 13'0" x 13'0" |
| BEDROOM AREA | 3.2 x 2.2 m | 10'5" x 7'2" |
| TOTAL AREA: | 33 SQ.M. | 355 SQ.FT. |

LiFE RESIDENTIAL

203 Trentham Court, Victoria
Road, London, W3 6BT
Sales: 020 3668 1112
Lettings: 020 3668 1111

Energy Rating: C. We aim to make our particulars both accurate and reliable. However they are not guaranteed; nor do they form part of an offer or contract. If you require clarification on any points then please contact us, especially if you're traveling some distance to view. Please note that appliances and heating systems have not been tested and therefore no warranties can be given as to their good working order.