



18 Freya Close, Middleton-on-Sea

Guide Price £315,000

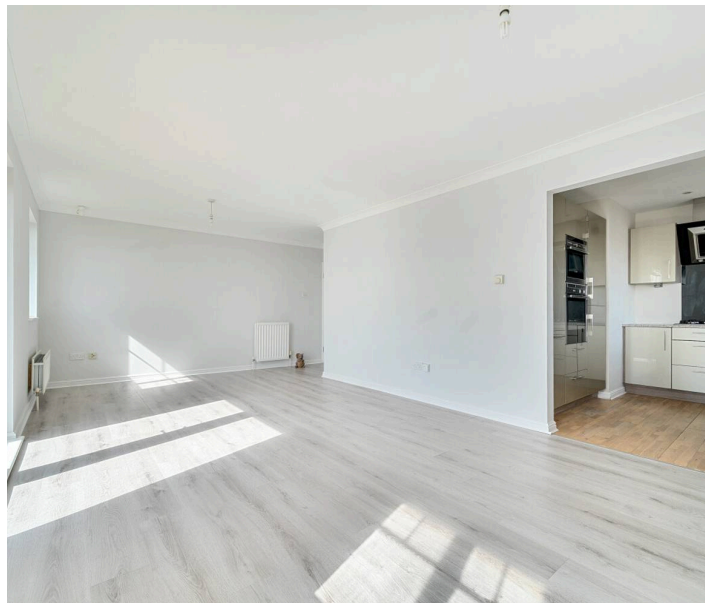


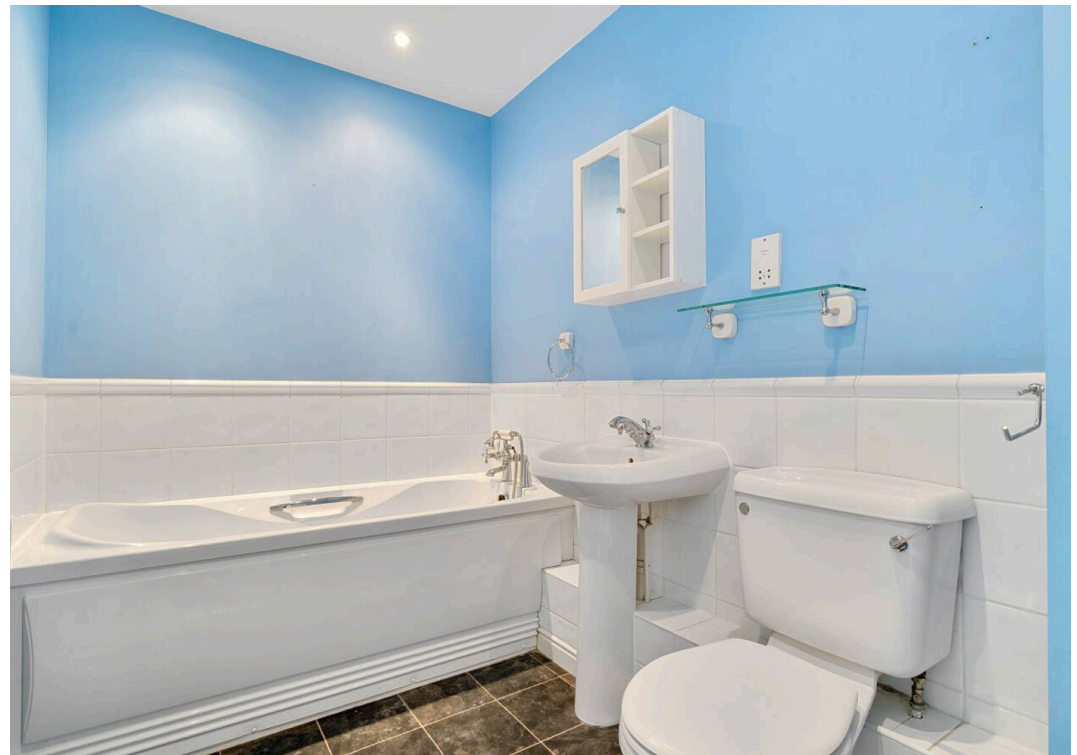
18 Freya Close

- Beachfront Apartment
- Panoramic Sea Views & Balcony
- Private, Gated Development
- 708 Sq Ft of Accommodation
- 2 Bedrooms, 2 Bath/Shower Rooms
- Recently Redecorated & New Flooring
- 2nd Floor with Lift & Stairs
- Garage in Nearby Block & No Onward Chain

Located within the popular Saxon Reach private estate, this immaculately presented beachfront apartment provides 708 sq ft of accommodation and offers a rare opportunity to indulge in seaside luxury living. Situated on the second floor and with the convenience of a lift, the property boasts breath-taking sea views from the sitting room and kitchen. Now offered for sale with the advantage of no onward chain, the property has been recently redecorated and has new flooring throughout.

Accessed via the secure communal entrance there are stairs or a lift to the second floor. Upon entering the apartment, you are greeted by an entrance hall with a store cupboard, loft hatch with access to a large storage area and the main bathroom. The two bedrooms both enjoy far reaching views of the South Downs to the north, with the principal bedroom also having an en-suite shower room. Passing along the hallway, the sitting room features a balcony and is semi-open plan to the modern fitted kitchen.







THIRD FLOOR

Freya Close, Middleton On Sea, Bognor Regis

Approximate Area = 708 sq ft / 65.7 sq m

For identification only - Not to scale



Floor plan produced in accordance with RICS Property Measurement 2nd Edition, Incorporating International Property Measurement Standards (IPMS2 Residential). © natchecom 2025. Produced for Henry Adams. REF: 1349407

Outside, the property includes a garage and parking, providing convenient storage and hassle-free parking arrangements. The convenience of no onward chain adds to the allure of this property, making it a desirable option for those looking to make a swift and seamless move.

Saxon Reach is a private and gated development located a short distance east of the Middleton village centre and offers direct access for residents to the beach. A range of local facilities and independent shops including a post office will be found upon the parade at Middleton. The Middleton Sports Club is located on Sea Lane and is a lovely traditional club established in 1926 with cricket, tennis & squash courts, a bowling green, gym, and popular restaurant. Felpham golf club and Arun Leisure Centre with swimming pool, are also within easy reach.

What3Words [///fight.crazy.alive](https://www.what3words.com/#!/fight.crazy.alive)

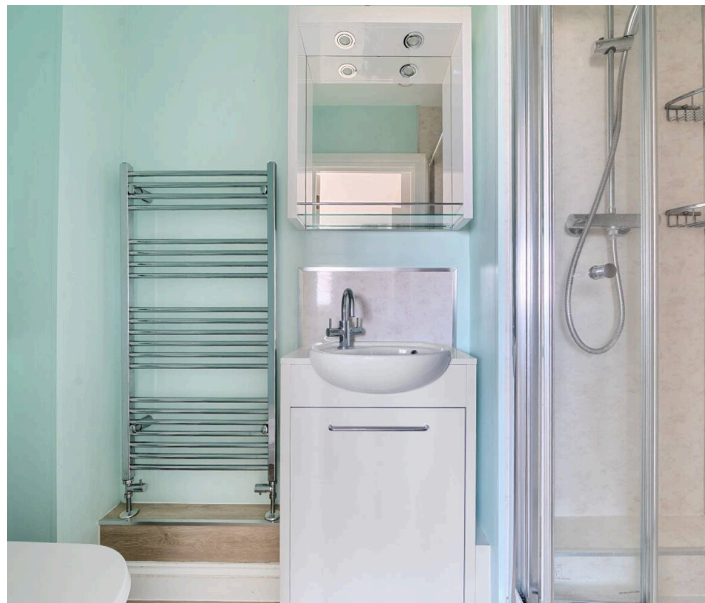
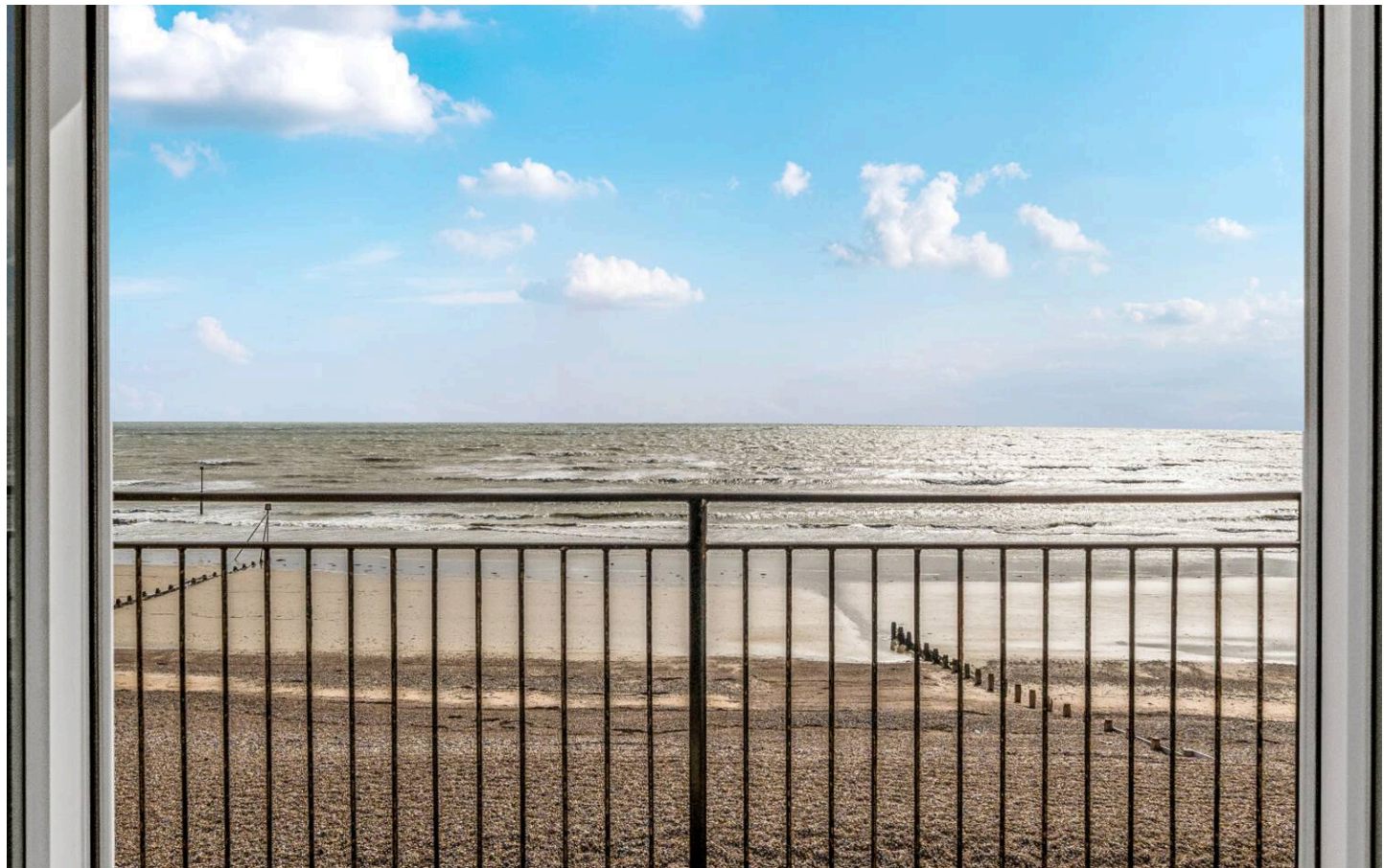
Tenure: We understand there is a 999 year lease from 1st January 1997.

Maintenance Charge: We understand the maintenance charge is approximately £2,459.54 p.a.

Ground Rent: We understand the ground rent is £325 p.a. (payable bi-annually).

Tenure: Leasehold & Council Tax Band: D

EPC Energy Efficiency Rating: C





Henry Adams - Middleton on Sea

Henry Adams LLP, Old Bank House, 128 Middleton on Sea - PO22 6DB

01243 587687

middleton@henryadams.co.uk

www.henryadams.co.uk

Agents Note - Our particulars are for guidance only and are intended to give a fair overall summary of the property. They do not form part of any contract or offer, and should not be relied upon as a statement or representation of fact. Measurements, areas and distances are approximate only. Photographs may include lifestyle shots and pictures of local views. No undertaking is given as to the structural condition of the property, or any necessary consents or the operating ability or efficiency of any service, system or appliance. Please ask if you would like further information, especially before you travel to the property.