



Grand Union Way, Eccles

Manchester



Offers in Region of **£170,000**

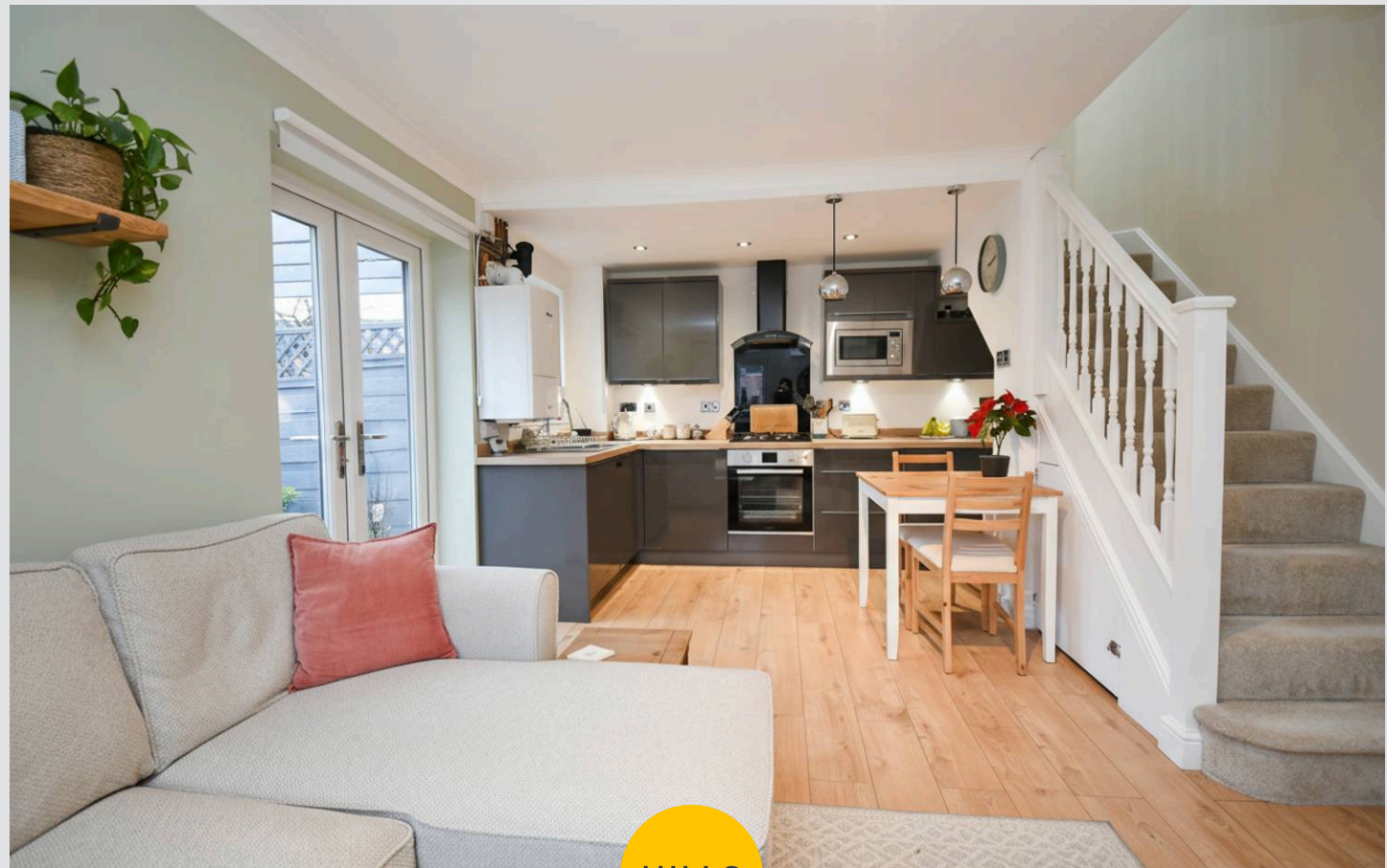
35 Grand Union Way

Eccles, Manchester

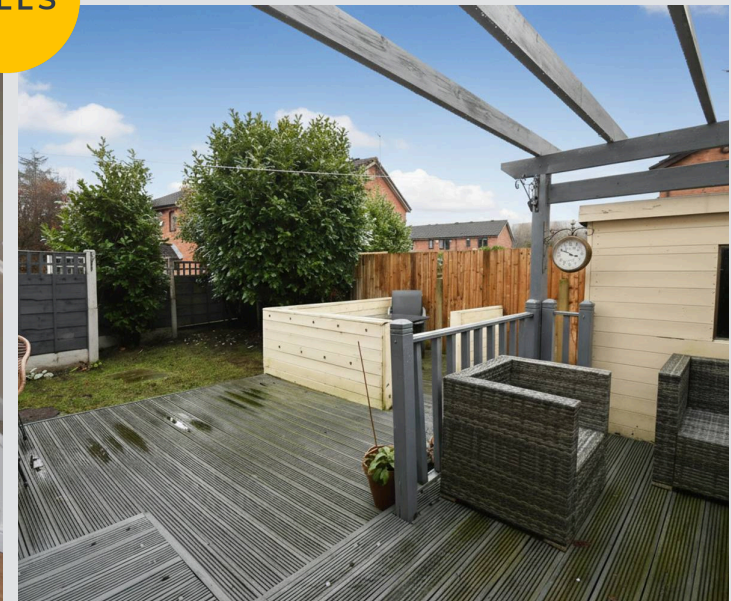
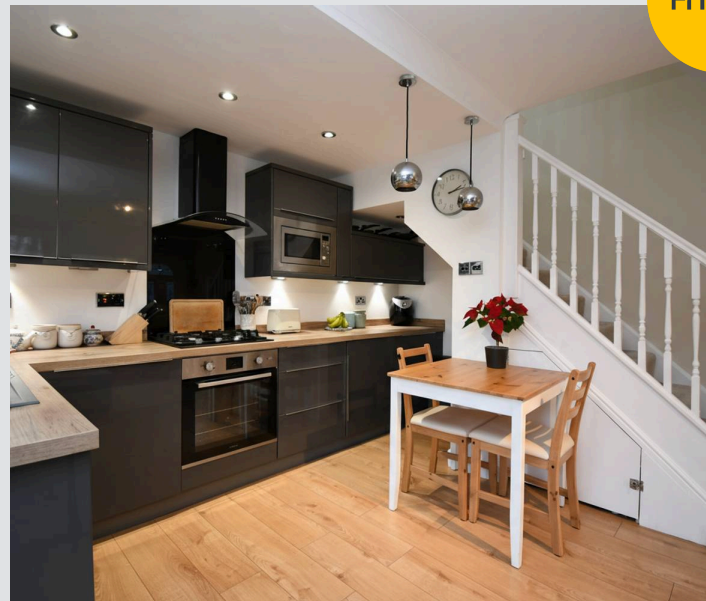
Immaculate one-bed home in sought-after M30. Open plan living, modern kitchen, stylish bathroom, garden, parking. Close to schools, amenities, and transport links. Ideal first buy or downsize. Council Tax band: A

Tenure: Freehold

- Fabulous First Time Buy or Perfect Downsize
- Presented to a Show Home Standard Throughout
- Located Within a Popular Development of M30
- Open Plan Layout to the Ground Floor
- Contemporary Fitted Kitchen with Integral Appliances
- Spacious Light & Airy Bedroom
- Newly Fitted Bathroom
- Well Maintained Low Maintenance Garden and Allocated Parking Space
- Surrounded by Excellent Amenities & Transport Links



HILLS



Entrance Hallway

Lounge

12' 5" x 17' 3" (3.78m x 5.26m)

Kitchen / Diner

12' 4" x 5' 11" (3.76m x 1.80m)

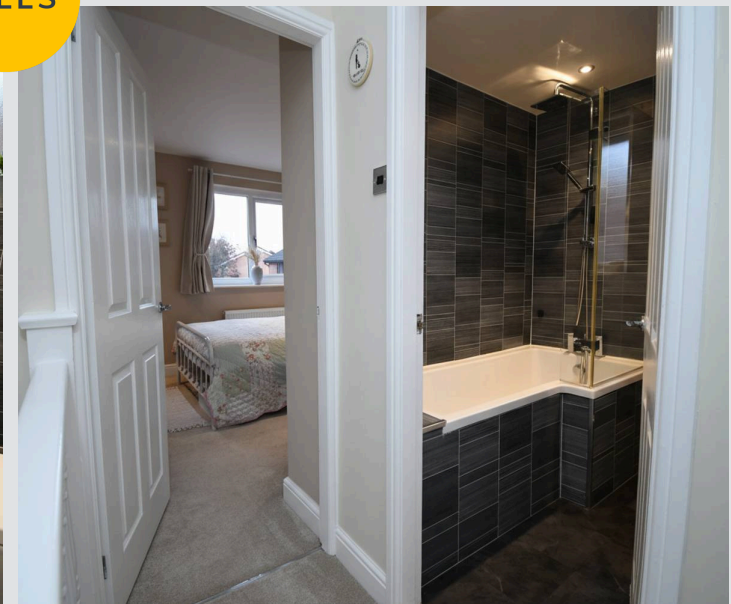
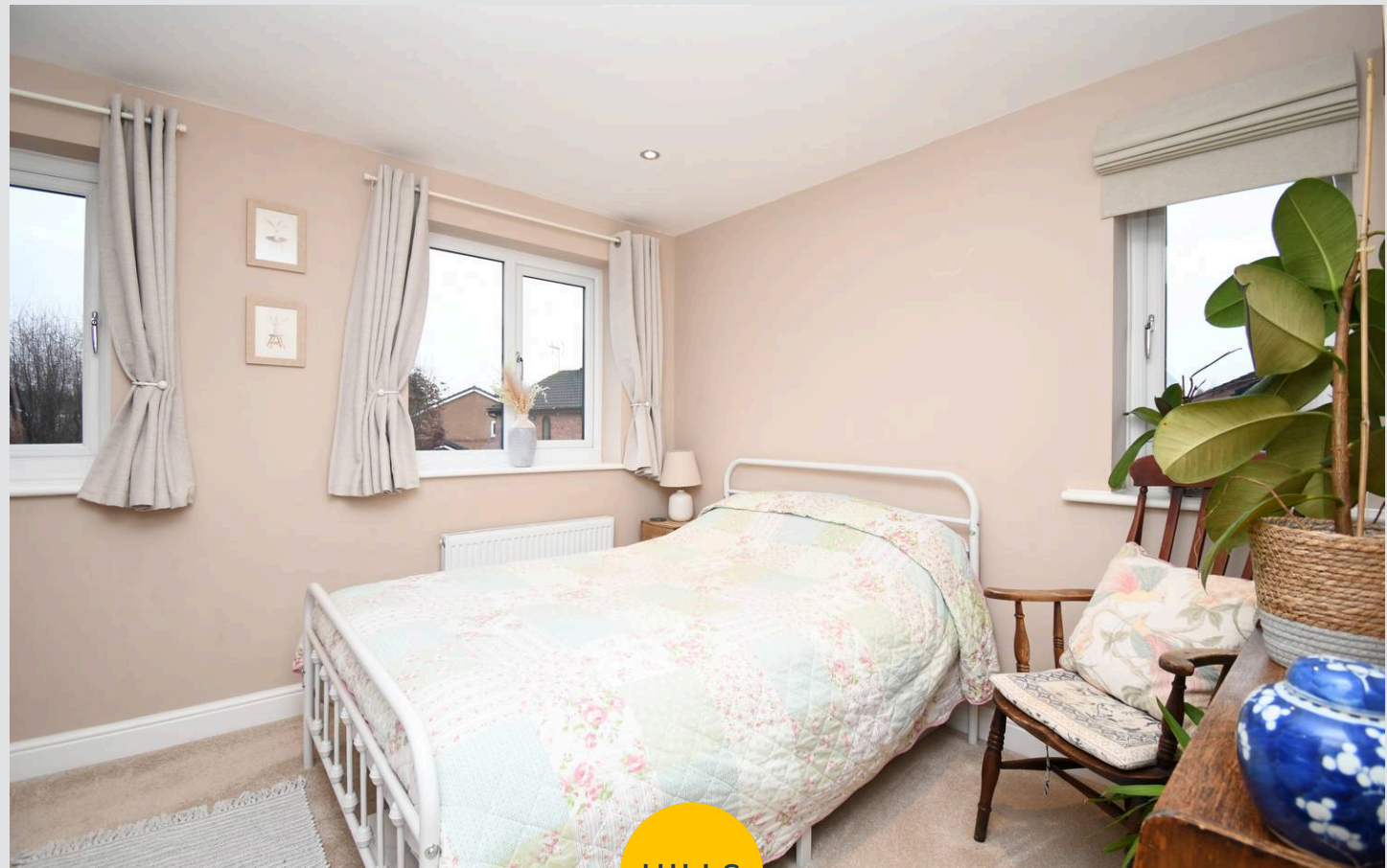
Landing

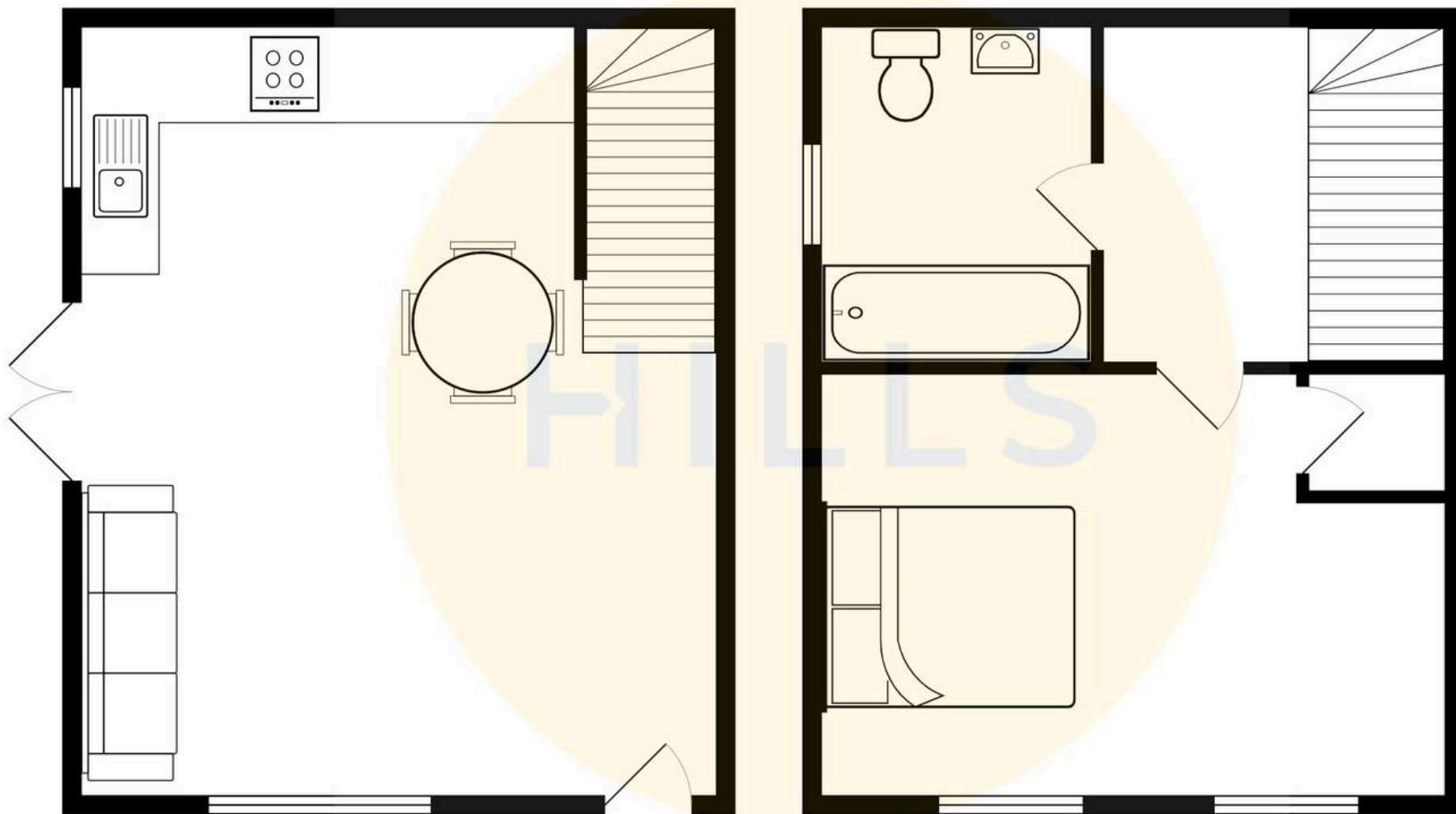
Bedroom One

9' 9" x 12' 5" (2.97m x 3.78m)

Bathroom

7' 6" x 6' 3" (2.29m x 1.91m)







Hills | Salfords Estate Agent

Hills Residential, Sentinel House Albert Street – M30 0SS

0161 707 4900

sales@hills.agency

www.hills.agency/



By law, we are required to conduct anti-money laundering checks on all potential buyers and sellers. In line with HMRC guidelines, our trusted partner, Coadjute, will securely manage these checks on our behalf. A non-refundable fee of £45 + VAT per person will apply, and Coadjute will handle the payment. Once an offer is accepted, Coadjute will send a secure link for you to complete the biometric checks. These checks must be completed before we can send the memorandum of sale to all parties. PLEASE NOTE: The Agent has not tested any equipment, fixtures, fittings or services so cannot verify that they are in working order or fit for the purpose. References to the properties tenure are based on information supplied by the seller. You are advised to check the availability of this property before travelling any distance to view. Every effort has been made to ensure these particulars are correct and not misleading but their accuracy is not guaranteed nor do they form part of any contract.