



111 Firth Park Crescent, Sheffield
£150,000

111 Firth Park Crescent

Sheffield, Sheffield

HMO for sale with 11.9% yield at asking price! Calling investors looking for a ready made investment - this let out HMO property is available for sale now. Call today to view.

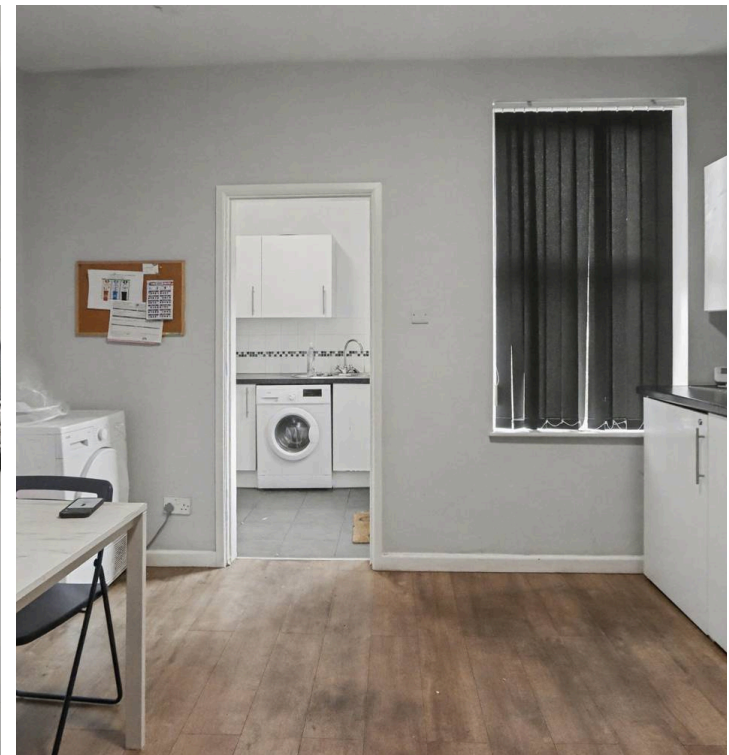
Council Tax band: A

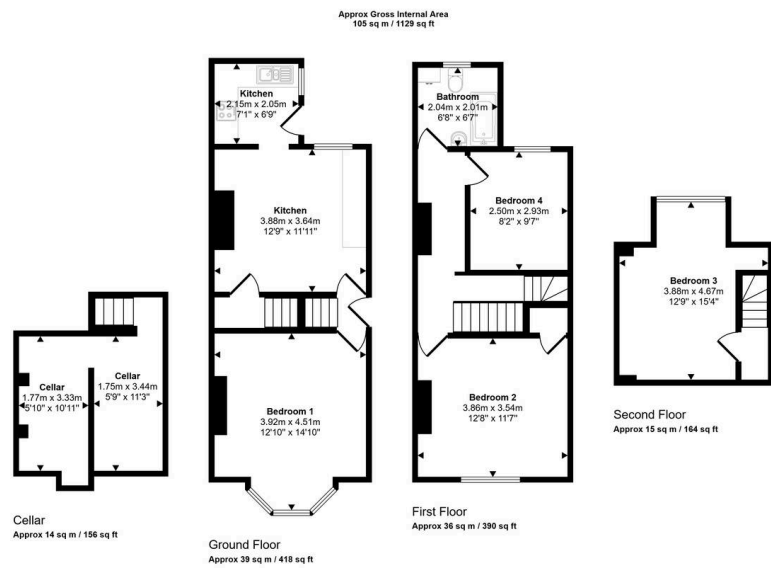
Tenure: Leasehold

EPC Energy Efficiency Rating: E

EPC Environmental Impact Rating: E

- HMO - Ready Made Investment with 11.9% Yield!
- Brilliant Commuting Location
- Modern Kitchen with Integrated Appliances
- Four Large HMO Bedrooms
- White Three-Piece Bathroom
- Outdoor Seating Area





Whilst every attempt has been made to ensure the accuracy of the floor plan contained here, measurements of doors, windows, rooms and any other items are approximate and no responsibility is taken for any error, omission, or mis-statement. The measurements should not be relied upon for valuation, transaction and/or funding purposes. This plan is for illustrative purposes only and should be used as such by any prospective purchaser or tenant.





Aspire Estates

Aspire Properties, Wira Business Park Ring Road - LS16 6EB

0113 8875079

estatesales@aspirepropertygroup.co.uk

www.aspirepropertygroup.co.uk/