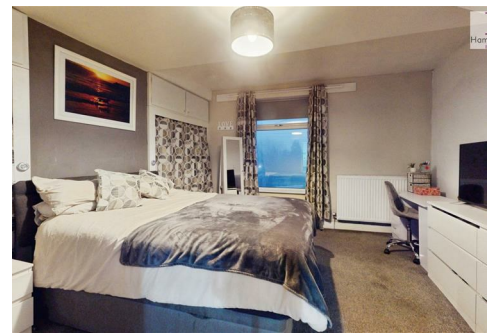




Hamilton Bower
ESTATE AGENT



8 Reevy Road, Wibsey, Bradford, BD6 1TL
Asking Price £120,000

Deceptively spacious one bedroom, with additional loft space end of terrace located in the heart of the popular village centre of Wibsey which has an excellent variety amenities, primary school and is well positioned to access the transport links connecting the nearby motorway network. Set over three floors the property briefly comprises of a lounge and kitchen to the ground floor with access to the cellar, a large double bedroom and bathroom to the first floor and a top floor attic room. Externally there are gardens to both front and rear.

EPC RATING - E

COUNCIL TAX BAND - A

GROUND FLOOR

LOUNGE

Large main reception space with feature panelling to one wall, a double glazed window, central heating radiator and laminate flooring.

KITCHEN

Fitted wall and base units to three sides with a contrasting work surface over incorporating a stainless steel sink and mixer tap. Integrated appliances include a fridge, freezer and an electric oven with gas hob and extractor fan over. Laminate flooring, a central heating radiator, double glazed window and door to the rear elevation.

LOWER GROUND FLOOR

CELLAR

Useful storage space.

FIRST FLOOR

LANDING

Double glazed window and a central heating radiator.

BEDROOM

A very large double bedroom with fitted cupboards providing ample storage options. Double glazed window and a central heating radiator.

BATHROOM

Modern and stylish fitted three piece bathroom suite in white comprising of a low flush wc, hand wash basin and bath with shower and screen over. The space doubles as a laundry room with plumbing and space for a washing machine and dryer. Vinyl flooring, a double glazed window and a central heating radiator.

SECOND FLOOR

ATTIC ROOM

To the top floor with a central heating radiator, a Velux window and eaves storage.

EXTERNAL

Paved and enclosed garden to the rear which could also be used for off road parking. Further garden space to the front.

