



Goostrey
Mill Stream Close

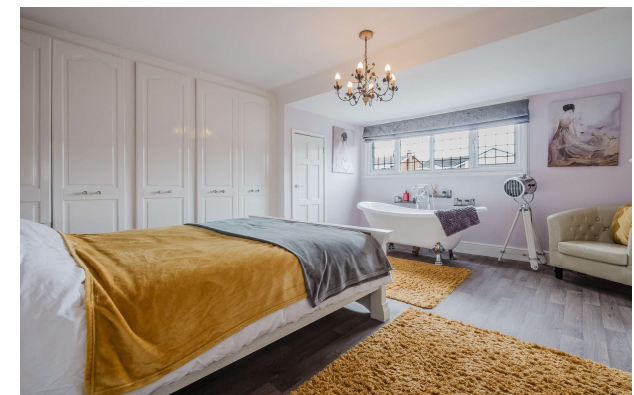

IRLAMS
of Knutsford



Goostrey, CW4 8JG

Mill Stream Close

£585,000



The Property

This beautifully presented four-bedroom, two bathroom detached family home has been sympathetically improved and maintained over the years by the current owner to now provide light and spacious accommodation over two floors. Particular mention must be made of the generous living room with brick built open fire, the separate dining room open to the modern breakfast kitchen fitted with integrated appliances, the principal bedroom with free standing roll-top bath as well as the private rear garden complete with purpose-built pizza oven. Located in a quiet and peaceful cul-de-sac in the heart of Goostrey Village, the property is just a short walk to all local amenities and is ideally positioned for all major network links to the Northwest and beyond.

The property is approached over a lovely block paved driveway, providing more than ample parking, leading to the front entrance and integral garage with electric roller door, flanked by open lawned gardens.

The rear gardens are a lovely feature of the property, being generous in proportions with a private aspect.

Laid to lawn in the main all fully enclosed by woodlap fencing. A flagged patio area sweeps around the rear of the property and provides ideal opportunity for alfresco dining and enjoying the stunning aspect.

Directions

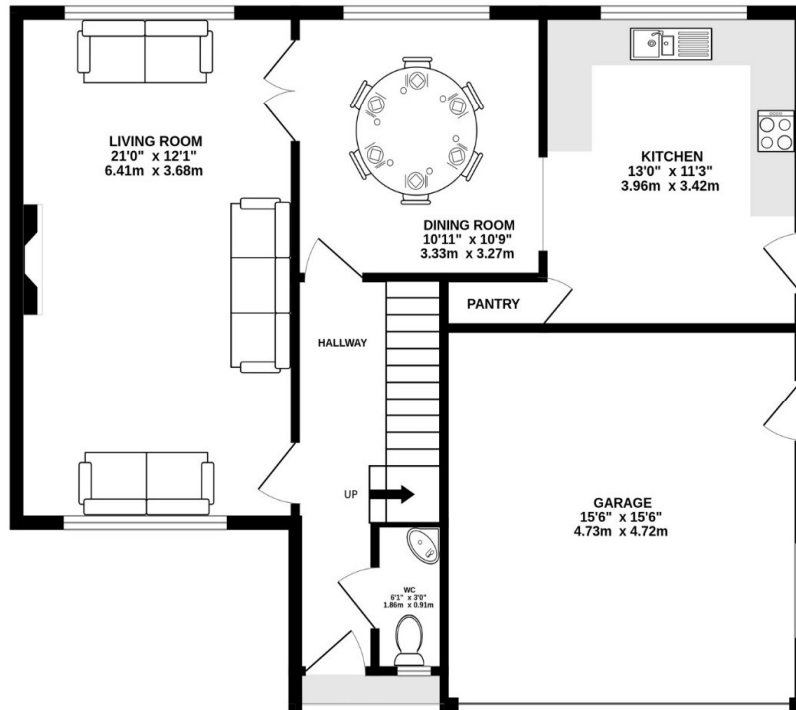
From Knutsford Town Centre proceed along Toft Road (A50) for approx. 4 miles. Just prior to Mangoletsi Garage turn left into Main Road. After 0.5 mile turn left into Buckbean Way. Turn right onto Woodlands Drive and then left into Mill Stream Close where the property will soon be seen.

- Beautifully presented detached property situated in a lovely location
- Spacious & flexible living accommodation
- Downstairs WC
- Modern kitchen with integrated appliances
- Four generous bedrooms
- Two bathrooms (one en-suite)
- Private, enclosed garden
- Driveway providing ample off road parking
- Double garage

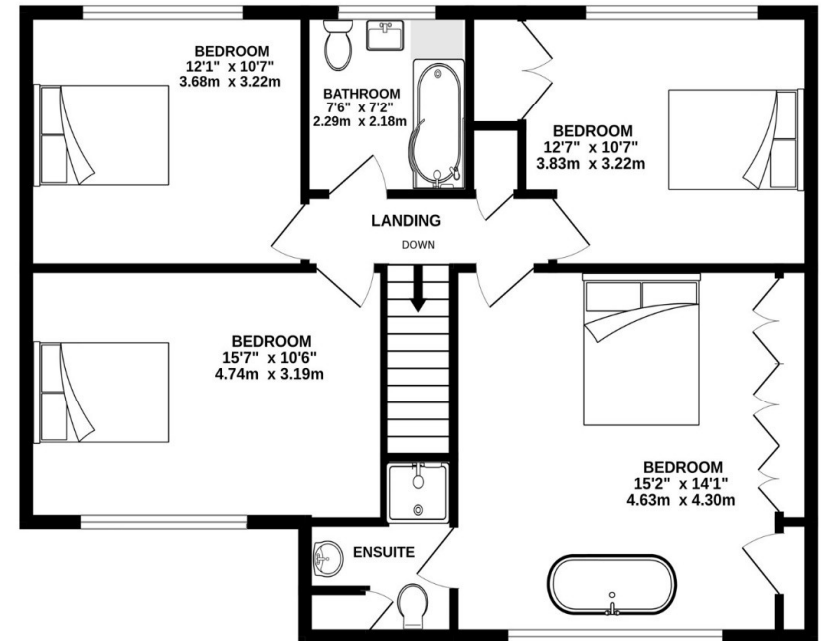
Postcode – CW4 8JG
Tenure – Freehold
Local Authority – Cheshire East
Council Tax – Band F
EPC - D



GROUND FLOOR
877 sq.ft. (81.4 sq.m.) approx.



1ST FLOOR
819 sq.ft. (76.1 sq.m.) approx.



TOTAL FLOOR AREA : 1696 sq.ft. (157.6 sq.m.) approx.

Whilst every attempt has been made to ensure the accuracy of the floorplan contained here, measurements of doors, windows, rooms and any other items are approximate and no responsibility is taken for any error, omission or mis-statement. This plan is for illustrative purposes only and should be used as such by any prospective purchaser. The services, systems and appliances shown have not been tested and no guarantee as to their operability or efficiency can be given.
Made with Metropix ©2026

103 King Street, Knutsford, Cheshire, WA16 6EQ

01565 654 000

E: info@irlamsestateagents.co.uk

www.irlamsestateagents.co.uk

I1021_ Printed by Ravensworth 01670 713330

Irlams (Estate Agents) Ltd for themselves and for the vendors or lessors of this property whose agents they are give notice that:

- (a) The particulars are set out as a general outline only for the guidance of intending purchasers or lessees, and do not constitute, nor constitute part of, an offer or contract;
- (b) All descriptions, dimensions, references to condition and necessary permissions for use and occupation, and other details are given in good faith and are believed to be correct but any intending purchasers or lessees should not rely on them as statements or representations of fact, but must satisfy themselves by inspection or otherwise as to the correctness of each of them;
- (c) No person in the employment of Irlams (Estate Agents) Ltd has any authority to make or give any representation or warranty whatsoever in relation to this property.
- (d) We believe the information above to be accurate at the point it was obtained however you may wish to make a final check with your Solicitor or with us in respect of anything above you feel crucial before you proceed with the purchase of this property.

