

**sansome
& george**

SANSOME
& GEORGE



Lynbrook House Monk Sherborne Road, Charter Alley

Guide Price £775,000

Sansome & George - Nestled in Charter Alley, this modern 4 Bedroom detached house offers a perfect blend of charm and contemporary style. Boasting a generous 1,469 sq ft of living space. The inviting atmosphere of the house is complemented by a garden, perfect for outdoor entertaining or simply relaxing in the sunshine.

With the convenience of off-street parking and a garage, this property offers both comfort and practicality. Whether you're looking for a peaceful retreat or a welcoming family home, this property ticks all the boxes. Don't miss the opportunity to make this charming house your own and enjoy the idyllic village lifestyle it offers. Contact us today to arrange a viewing and discover the endless possibilities this property has to offer.

These particulars are a general guide only. They do not form part of any contract. Services, systems and appliances have not been tested. Please note that all buyers attend property viewings at their own risk and must assess any hazards themselves. The title is currently under review for any potential covenants or restrictions and will be available upon request shortly.

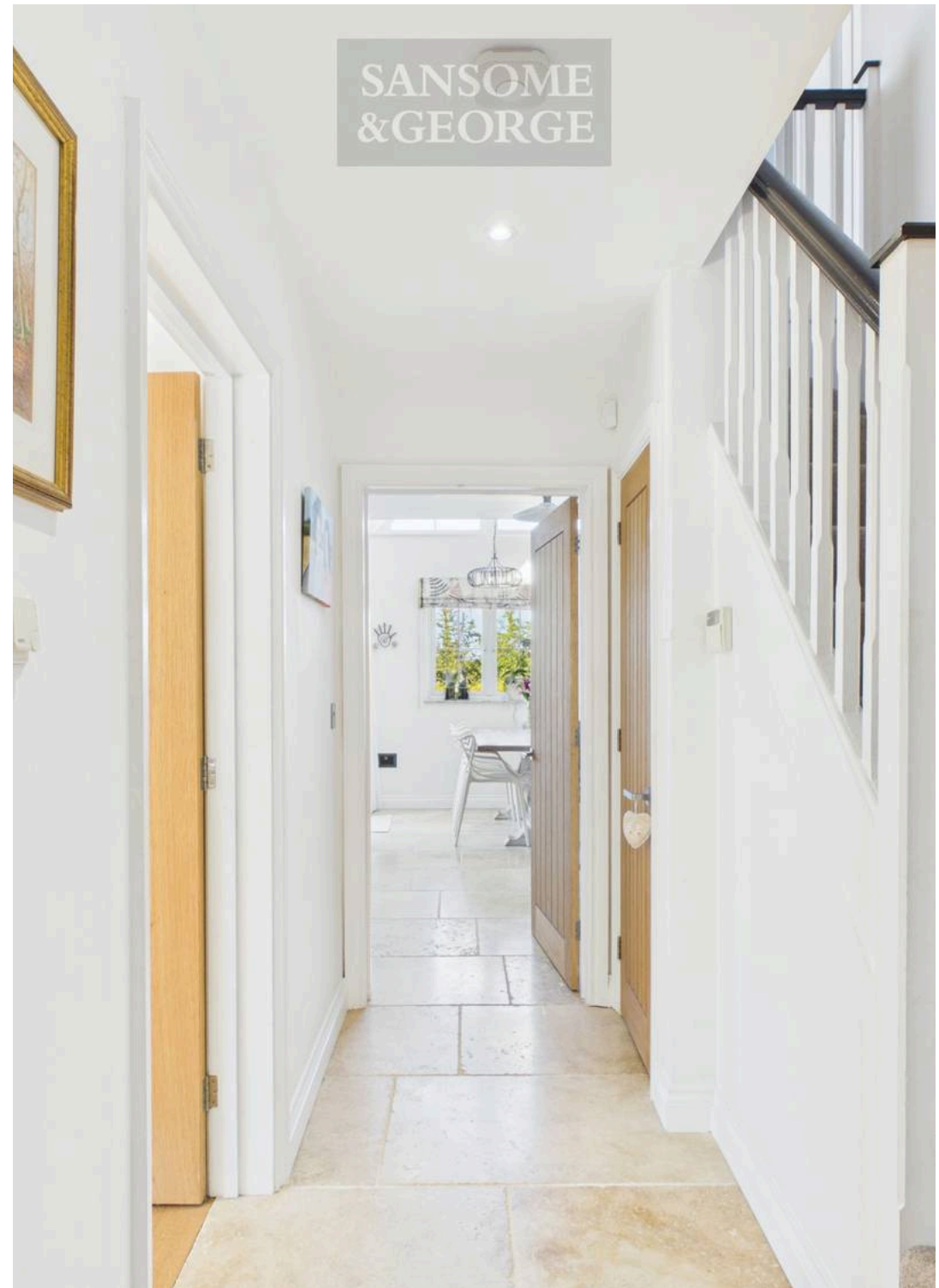
Council Tax band: E

Local Authority - Basingstoke & Deane

Tenure: Freehold

EPC Energy Efficiency Rating: C

EPC Environmental Impact Rating:



SANSOME
&GEORGE



SANSOME
&GEORGE



SANSOME
&GEORGE



SANSOME
&GEORGE



SANSOME
& GEORGE

Lynbrook House Monk Sherborne Road

Charter Alley, Tadley

- Spacious landscaped garden
- Patio area for alfresco dining
- French doors to garden
- Modern kitchen with integrated appliances
- Attached garage
- Driveway parking
- Modern bathrooms with walk-in shower
- Modern fireplaces



sansome
& george

SANSOME
&GEORGE



SANSOME
&GEORGE



SANSOME
&GEORGE



SANSOME
&GEORGE





Floor 0



Floor 1



Approximate total area⁽¹⁾
1469 ft²

Reduced headroom
2 ft²

(1) Excluding balconies and terraces

Reduced headroom
..... Below 5 ft

Calculations reference the RICS IPMS 3C standard. Measurements are approximate and not to scale. This floor plan is intended for illustration only.

GIRAFFE360

SANSOME
&GEORGE



SANSOME
&GEORGE

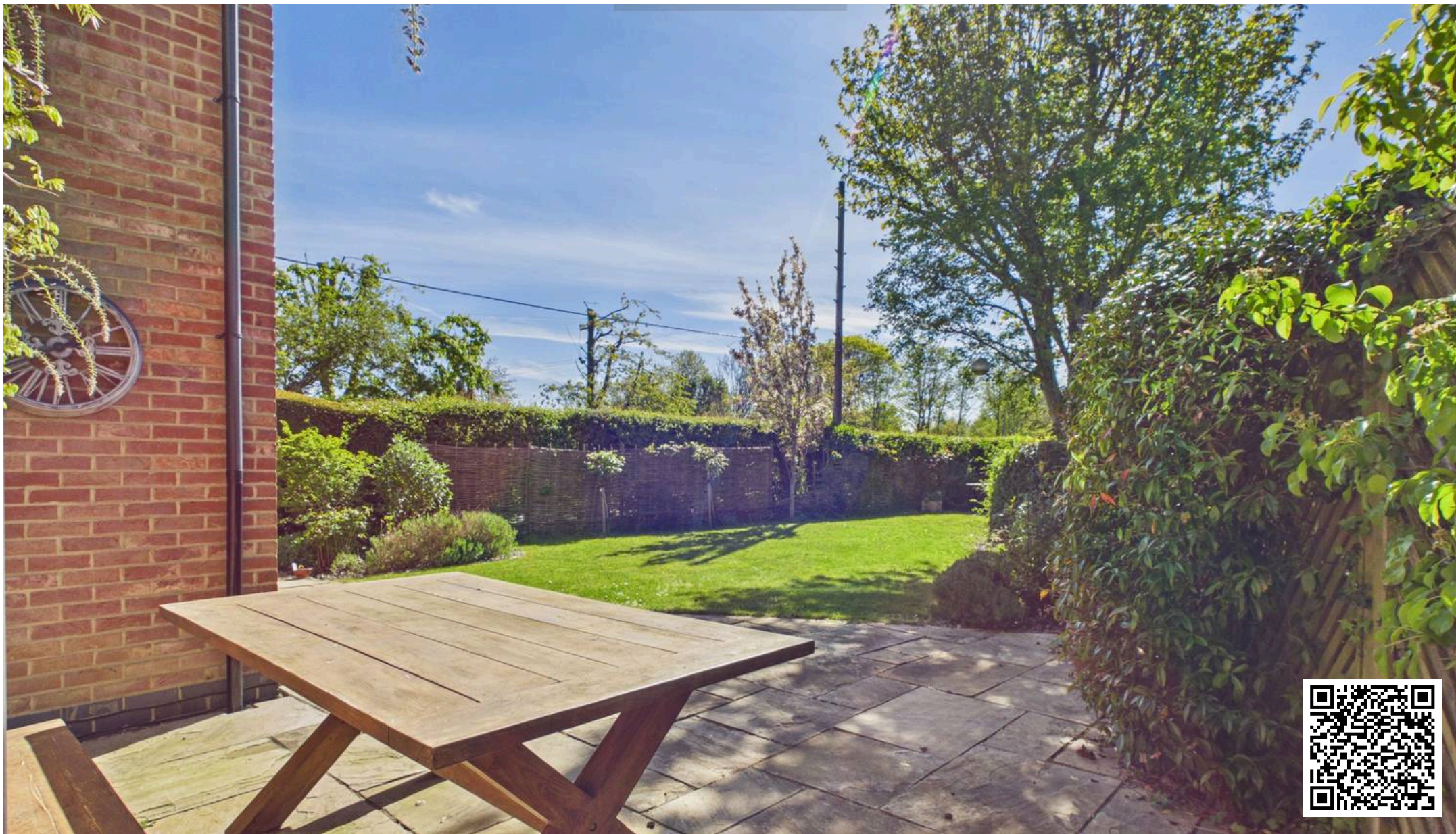


SANSOME
&GEORGE



SANSOME
&GEORGE





Sansome & George Bramley Office

Sherfield Road, Bramley, Tadley - RG26 5AG

01256 882979 • • www.sansomeandgeorge.co.uk/

Disclaimer: Every attempt has been made to ensure accuracy, however these property particulars are approximate and for illustrative purposes only. They have been prepared in good faith and they are not intended to constitute part of an offer of contract. We have not carried out a structural survey and the services, appliances and specific fittings have not been tested. All photographs, measurements, floor plans and distances referred to are given as a guide only