



CHATTERTON | REES



646 Fulham Road

, London, SW6 5RT

£700,000



646 Fulham Road



Description

A stunning first-floor, two-bedroom flat set within a handsome period property in the heart of Parsons Green, Fulham. Positioned on the corner of Radipole Road, the current owner purchased and completely renovated the apartment to an exceptional standard, with high-quality fixtures and fittings throughout.

The property features a large bay-fronted reception room, a well-proportioned eat-in kitchen, a generous principal bedroom with built-in storage, and a second bedroom, also benefiting from built-in storage.

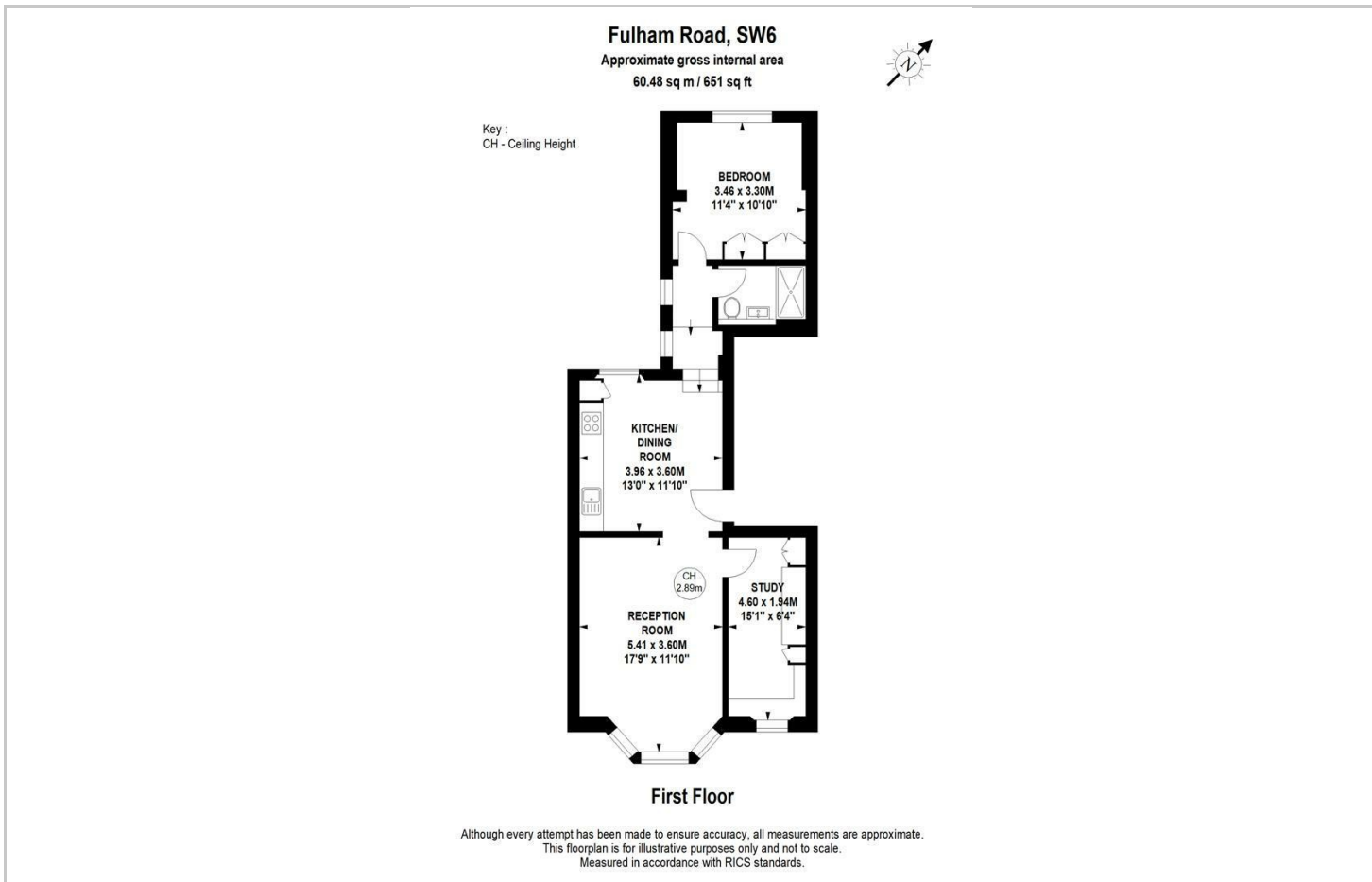
Sold with a long lease and a share of the freehold, the flat is ideally located just a short distance from Parsons Green itself, with an excellent selection of shops, cafés, and restaurants right on your doorstep.

- First Floor
- Bay Reception
- Share of Freehold
- Two Bedrooms
- Very good finish throughout
- Close to Parsons Green





Floor Plan



Area Map



Viewing

Please contact our Chatterton Rees Office on 020 3780 0580 if you wish to arrange a viewing appointment for this property or require further information.

These particulars, whilst believed to be accurate are set out as a general outline only for guidance and do not constitute any part of an offer or contract. Intending purchasers should not rely on them as statements of representation of fact, but must satisfy themselves by inspection or otherwise as to their accuracy. No person in this firm's employment has the authority to make or give any representation or warranty in respect of the property.

Energy Efficiency Graph

Energy Efficiency Rating		Current	Potential
Very energy efficient - lower running costs			
(92 plus) A			
(81-91) B			
(69-80) C			
(55-68) D			
(39-54) E			
(21-38) F			
(1-20) G			
Not energy efficient - higher running costs			
England & Wales		EU Directive 2002/91/EC	
Environmental Impact (CO ₂) Rating		Current	Potential
Very environmentally friendly - lower CO ₂ emissions			
(92 plus) A			
(81-91) B			
(69-80) C			
(55-68) D			
(39-54) E			
(21-38) F			
(1-20) G			
Not environmentally friendly - higher CO ₂ emissions			
England & Wales		EU Directive 2002/91/EC	