



UPPER RICHMOND ROAD, SW15

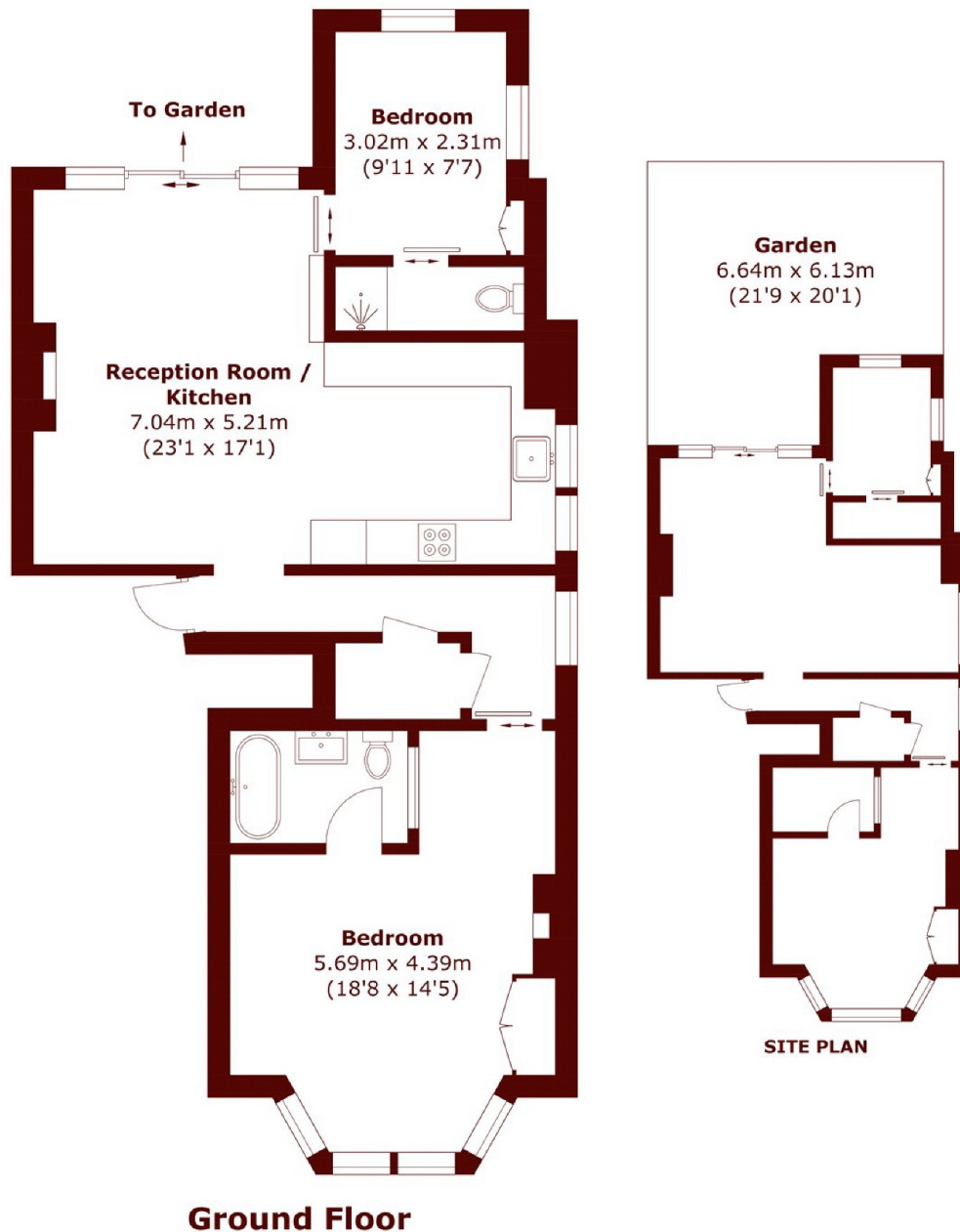
£600,000

A beautifully presented two-bedroom Edwardian ground-floor flat, full of period charm and high ceilings, with a private south-facing garden and direct access. Just moments from Barnes Station and Barnes Common, it

Two bedrooms
Edwardian conversion
Private garden

Share of freehold
Ground floor
Ample storage

STEP INSIDE UPPER RICHMOND ROAD



Total area (approx.): 71.1 sq. m (765.3 sq. ft)

Barnes & East Sheen
020 8563 8333

Energy Rating: TBC We aim to make our particulars both accurate and reliable. However, they are not guaranteed; nor do they form part of an offer or contract. If you require clarification on any points then please contact us, especially if you're traveling some distance to view. Please note that appliances and heating systems have not been tested and therefore no warranties can be given as to their good working order

**MARSH &
PARSONS**