



**2502 Twelve Trees Point, London, E16 4EF**

**£634 Per week**





Brand New two-bedroom apartment set within the sought-after Berkeley development called TwelveTrees Park. The property comprises, an open-plan reception / living space, modern integrated kitchen living area, luxury bathroom, great storage and 2 bedrooms, wardrobes and stylish furnishings. Offered Furnished and available Now. Virtual viewings also offered.

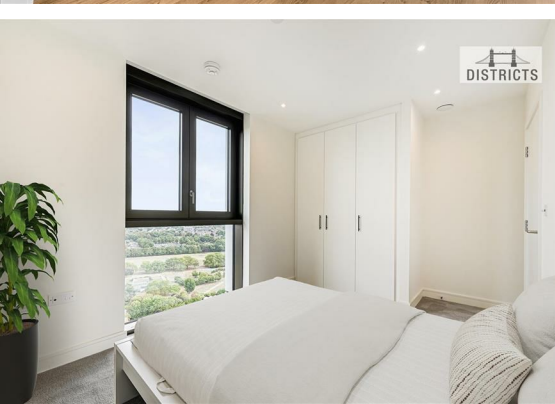
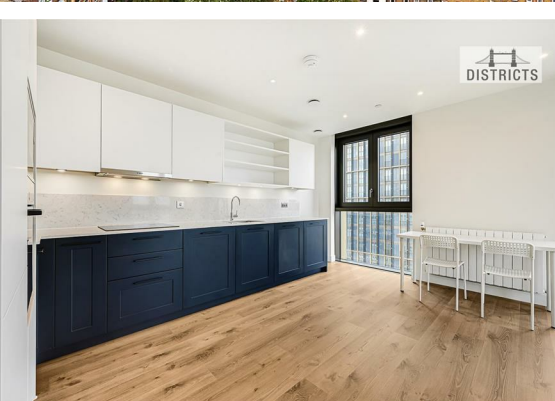
Council Tax Band: Newham - TBC New Build  
 Minimum contract: 12 months  
 Change of contract fee: £50 including VAT  
 Lift access | Cladding: EWS1 Certificate available  
 Holding Deposit - £634 (1 weeks rent, subject to agreed offer)

Electricity supply – Mains | Cold Water supply – Mains | Sewerage – Mains | Hot water & Heating – Mains | Internet: Fibre

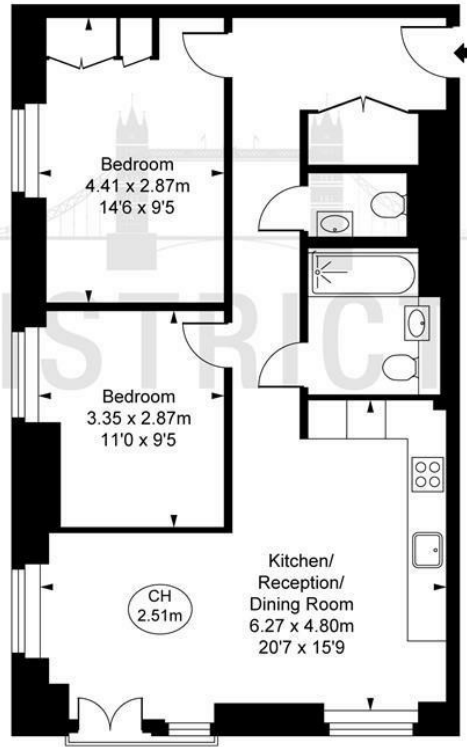
To check broadband and mobile phone coverage please visit Ofcom.  
 To check planning permission please visit Newham Council Planning & Building







Menara Point, E16  
Approximate Gross Internal Area  
66.23 sq m / 713 sq ft  
( CH = Ceiling Heights )



This plan is not to scale. It is for guidance and not for valuation purposes.  
All measurements and areas are approximate only, and have been prepared in accordance with the current edition of the RICS Code of Measuring Practice.  
© Fulham Performance

These particulars, whilst believed to be accurate are set out as a general outline only for guidance and do not constitute any part of an offer or contract. Intending purchasers should not rely on them as statements of representation of fact, but must satisfy themselves by inspection or otherwise as to their accuracy. No person in this firm's employment has the authority to make or give any representation or warranty in respect of the property.