

Highgrove Close, N11

£725,000

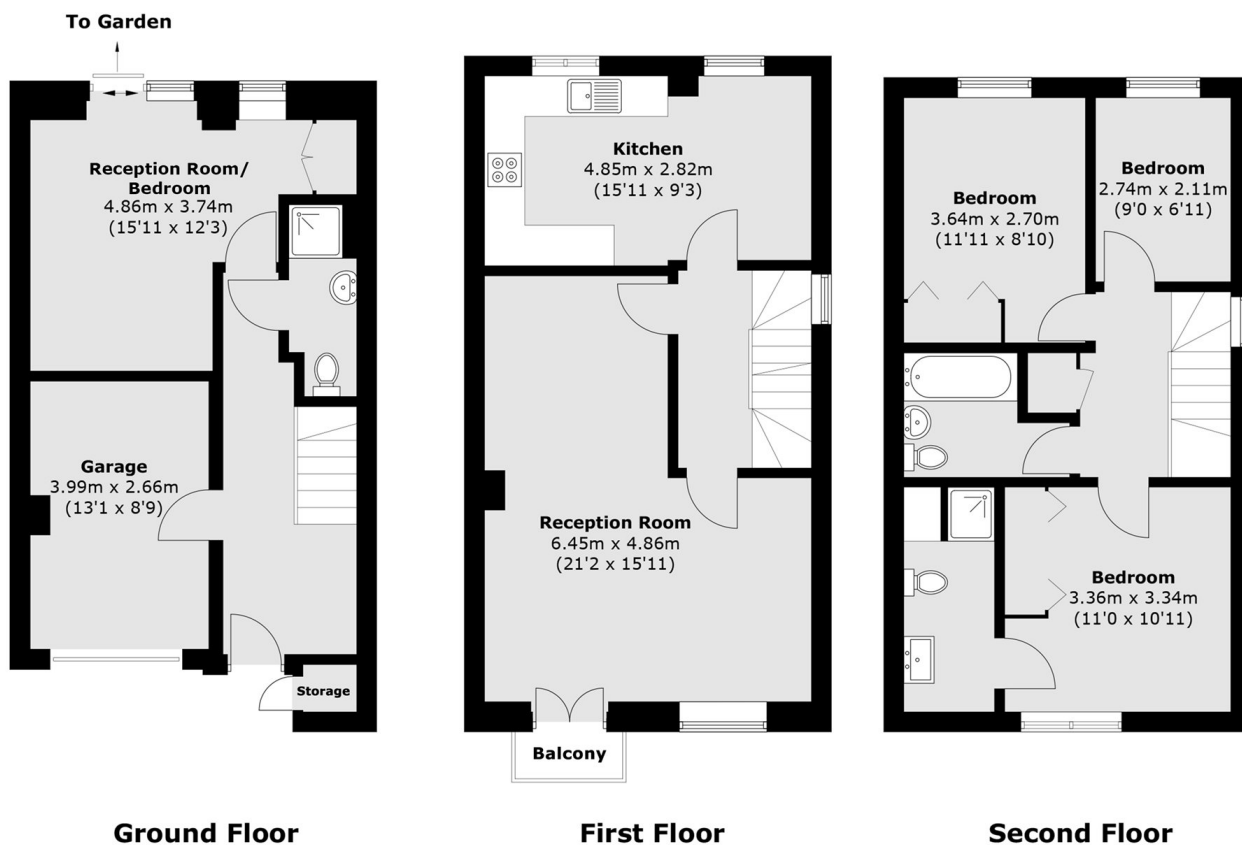
Offered on a chain-free basis is this end-of-terrace townhouse, comprising four bedrooms, three bathrooms, a garage, and an off-street parking space. This home also benefits from a large reception room and a separate eat-in kitchen area. It is double-glazed throughout and features a private rear garden.

Highgrove Close is a sought after residential location, running just off Colney Hatch Lane, providing excellent access to Muswell Hill, Friern Barnet and New Southgate, providing a lovely selection of local shops and transport links into Central London.

Features

- Four Bedrooms
- Three Bathrooms
- Off Street Parking
- End Of Terrace
- Double Glazing
- Chain Free

Highgrove Close, London, N11



Total area (approx.): 129.9 sq. m (1,398.2 sq. ft)
(Including Garage & Excluding Balcony)
Balcony area (approx.): 1.6 sq. m (17.2 sq. ft)
External Storage: 0.5 sq. m (5.3 sq. ft)