



Ralston Street
Chelsea, SW3

CHESTERTONS





A truly exceptional renovated triplex apartment featuring high ceilings and a generously proportioned double reception room

This elegant and highly desirable property is presented in good order throughout and further offers 5 bedroom suites, two guest cloakroom and a large kitchen breakfast room with ample light and storage throughout.

Ralston Street is located only moments away from Kings Road and Sloane Square providing easy access to all local amenities. River Thames and Chelsea Physic Garden are both located approximately 0.2 mile away.

- High ceilings
- Newly refurbished
- Modern
- Ample storage
- Bright
- Two guest W/C's

£12,500 pcm

Additional tenant charges apply (fees apply to non-AST tenancies only)

Tenancy Agreement Fee: £300

References per Tenant/Guarantor: £60

Inventory check (approx. £100 – £250 inc. VAT)

chestertons.co.uk/property-to-rent/applicable-fees

Energy Efficiency Rating		Current	Potential
100-109	A		
81-100	B		87
62-80	C		
43-61	D	61	
25-42	E		
10-24	F		
1-9	G		

Not energy efficient - higher running costs

England, Scotland & Wales EU Directive 2002/91/EC

Minimum Term: 12 months
Deposit Required: Six weeks
Local Authority: Kensington and Chelsea
Council Tax Band: H
EPC Rating: D
Unfurnished

Chestertons Chelsea Lettings

17 Cale Street

London

SW3 3QR

chelsealettingsusers@chestertons.co.uk

02075944750

chestertons.co.uk

Ralston Street, SW3

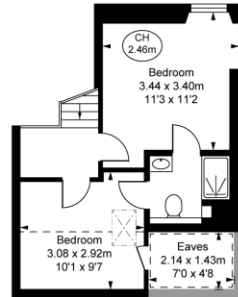
Approximate Gross Internal Area
198.27 sq m / 2,134 sq ft

Eaves
3.06 sq m / 33 sq ft

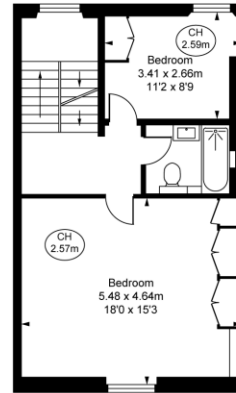
Total Areas Shown On Plan
201.33 sq m / 2,167 sq ft

(Including restricted height
under 1.5m \square \square \square \square \square)

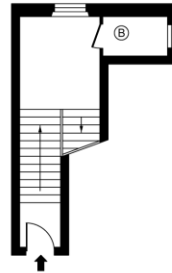
(CH = Ceiling Heights)



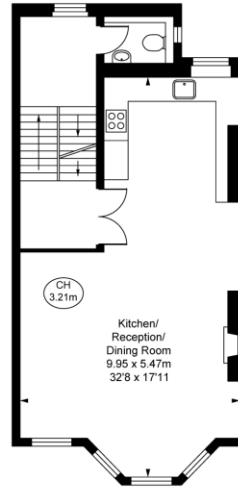
Fourth Floor
Approximate Gross Internal Area
27.19 sq m / 293 sq ft



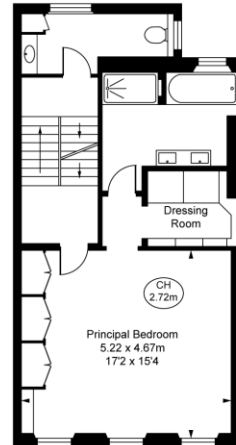
Third Floor
Approximate Gross Internal Area
49.70 sq m / 535 sq ft



Ground Floor
Approximate Gross Internal Area
10.75 sq m / 116 sq ft



First Floor
Approximate Gross Internal Area
57.08 sq m / 614 sq ft



Second Floor
Approximate Gross Internal Area
53.55 sq m / 576 sq ft

This plan is not to scale. It is for guidance and not for valuation purposes.
All measurements and areas are approximate only, and have been prepared in accordance with the current edition of the RICS Code of Measuring Practice.
© Crown Copyright

Chesterton UK Services Limited trading as Chestertons for themselves and for the vendor of this property whose agents they are, give notice that (i) these particulars do not constitute any part of an offer or contract, (ii) all statements contained within these particulars are made without responsibility on the part of Chestertons or the vendor, (iii) whilst made in good faith, none of the statements contained within these particulars are to be relied upon as a statement or representation of fact, (iv) any intending purchasers must satisfy themselves by inspection or otherwise as to the correctness of each of the statements contained within these particulars, (v) the vendor does not make or give either Chestertons or any person in their employment any authority to make or give representation or warranty whatsoever in relation to this property. Wide angle lenses may be used. ©Copyright Chestertons | Chesterton Global Ltd | Registered Office 40 Connaught Street, Hyde Park, London W2 2AB Registered Company Number 05334580.



This paper is
100% recyclable