



Glendale Crescent, Belmont, Ayr, KA7 3SE

Offers Over £60,000

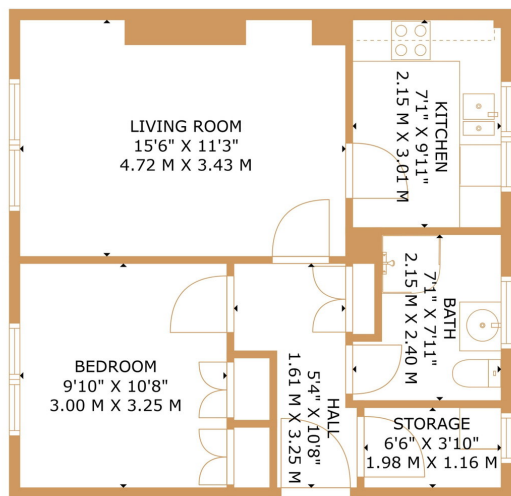
🛏 1 🚿 1 🚗 1



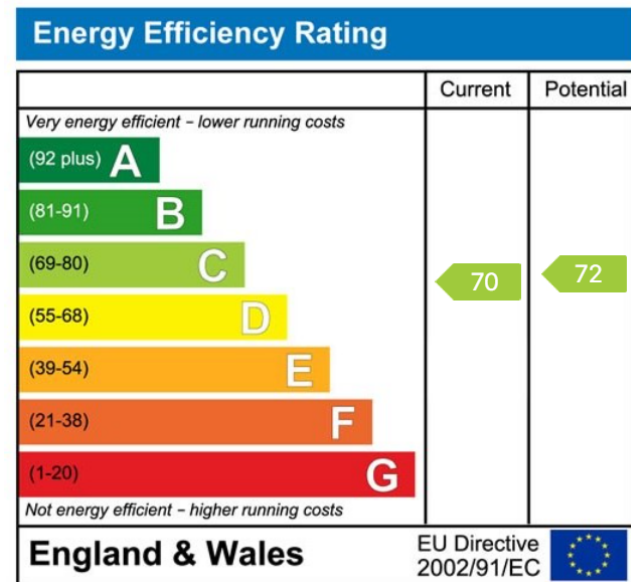
- Popular location
- Seldom available
- Ideal first time buyer or buy to let property
- EPC Rating Band C
- 1 bedroom ground floor flat
- Driveway to front
- Close to Belmont Academy
- Council Tax Band A



1-bed ground floor flat in Ayr. Council Tax Band A, EPC Band C. Driveway, enclosed front garden and rear garden. Suits first-time buyers and buy-to-let. Viewing recommended.



TOTAL: 474 sq. ft, 44 m²
 FLOOR 1: 474 sq. ft, 44 m²
 EXCLUDED AREAS: STORAGE: 25 sq. ft, 2 m²; UNDEFINED: 10 sq. ft, 1 m²
 SIZES AND DIMENSIONS ARE APPROXIMATE. ACTUAL MAY VARY. © FOUR WALLS MEDIA



01292 437 045
 office@belmontproperty.com
 24 Dalmellington Road, Ayr, KA7 2PZ

belmontproperty.com

Agents Note: Whilst every care has been taken to prepare these sales particulars, they are for guidance purposes only. All measurements are approximate and for general guidance purposes only and whilst every care has been taken to ensure their accuracy, they should not be relied upon and potential buyers are advised to recheck the measurements