



Packington Square, London N1

Price £650 per week - Furnished







Description

Offered furnished or unfurnished this 1 bedroom apartment available in Packington Square is moments from the Regents Canal and ideally situated for Angel and Islington, N1.

This stunning 1 bedroom apartment is situated on the 5th floor. Boasting approximately 505 sq. ft of living space, the property comprises 1 double bedroom with fitted wardrobes, open plan reception area with access to large private balcony facing the landscaped courtyard, fully fitted kitchen with integrated Siemens appliances, contemporary bathroom with porcelain finish, and wood flooring.

Packington Square is perfectly located in the heart of Angel, Islington. The Regents Canal is moments away and Upper Street is just 0.3 miles from the development. Angel station, Zone 1 is 0.7 miles away.

We understand that cooling / heating is delivered via a communal system for which separate charges apply.

Council tax band: D. Rent is payable on a monthly basis and you may be required to pay more than a month's rent in advance, depending on your circumstances. You will be required to pay a 1 week holding deposit following a successful offer. Tenancies with annual rents up to £50,000 will require a 5 weeks' security deposit, while those exceeding this threshold will require a 6 weeks' deposit. Utility bills, council tax, telephone line and broadband are not included in the rent. As well as paying the rent, you may also be required to make some additional permitted payments. If your tenancy does not qualify as an AST, additional fees may apply. Please visit jll.co.uk/fees for details of fees that may be payable when renting a property. To check broadband and mobile phone coverage please visit Ofcom here ofcom.org.uk/phones-telecoms-and-internet/advice-for-consumers/advice/ofcom-checker

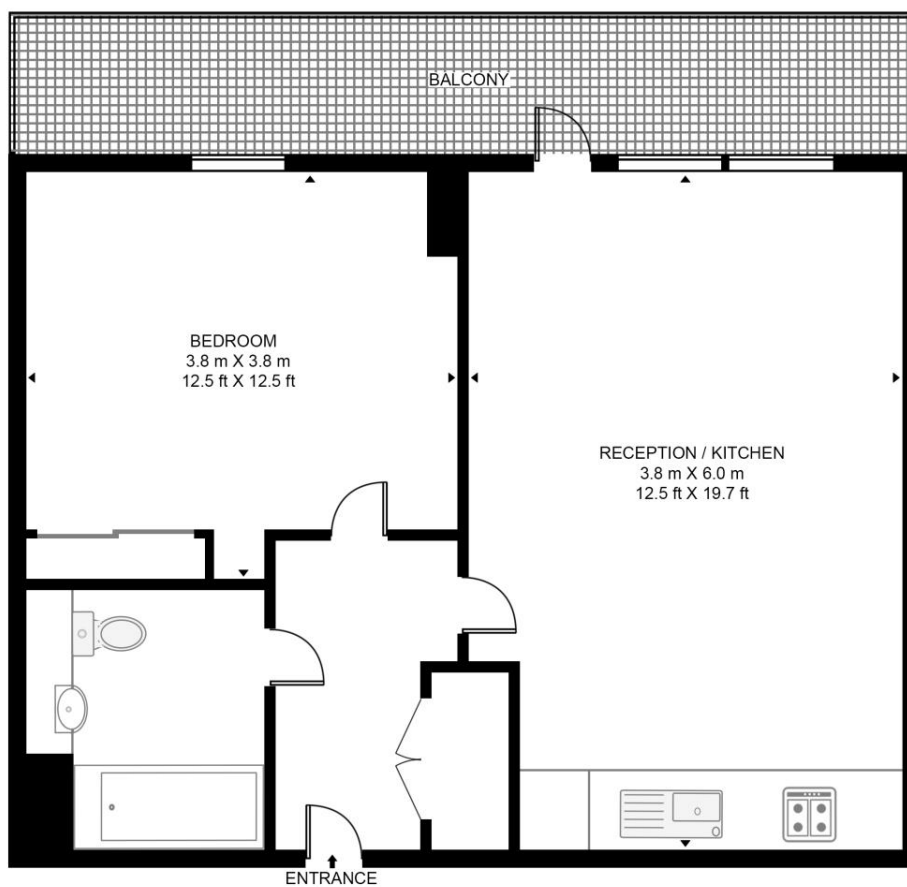
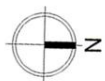
- 1 Bedroom
- 1 Bathroom
- Large Private balcony
- Fully fitted kitchen with Siemens appliances
- Wood flooring
- 0.7 miles away from Angel Station
- Approx. 505 sq ft (46.9 sq m)
- Unfurnished / Furnished
- EPC: B
- Council tax: Band D

Floorplan

505 sq ft | 47 sq m

PACKINGTON SQUARE

APPROXIMATE GROSS INTERNAL FLOOR AREA 505 SQ.FT (46.9 SQ.M)



FIFTH FLOOR

HDVA

This floor plan has been defined by the RICS Code of Measurement. This floor plan and all others are for approximate representative purposes only and upon usage is agreed to as such by the client.

WWW: hdvirtualart.com | TEL: 0203.974.1567 | EMAIL: info@hdvirtualart.com

City
25 Walbrook The Walbrook
Building,
London EC4N 8AF
+4420 7337 4000

Urban living, your way.

jll.co.uk/residential

© 2019 Jones Lang LaSalle IP, Inc. All rights reserved. All information contained herein is from sources deemed reliable; however, no representation or warranty is made to the accuracy thereof.

