



## Charles Street, W1J

£3,250 Per calendar month

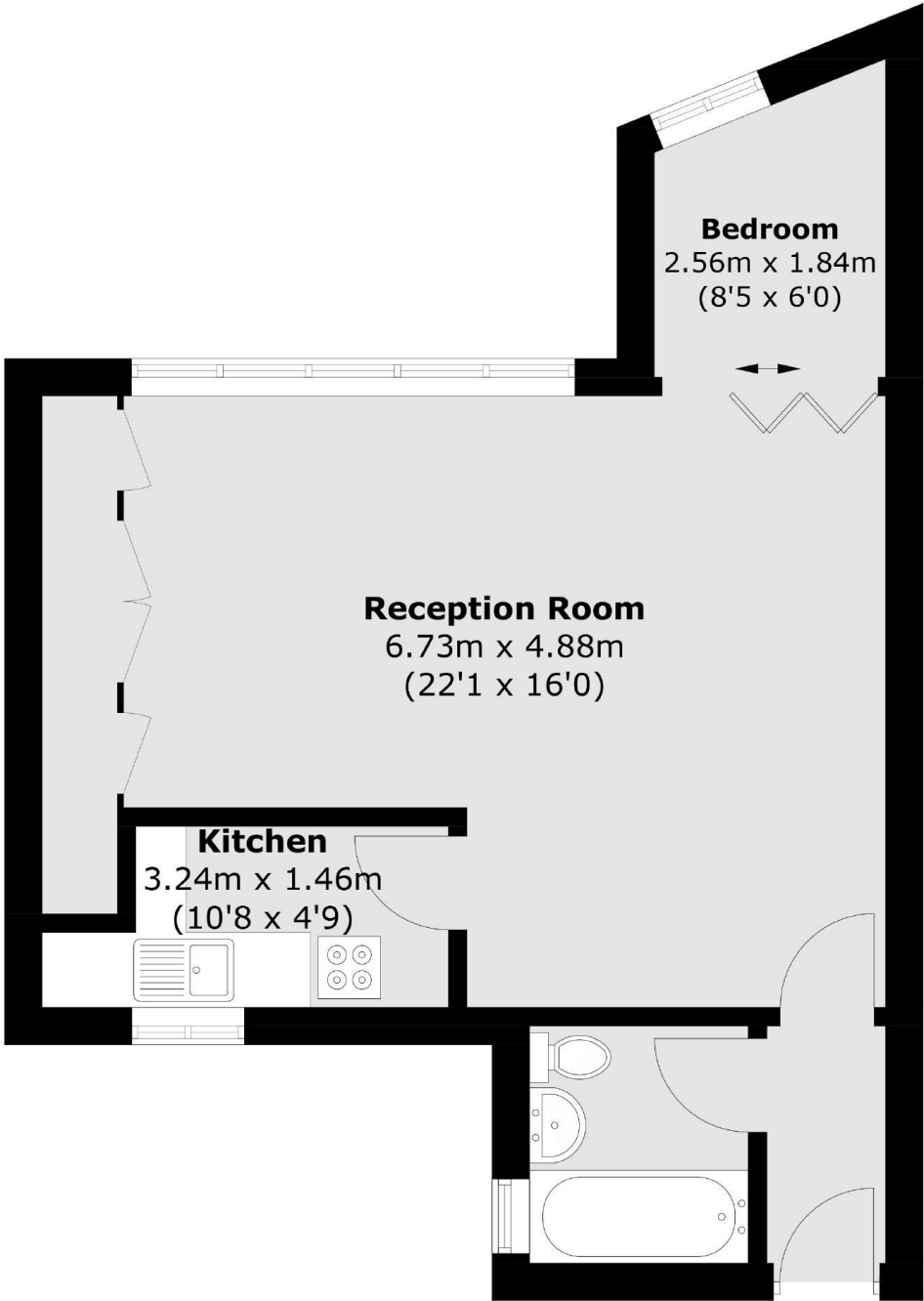
A bright and spacious studio apartment located in this beautiful period building within walking distance to Berkeley Square and Green Park Underground station.

Set in the heart of peaceful Mayfair Village this magnificent property is only a few streets away from some of the world's finest restaurants and luxury retail destinations.

### Features

Well-Appointed Studio  
Grade II Listed Building  
New Bathroom  
High Ceilings  
Excellent Location  
Furnished

Charles Street,  
London, W1J



Total area (approx.): 43.3 sq. m (466.1 sq. ft)



Wetherell  
102 Mount Street  
London  
W1K 2TH  
Lettings  
020 7529 5588

Energy Rating: D. We aim to make our particulars both accurate and reliable. However they are not guaranteed; nor do they form part of an offer or contract. If you require clarification on any points then please contact us, especially if you're traveling some distance to view. Please note that appliances and heating systems have not been tested and therefore no warranties can be given as to their good working order.



dexters.co.uk