



Connells

Warren Mead
Thame



Property Description

This beautifully presented two-bedroom, one-bathroom end-terraced home in Warren Mead, Thame offers comfort, convenience and modern living. It includes allocated parking and a private rear garden, creating a peaceful space for relaxing or entertaining. Inside, the light, well-laid-out accommodation suits first-time buyers, downsizers or small families. Shared ownership is available from 40% to 100%, offering flexibility and affordability.

Thame is well regarded for education, with strong local primary options including John Hampden, Barley Hill, St Joseph's Catholic and Tetsworth Primary Schools, all rated Good with above-average outcomes. Families also benefit from proximity to the highly regarded Lord Williams's School, known for excellent GCSE and A-level performance, with a catchment that includes Thame and nearby villages such as Aston Rowant, Chinnor, Tetsworth, Brill and Long Crendon.

Beyond schooling, Thame provides a welcoming community, vibrant high street, independent shops, cafés, markets, parks and excellent transport links to Oxford, Aylesbury and London via Haddenham & Thame Parkway. This charming home offers practicality, comfort and a superb location in one of Oxfordshire's most desirable market towns.

The setting additionally benefits from a calm neighbourhood atmosphere, with leafy surroundings and pleasant footpaths that enhance the overall appeal of daily living for residents seeking both tranquillity and convenience in equal measure.

This beautifully presented two-bedroom, one-bathroom end-terraced home in Warren Mead, Thame offers comfort, convenience and modern living. It includes allocated parking

and a private rear garden, creating a peaceful space for relaxing or entertaining. Inside, the light, well-laid-out accommodation suits first-time buyers, downsizers or small families. Shared ownership is available from 40% to 100%, offering flexibility and affordability.

Thame is well regarded for education, with strong local primary options including John Hampden, Barley Hill, St Joseph's Catholic and Tetsworth Primary Schools, all rated Good with above-average outcomes. Families also benefit from proximity to the highly regarded Lord Williams's School, known for excellent GCSE and A-level performance, with a catchment that includes Thame and nearby villages such as Aston Rowant, Chinnor, Tetsworth, Brill and Long Crendon.

Beyond schooling, Thame provides a welcoming community, vibrant high street, independent shops, cafés, markets, parks and excellent transport links to Oxford, Aylesbury and London via Haddenham & Thame Parkway. This charming home offers practicality, comfort and a superb location in one of Oxfordshire's most desirable market towns.

The setting additionally benefits from a calm neighbourhood atmosphere, with leafy surroundings and pleasant footpaths that enhance the overall appeal of daily living for residents

seeking both tranquillity and convenience in equal measure.

This beautifully presented two-bedroom, one-bathroom end-terraced home in Warren Mead, Thame offers comfort, convenience and modern living. It includes allocated parking and a private rear garden, creating a peaceful space for relaxing or entertaining. Inside, the light, well-laid-out accommodation suits first-time buyers, downsizers or small families. Shared ownership is available from 40% to 100%, offering flexibility and affordability.

Thame is well regarded for education, with strong local primary options including John Hampden, Barley Hill, St Joseph's Catholic and Tetsworth Primary Schools, all rated Good with above-average outcomes. Families also benefit from proximity to the highly regarded Lord Williams's School, known for excellent GCSE and A-level performance, with a catchment that includes Thame and nearby villages such as Aston Rowant, Chinnor, Tetsworth, Brill and Long Crendon.

Beyond schooling, Thame provides a welcoming community, vibrant high street, independent shops, cafés, markets, parks and excellent transport links to Oxford, Aylesbury and London via Haddenham &

Thame Parkway. This charming home offers practicality, comfort and a superb location in one of Oxfordshire's most desirable market towns.

The setting additionally benefits from a calm neighbourhood atmosphere, with leafy surroundings and pleasant footpaths that enhance the overall appeal of daily living for residents seeking both tranquillity and convenience in equal measure.

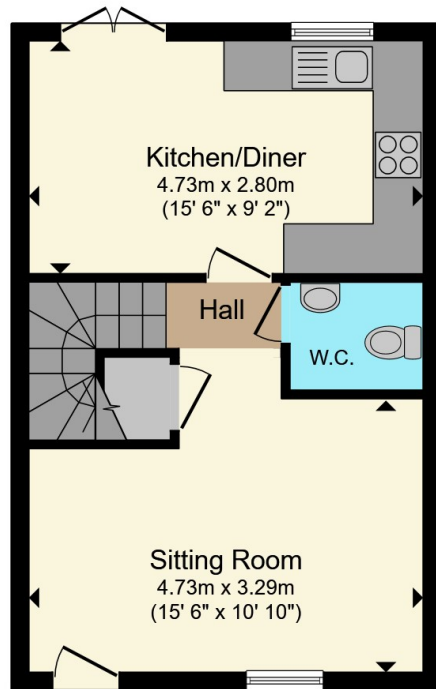
This beautifully presented two-bedroom, one-bathroom end-terraced home in Warren Mead, Thame offers comfort, convenience and modern living. It includes allocated parking and a private rear garden, creating a peaceful space for relaxing or entertaining. Inside, the light, well-laid-out accommodation suits first-time buyers, downsizers or small families. Shared ownership is available from 40% to 100%, offering flexibility and affordability.

Thame is well regarded for education, with strong local primary options including John Hampden, Barley Hill, St Joseph's Catholic and Tetsworth Primary Schools, all rated Good with above-average outcomes. Families also benefit from proximity to the highly regarded Lord Williams's School, known for excellent GCSE and A-level performance, with a catchment that includes Thame and nearby villages such as Aston Rowant, Chinnor, Tetsworth, Brill and Long Crendon.

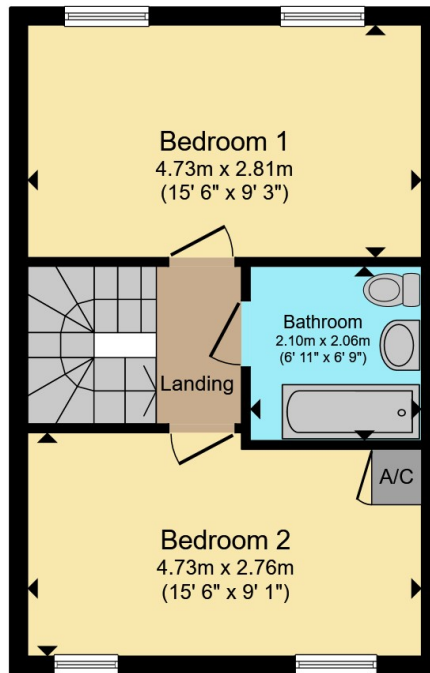
Beyond schooling, Thame provides a welcoming community, vibrant high street, independent shops, cafés, markets, parks and excellent transport links to Oxford, Aylesbury and London via Haddenham & Thame Parkway. This charming home offers practicality, comfort and a superb location in one of Oxfordshire's most desirable market towns.

The setting additionally benefits from a calm neighbourhood atmosphere, with leafy surroundings and pleasant footpaths that enhance the overall appeal of daily living for residents seeking both tranquillity and convenience in equal measure.





Ground Floor



First Floor

Total floor area 71.8 m² (773 sq.ft.) approx

This floor plan is for illustrative purposes only. It is not drawn to scale. Any measurements, floor areas (including any total floor area), openings and orientation are approximate. No details are guaranteed, they cannot be relied upon for any purpose and they do not form part of any agreement. No liability is taken for any error, omission or misstatement. A party must rely upon its own inspection(s). Powered by www.propertybox.io



To view this property please contact Connells on

T 01865 748 448
E cowley@connells.co.uk

60 Between Towns Road
 OXFORD OX4 3LR

EPC Rating: B Council Tax Band: C

Service Charge: 631.20 Ground Rent: Ask Agent

Tenure: Leasehold

view this property online connells.co.uk/Property/THM307268

This is a Leasehold property with details as follows; Term of Lease 125 years from 01 Apr 2017. Should you require further information please contact the branch. Please Note additional fees could be incurred for items such as Leasehold packs.



1. MONEY LAUNDERING REGULATIONS Intending purchasers will be asked to produce identification documentation at a later stage and we would ask for your co-operation in order that there will be no delay in agreeing the sale. 2. These particulars do not constitute part or all of an offer or contract. 3. The measurements indicated are supplied for guidance only and as such must be considered incorrect. Potential buyers are advised to recheck measurements before committing to any expense. 4. We have not tested any apparatus, equipment, fixtures, fittings or services and it is in the buyers interest to check the working condition of any appliances.

Connells Residential is registered in England and Wales under company number 1489613, Registered Office is Cumbria House, 16-20 Hockliffe Street, Leighton Buzzard, Bedfordshire, LU7 1GN. VAT Registration Number is 500 2481 05.

See all our properties at www.connells.co.uk | www.rightmove.co.uk | www.zoopla.co.uk

Property Ref: THM307268 - 0009