



# Omega Building

Smugglers Way, SW18

£1,650 pcm

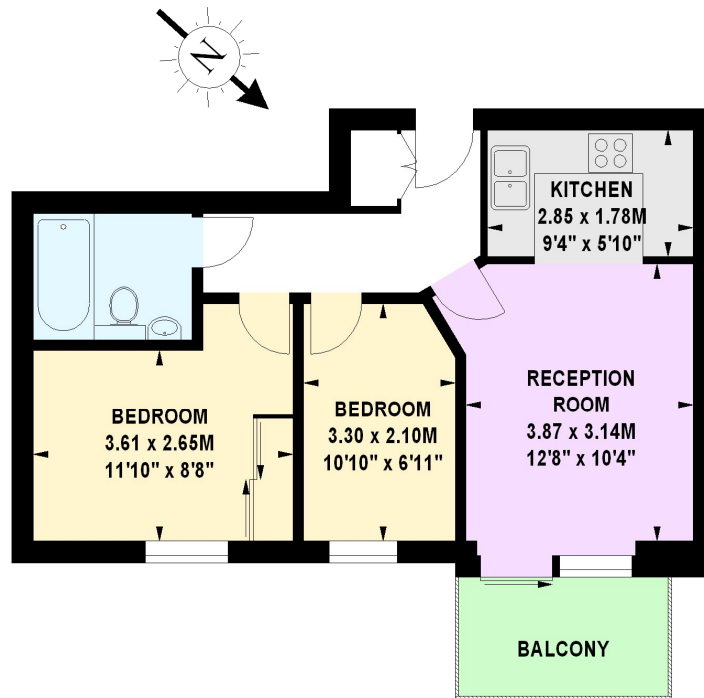
This beautifully modern two bedroom flat offers fantastic river views from its secluded balcony. Offering two double bedrooms. Just a brief walk to Wandsworth Town station.

**CHESTERTONS**

# Omega Building, SW18

Approximate gross internal area

47.56 sq m / 512 sq ft



## Second Floor

The floor plan is not to scale and measurements and areas shown are approximate and therefore should be used for illustrative purposes only.

The plan been prepared in accordance with the RICS code of Measuring Practice and whilst we have confidence in the information produced, it must be not be relied on.

If there is any aspect of particular importance, you should carry out or commission your own inspection of the property.

Copyright of FeaturePRO.

**Tenure:** Long Let

**Part Furnished**

Additional tenant charges apply

Tenancy Agreement Fee: £300

References per Tenant/Guarantor: £60

Inventory check (approx. £100 – £250 inc. VAT)

[chestertons.com/property-to-rent/applicable-fees](https://www.chestertons.com/property-to-rent/applicable-fees)

Energy Efficiency Rating		Current	Potential
Very energy efficient - lower running costs			
(92+)	A		
(81-91)	B		
(69-80)	C	80	84
(55-68)	D		
(39-54)	E		
(21-38)	F		
(1-20)	G		
Not energy efficient - higher running costs			
England, Scotland & Wales		EU Directive 2002/91/EC	

## Chestertons Wandsworth Lettings

11 Huguenot Place

London

SW18 2EN

[lettings.wandsworth@chestertons.com](mailto:lettings.wandsworth@chestertons.com)

02081047540

[chestertons.com](https://www.chestertons.com)