



Greencroft Gardens, London, NW6

## Greencroft Gardens, London, NW6

A spacious and well-proportioned one-bedroom apartment set within a well-maintained building on the sought-after Greencroft Gardens, NW6.

This impressive property offers an exceptionally large reception room, perfect for both entertaining and comfortable living, along with a huge double bedroom providing ample space for wardrobes and additional furnishings. The separate kitchen is well laid out, offering excellent storage and workspace. The building benefits from modern communal areas, creating a smart and welcoming entrance for residents and visitors alike. Ideally located within easy reach of local amenities, transport links and green spaces, this apartment is perfect for professionals or couples seeking generous living space in a prime North West London location.

Early viewing is highly recommended.

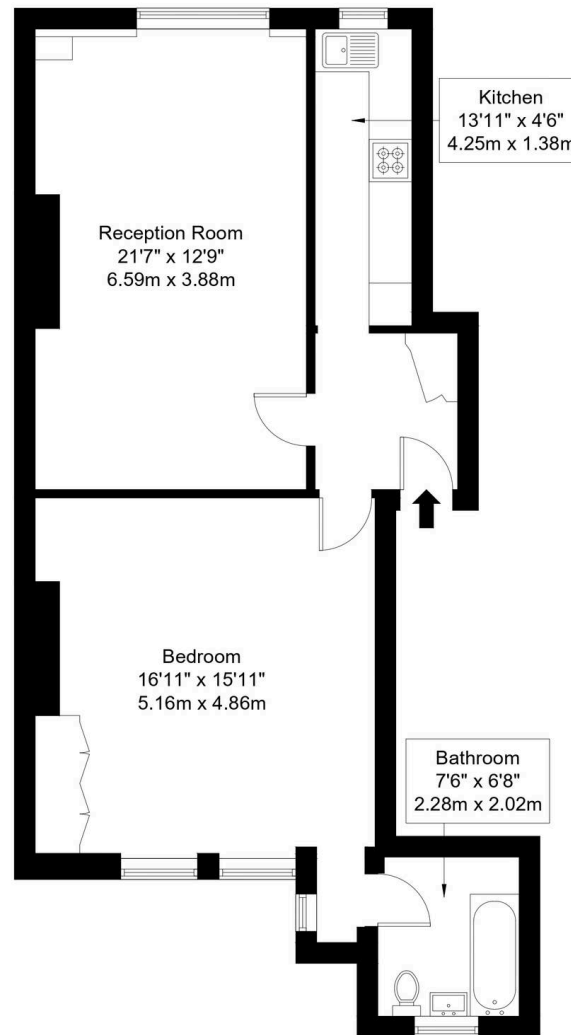
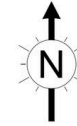






# Greencroft Gardens, NW6 3PG

Approx Gross Internal Area = 67.9 sq m / 731 sq ft



Second Floor

Ref :

Copyright

**B L E U**  
**P L A N**

The Floor plan is not to scale and measurements and areas shown are approximate and therefore should be used for illustrative purposes only. The plan has been prepared in accordance with the RICS code of Measuring Practice and whilst we have confidence in the information produced it must not be relied on. Maximum lengths and widths are represented on the floor plan. If there is any aspect of particular importance, you should carry out or commission your own inspection of the property.

Copyright @ BleuPlan





## Black Katz

22 West Hampstead Mews, London - NW6 3BB

02073285000 • [Thomas@blackkatz.com](mailto:Thomas@blackkatz.com) • [blackkatz.com/](http://blackkatz.com/)