



Price
£200,000

Freehold

3x  1x  1x 

**Wilkes Road, Sandown,
Isle of Wight, PO36**

OVER 60?

Secure this property
for up to **59% less!**

Pittis 
Helping you move forwards



Main features

- Modernised throughout along with a new roof
- Stone's throw away from Sandown High Street and beach
- Private sunny courtyard garden to enjoy
- Spacious accommodation with sea view from bedroom 1
- Ideal house as a low maintenance lock up leave or first time purchase

Accommodation

GROUND FLOOR

Entrance Hallway
 Lounge/Dining Room: 14'1 x 12'7 (4.30m x 3.84m)
 Kitchen: 18'11 x 11'3 (5.77m x 3.43m)

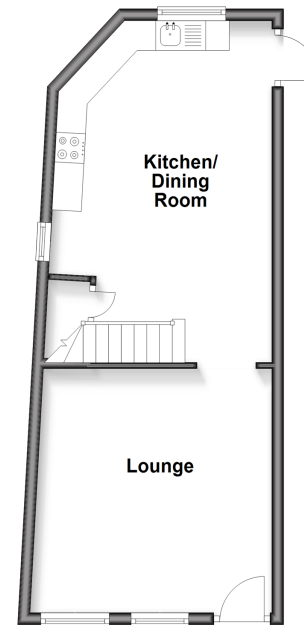
FIRST FLOOR

Landing
 Bedroom 1: 16'8 x 12'11 (5.08m x 3.94m)
 Bedroom 2: 11'5 x 10'7 (3.48m x 3.23m)
 Bedroom 3: 11'4 x 5'7 (3.46m x 1.70m)
 Separate Toilet
 Bathroom

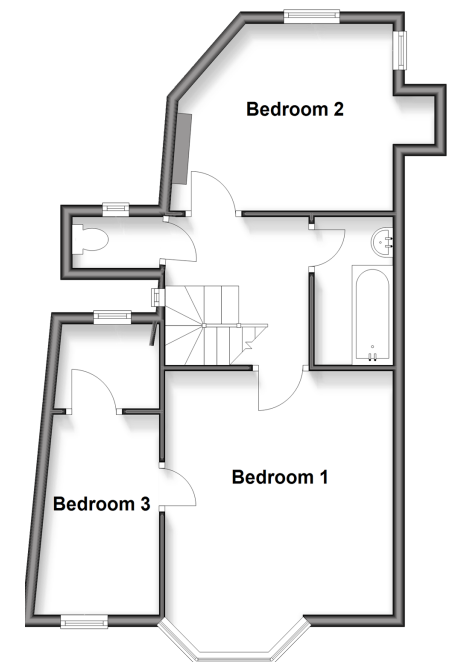
OUTSIDE

Rear Courtyard

Ground Floor
 Approx. 37.8 sq. metres (407.0 sq. feet)



First Floor
 Approx. 49.6 sq. metres (534.0 sq. feet)



Call Sandown - 01983 407444 ■ pittis.co.uk

- Legal advice should be taken to verify fixtures/fittings, planning, alterations and/or lease details
- Through a Homewise Home For Life Plan people aged 60+ can secure this property for up to 50% less, by purchasing a Lifetime Lease

- Appliances & services are untested, dimensions are approximate and floor plans are not to scale



60514629/20251217/DW/JW