

Main Road, Drayton Parslow, Milton Keynes, MK17

Offers Over £210,000 (Guide Price £210,000 to £220,000)

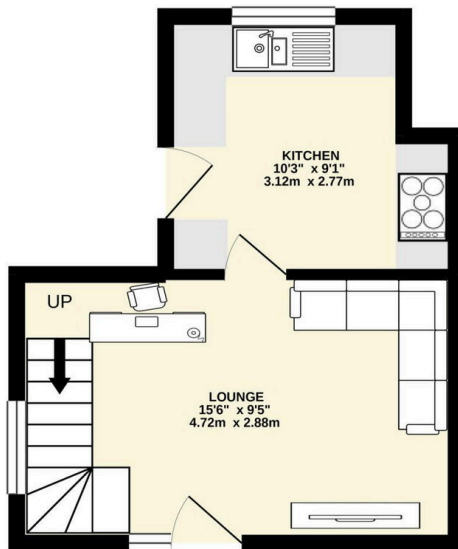


Charming one-bedroom end of terrace cottage in the heart of Drayton Parslow, beautifully presented throughout and offering characterful accommodation ideal for first-time buyers, downsizers or those seeking a peaceful village setting. - REF: AJ1276

Key Features

- Charming one bedroom cottage
- Council tax band - B
- Beautifully presented throughout
- Private courtyard seating area
- Ideal first-time purchase or downsizer
- Current owner since 2022
- 45m² = 484 Sq Ft
- Generous double bedroom
- On-street parking nearby
- REF: AJ1276

GROUND FLOOR



1ST FLOOR



Whilst every attempt has been made to ensure the accuracy of the floorplan contained here, measurements of doors, windows, rooms and any other items are approximate and no responsibility is taken for any error, omission or mis-statement. This plan is for illustrative purposes only and should be used as such by any prospective purchaser. The services, systems and appliances shown have not been tested and no guarantee as to their operability or efficiency can be given.
Made with Metropix ©2020