



**Price**  
**£280,000**

**Freehold**

1x  1x  1x 

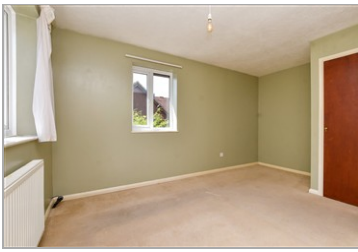
**Teazlewood Park,  
Leatherhead, Surrey,  
KT22**

**OVER 60?**

Secure this property  
for up to **59% less!**



**cubitt & west**  
Helping you move forwards



## Main features

- Quiet, tucked away location
- Close to local amenities
- Private garden
- Perfect for first-time buyers or investors
- Allocated parking

## Accommodation

### GROUND FLOOR

- Hallway
- Lounge: 14'7 x 11'5 (4.45m x 3.48m)
- Kitchen: 9'9 x 5'4 (2.97m x 1.63m)

### FIRST FLOOR

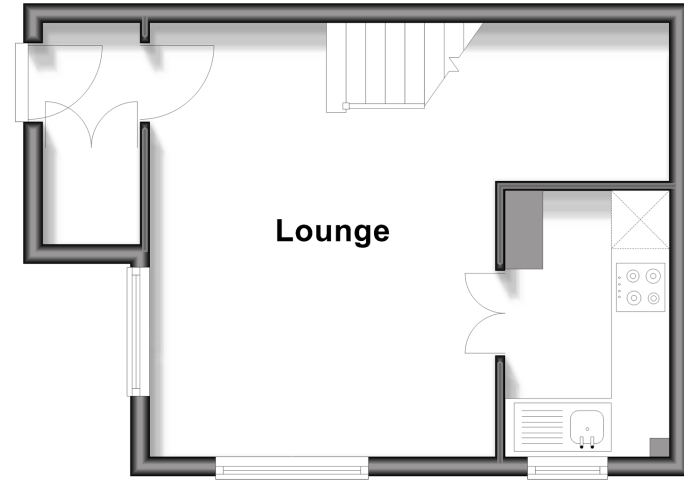
- Landing
- Bedroom: 14'9 x 10'5 (4.50m x 3.18m)
- Bathroom

### OUTSIDE

- Front Garden
- Allocated Parking

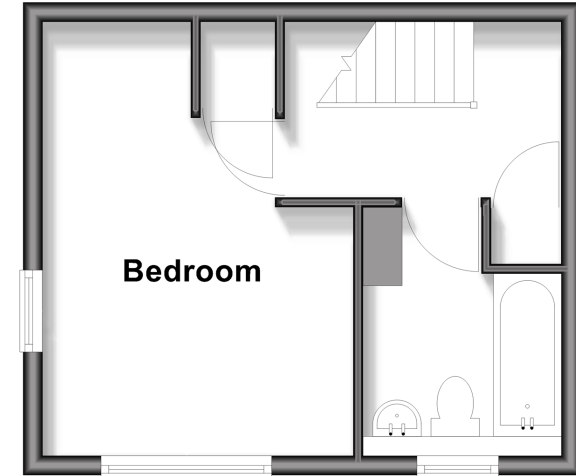
## Ground Floor

Approx. 26.5 sq. metres (285.1 sq. feet)



## First Floor

Approx. 24.0 sq. metres (258.0 sq. feet)



**Call Leatherhead - 01372 373780 ■ CubittAndWest.Co.Uk**

- Legal advice should be taken to verify fixtures/fittings, planning, alterations and/or lease details
- Appliances & services are untested, dimensions are approximate and floor plans are not to scale
- Through a Homewise Home For Life Plan people aged 60+ can secure this property for up to 59% less, by purchasing a Lifetime Lease



21101017/20260131/CFE/JG