

95a Pearcroft Road, London - E11 4DP

£300,000 Share of Freehold

Share of freehold • Requires full modernisation throughout • Excellent potential to extend into loft (STPP) • Opportunity to reconfigure layout and improve flow • Located within a Victorian terrace • Highly desirable residential road • Strong value-add potential • Ideal for investors or end-users looking to personalise • Leyton and Leytonstone Central Line Station



**HIGHCASTLE
ESTATES**

020 3026 4420
sales@hceuk.com

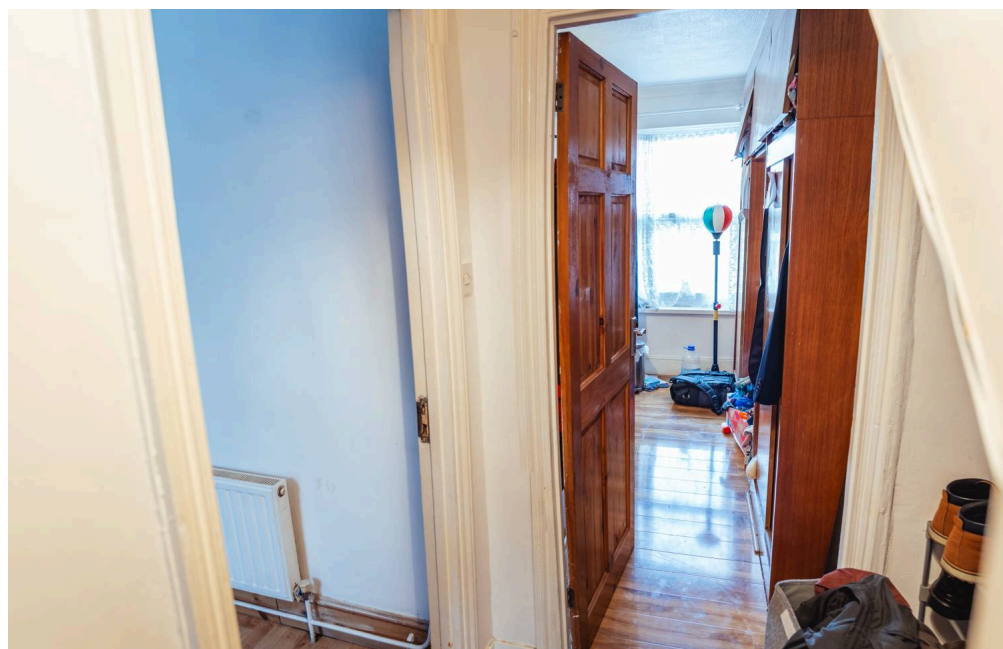
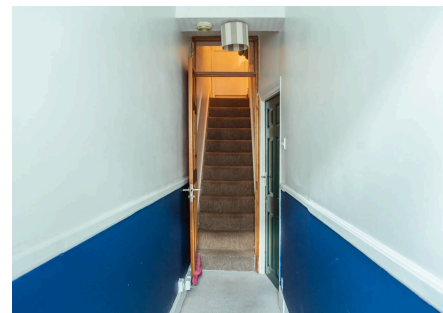
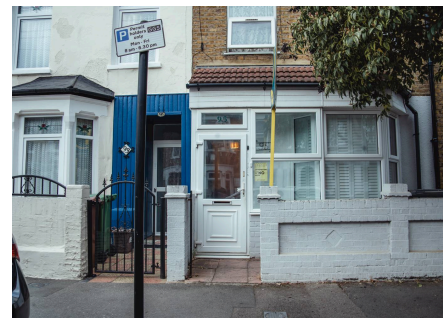
One-bedroom Victorian flat on Pearcroft Road, Leytonstone. Renovation and loft extension potential (STPP), share of freehold, near tube, shops, and green spaces. View by appointment.

Council Tax band: B

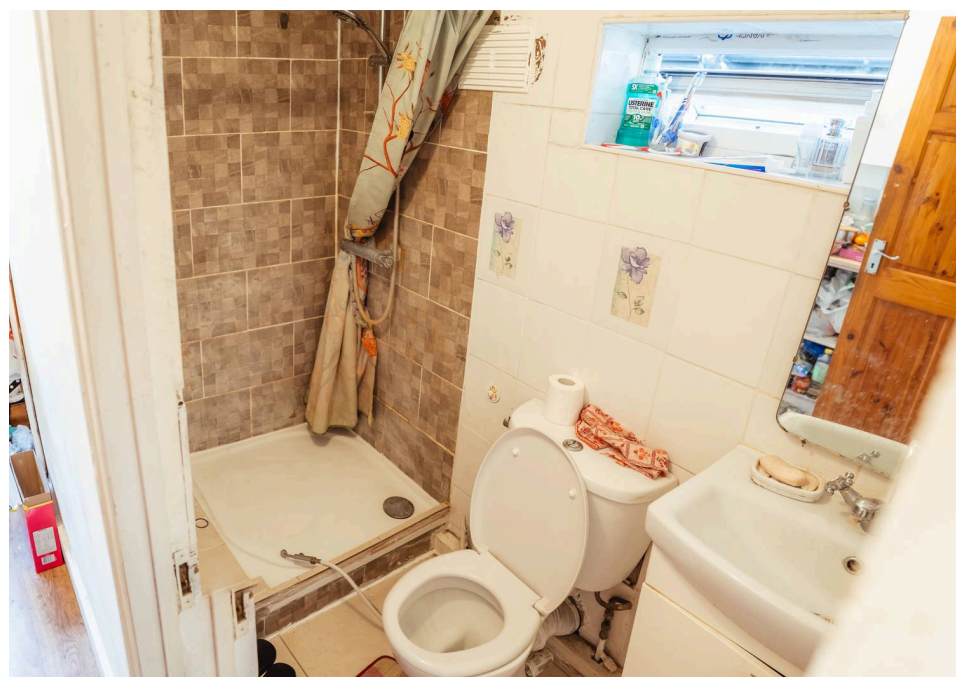
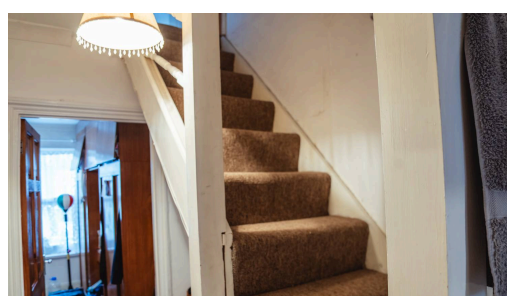
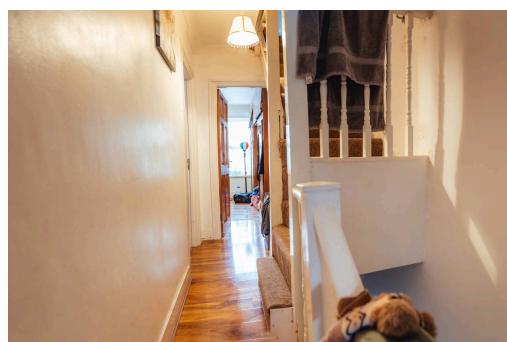
Tenure: Share of Freehold

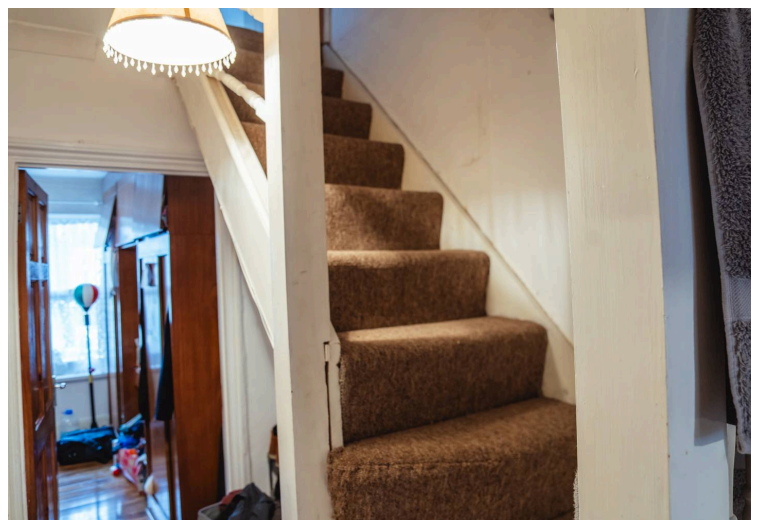
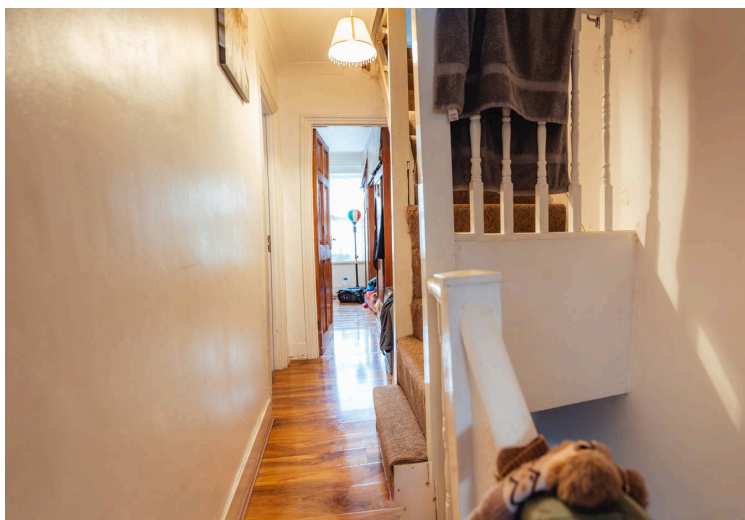
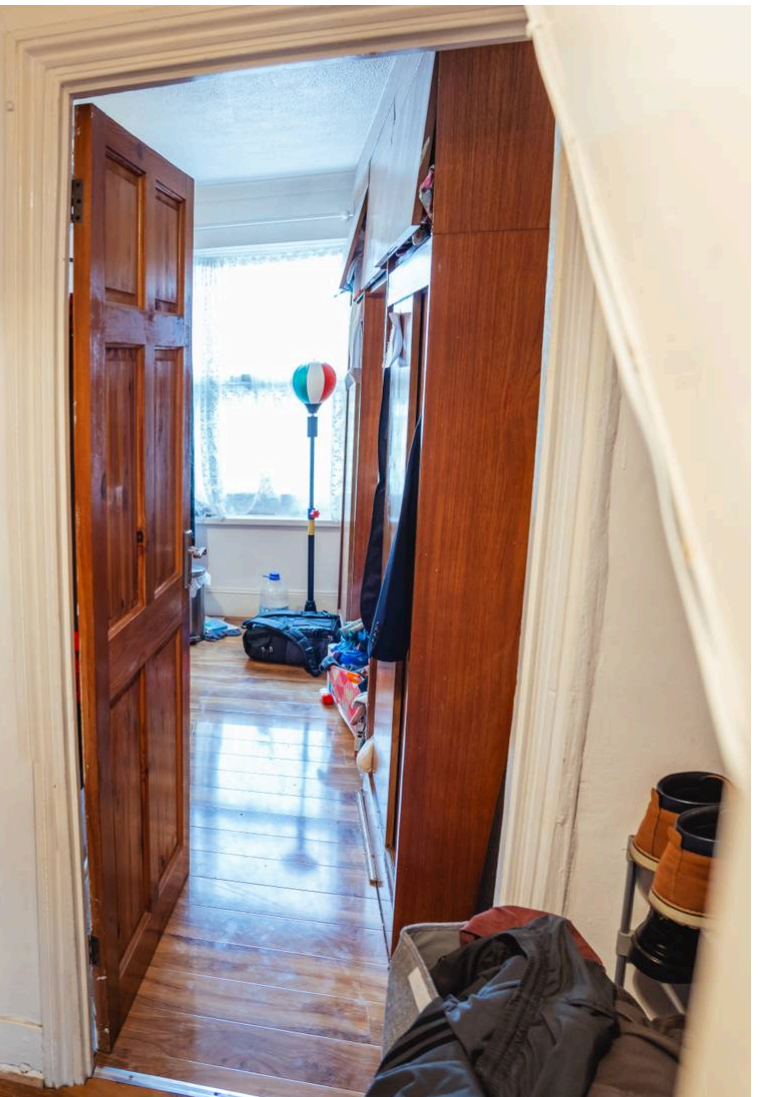
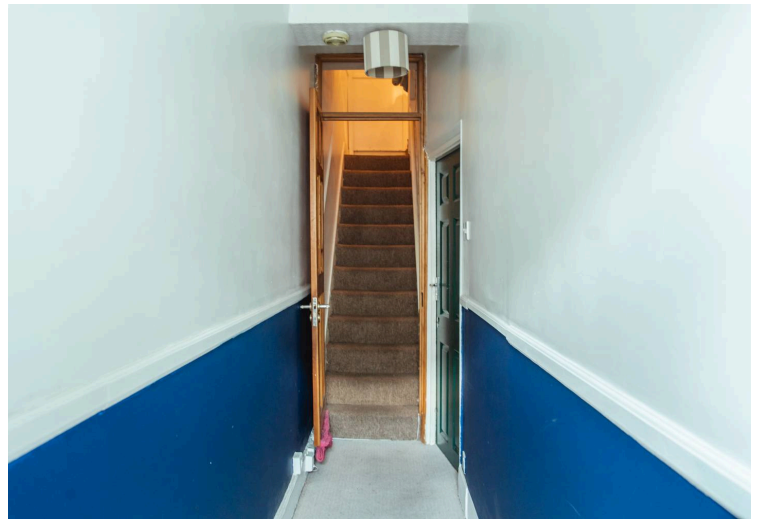
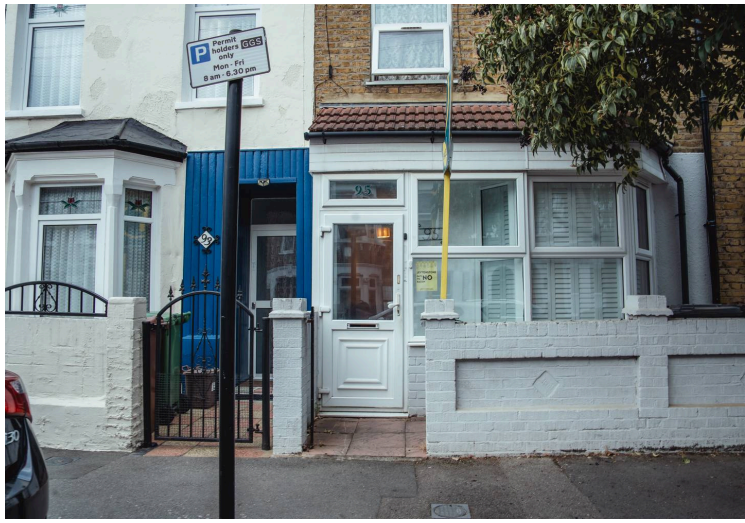
EPC Energy Efficiency Rating: D

EPC Environmental Impact Rating: E

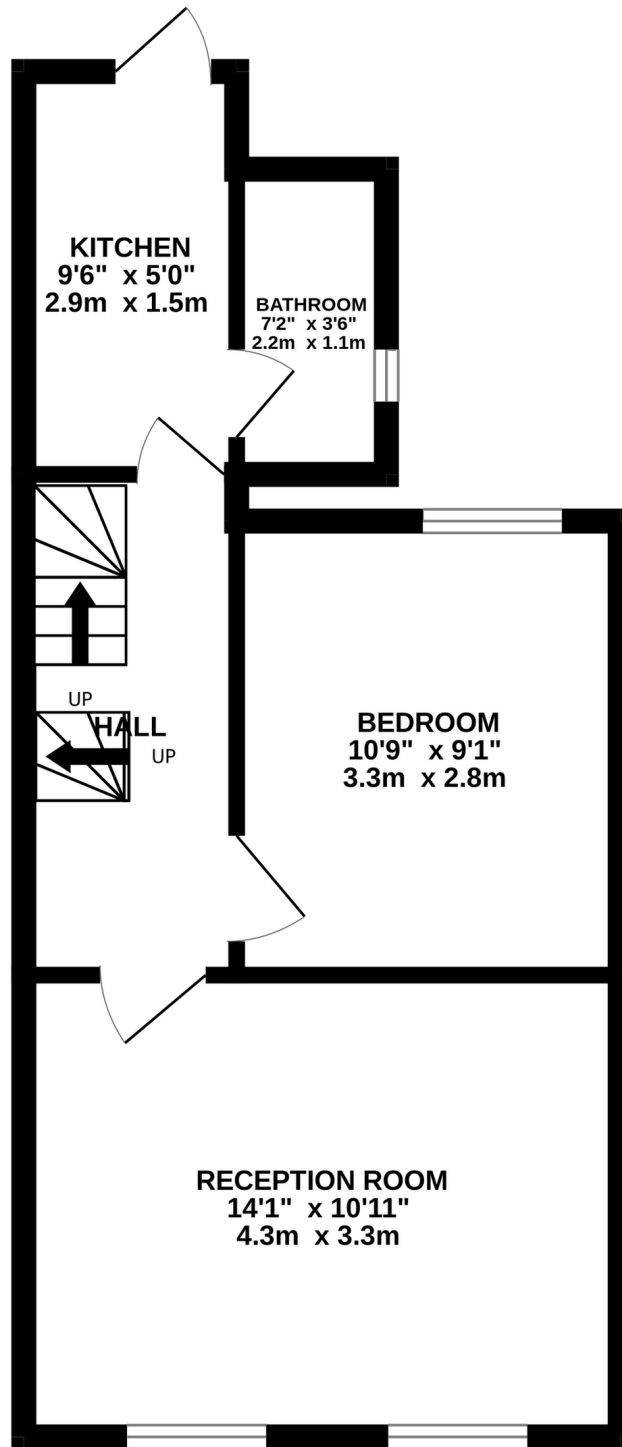


- Share of freehold
- Requires full modernisation throughout
- Excellent potential to extend into loft (STPP)
- Opportunity to reconfigure layout and improve flow
- Located within a Victorian terrace
- Highly desirable residential road
- Strong value-add potential
- Ideal for investors or end-users looking to personalise
- Leyton and Leytonstone Central Line Station





1ST FLOOR
383 sq.ft. (35.6 sq.m.) approx.



You can include any text here. The text can be modified upon generating your brochure.