



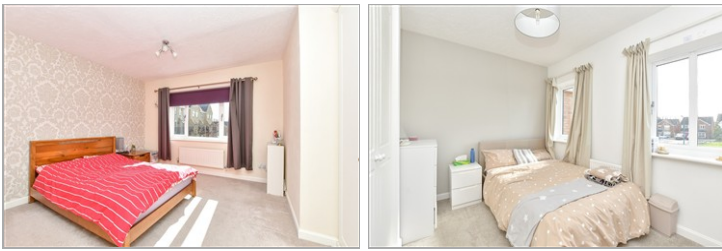
Guide Price
£525,000

Freehold

4x  2x  2x 

**Sheringham Close,
Allington, Maidstone,
Kent ME16**

Wards
Helping you move forwards



Main features

- Cul-de-sac position
- Fitted kitchen with separate utility room
- En-suite facilities to bedroom 1
- Double glazing and central heating
- Ample off road parking and an integral garage

Accommodation

GROUND FLOOR

Entrance Lobby
 Entrance Hall
 Lounge: 17'1 x 11'2 (5.21m x 3.41m)
 Dining Room: 10'10 x 8'0 (3.30m x 2.44m)
 Kitchen/Breakfast Room: 10'7 x 10'0 (3.23m x 3.05m)
 Cloakroom

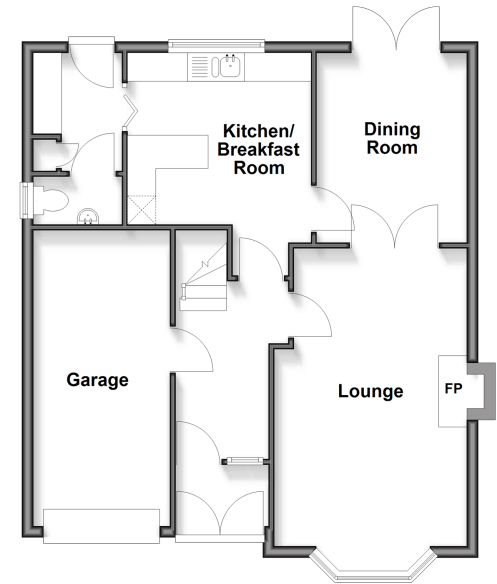
FIRST FLOOR

Landing
 Bedroom 1: 14'1 (4.30m) narrowing to 12'1 (3.69m) x 11'2 (3.41m)
 En-Suite Shower Room
 Bedroom 2: 11'7 x 9'6 (3.53m x 2.90m)
 Bedroom 3: 10'3 x 9'2 (3.13m x 2.80m)
 Bedroom 4: 7'4 x 7'1 (2.24m x 2.16m)
 Bathroom

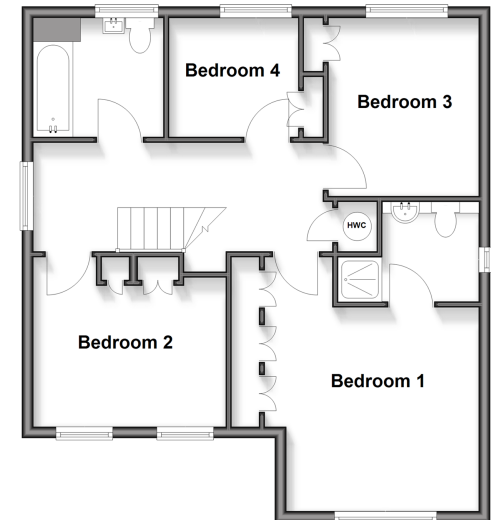
OUTSIDE

Rear Garden
 Front Garden
 Driveway
 Integral Garage

Ground Floor
 Approx. 65.0 sq. metres (699.2 sq. feet)



First Floor
 Approx. 61.4 sq. metres (660.9 sq. feet)



13158911/20260429/DS/DS

Call Maidstone - 01622 683737 ■ wardsof Kent.co.uk