



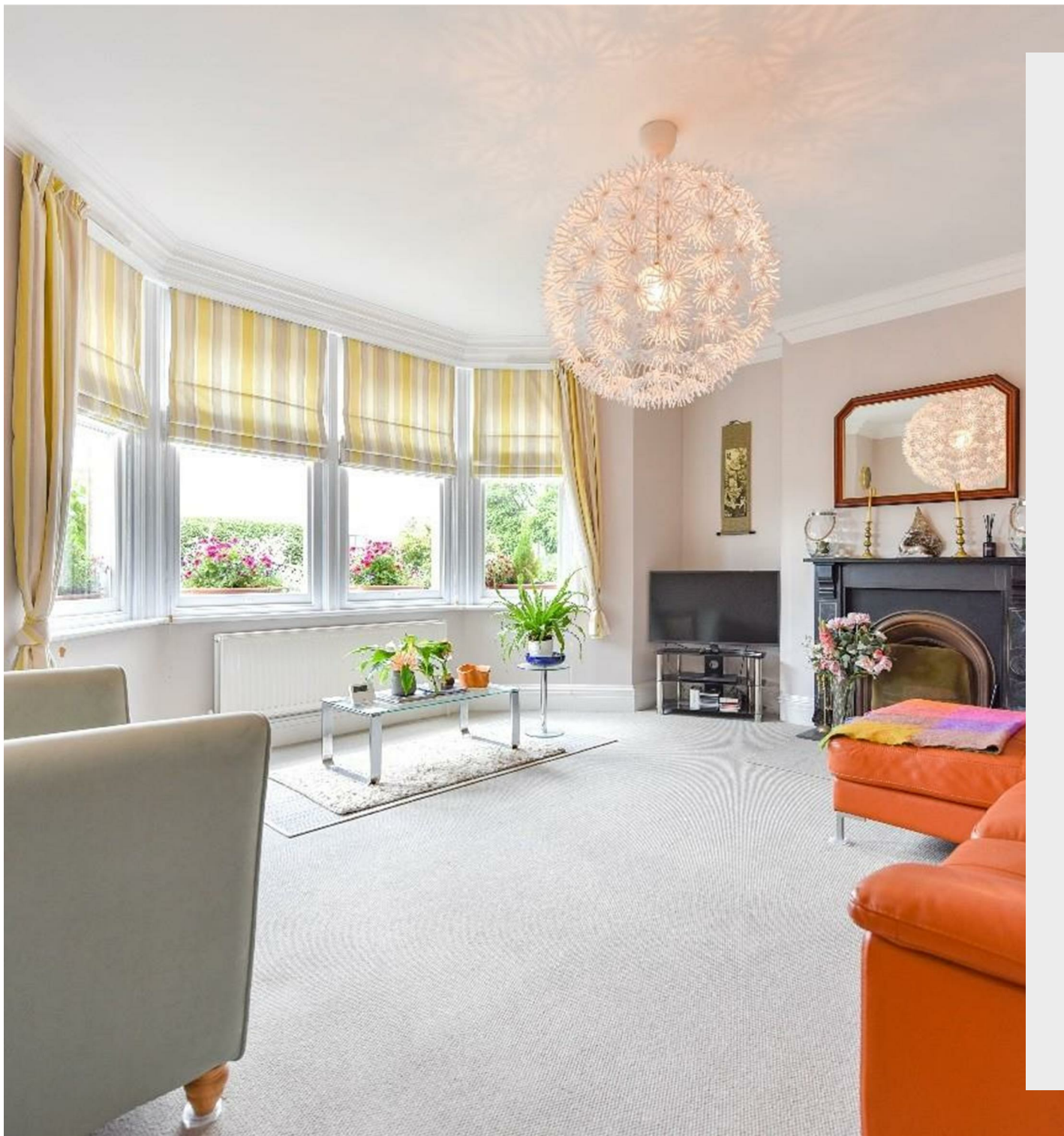
57 Queens Park Parade
Northampton, NN2 6LP



Derran Dooley

Partnered With

Simpsons
Property Experts



This impressive four-storey Edwardian family home has been thoughtfully extended and modernised to offer over 2,600 sq ft of elegant and versatile living space, combining period charm with contemporary comfort. Offered for sale with no upward chain, the property retains a wealth of original features including a stunning Minton mosaic tiled hallway, high corniced ceilings and attractive open-hearth fireplaces throughout.

The accommodation includes five generous bedrooms, a beautifully appointed family bathroom and a modern shower room, along with two well-proportioned reception rooms ideal for both entertaining and home working. At the heart of the home is an exceptional 21-foot kitchen/breakfast room featuring granite worktops, integrated appliances and a striking inglenook fireplace with dual-fuel burner, seamlessly flowing into a superb orangery with glazed lantern roof and French doors opening onto the garden.

Additional benefits include a two-room basement cellar providing useful storage, a utility room and cloakroom, and refurbished front sash windows with acoustic glazing.

Outside, the property is approached via a charming front garden, while the walled rear garden extends to approximately 130 feet and is beautifully landscaped with lawns, mature borders and fruit trees. At the far end of the garden is a large detached double width garage with electric doors, additional off-road parking and rear access via a service road.

Situated in a well-served residential area close to local amenities, schools and transport links, this substantial period home offers an exceptional opportunity for families seeking space, character and convenience in equal measure.

 5

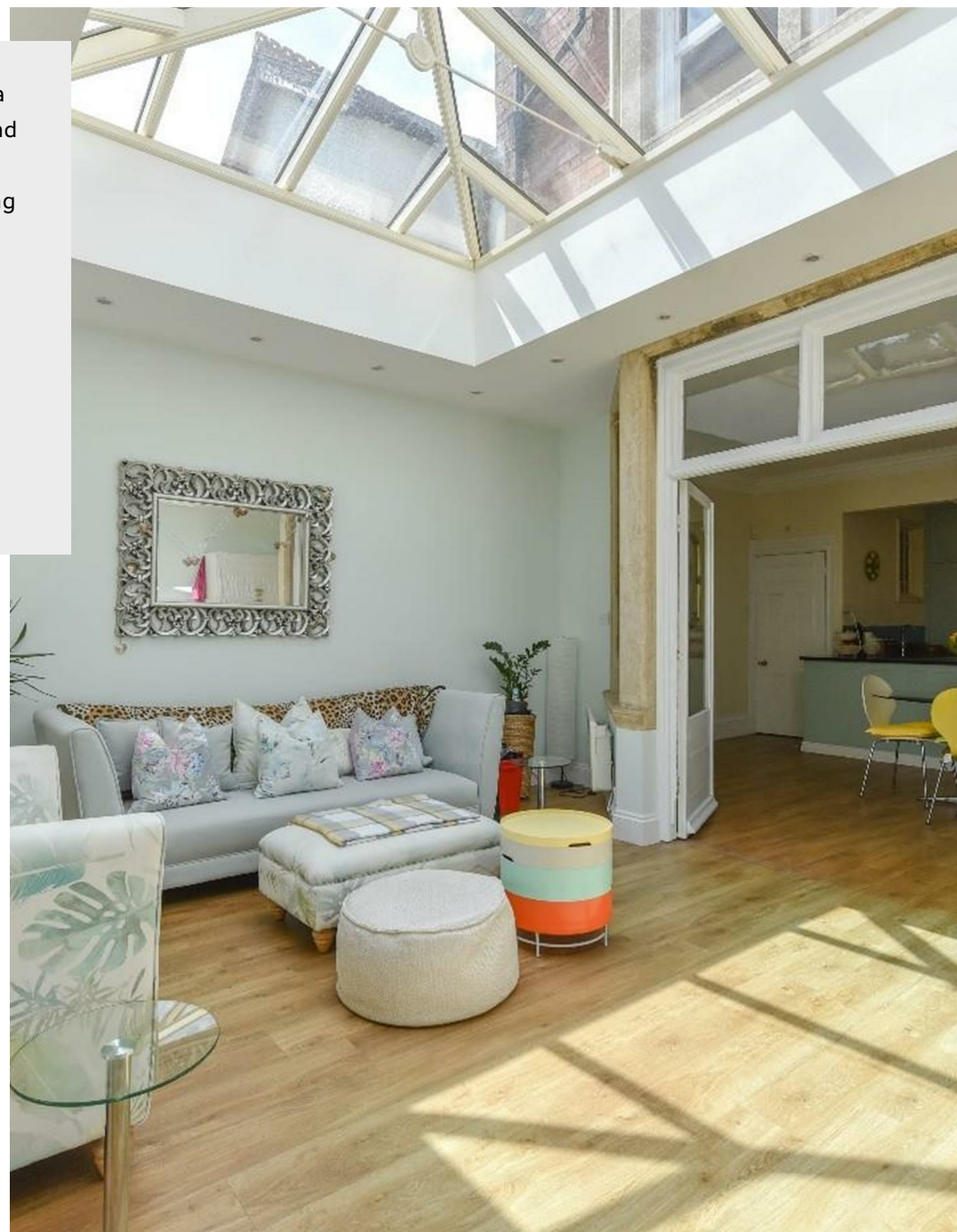
 2

 2

Guide price £525,000



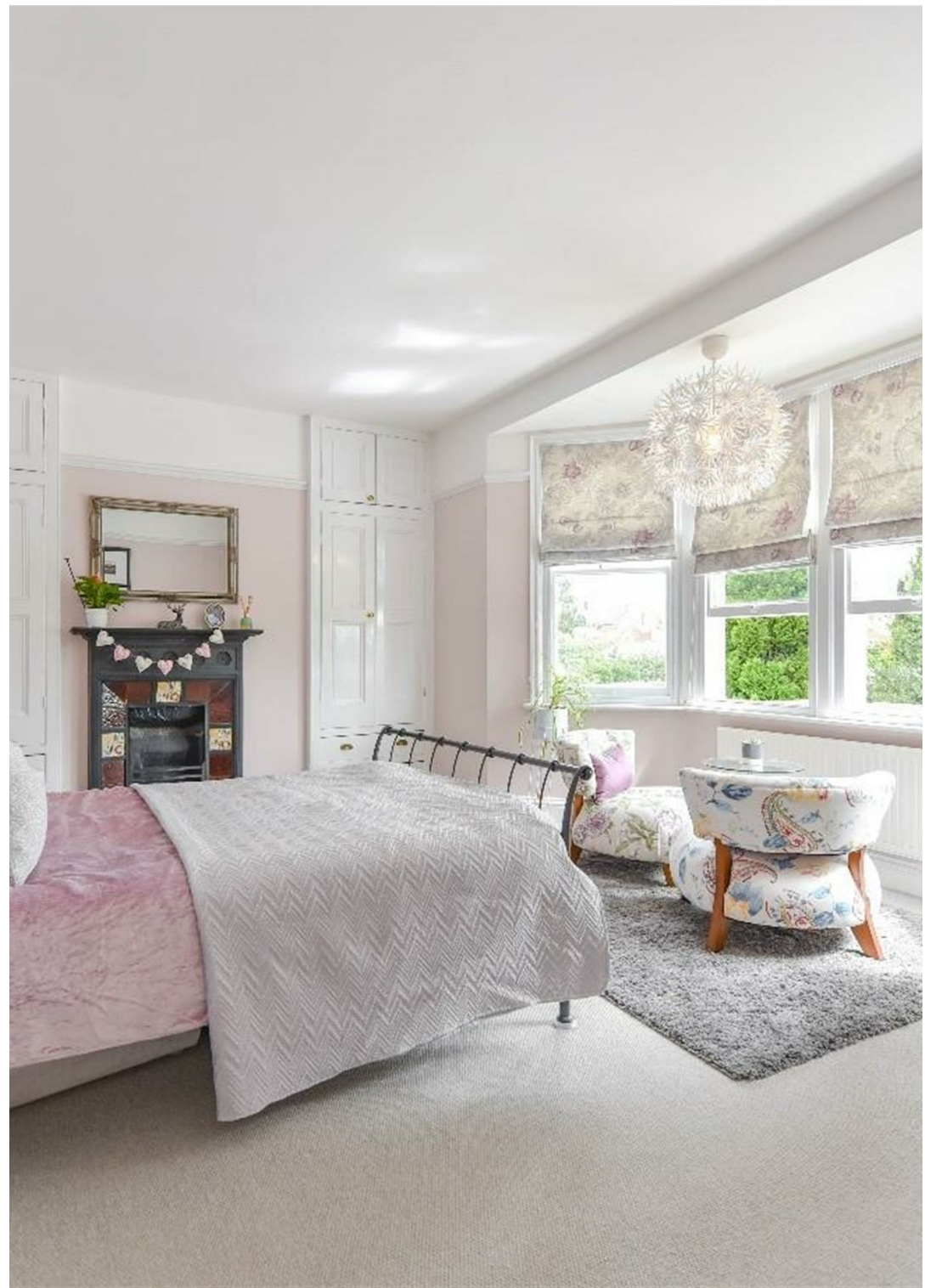
Located in the popular residential area of Queens Park, the property is well placed for a range of well-regarded primary and secondary schools, along with local shops, parks and everyday amenities. Northampton town centre is easily accessible, with regular bus services and convenient road links providing straightforward access for shopping, dining and commuting. The area is well suited to families and professionals alike, offering a strong sense of community alongside excellent connectivity.





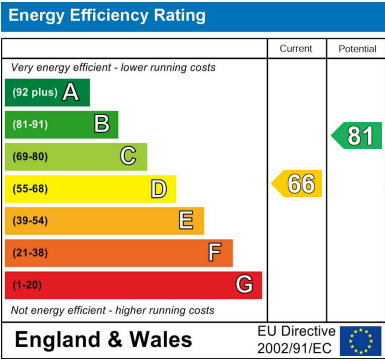
VENDORS COMMENTS;

"We have loved living in this beautiful Edwardian home and have really enjoyed all the space it offers for family life. The area is fantastic, and we've been lucky to have such friendly neighbours. It's a stunning house with so much character, and it's been a joy to make it our home. We are sad to be moving, but due to relocation for work, it's time to pass this home on to the next family to enjoy as much as we have."





Whilst every attempt has been made to ensure the accuracy of the floor plan contained here, measurements of doors, windows, rooms and any other items are approximate and no responsibility is taken for any error, omission, or mis-statement. The plan is copyright to Simpson and Partners and is for illustrative purposes and should only be used as such by any prospective purchaser. The services, systems and appliances shown have not been tested and no guarantee as to their operability can be given. Made with Metropix ©2026



You may download, store and use the material for your own personal use and research. You may not republish, retransmit, redistribute or otherwise make the material available to any party or make the same available on any website, online service or bulletin board of your own or of any other party or make the same available in hard copy or in any other media without the website owner's express prior written consent. The website owner's copyright must remain on all reproductions of material taken from this website.



Derran Dooley
Partnered With

Simpsons
Property Experts

Tel: 01604 969706

Email: northampton@simpsonspropertyexperts.co.uk

Web: simpsonspropertyexperts.co.uk/our-locations/northampton

