



## Lafone Street, SE1

£650,000

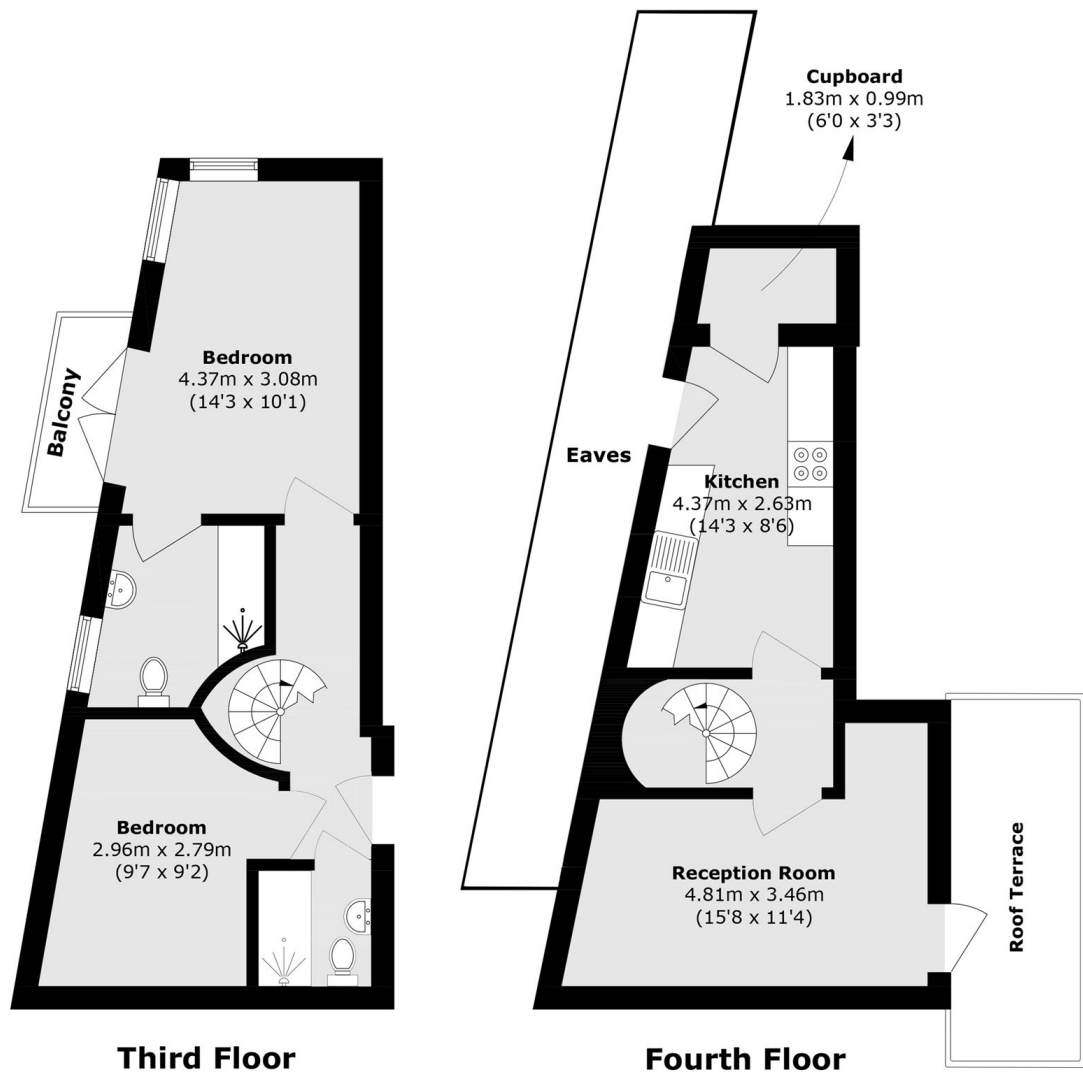
Situated on the top two floors of a quiet development, this two double bedroom split level flat boasts a large kitchen living space, two bathrooms, ample storage, parking and access to a private and communal roof terrace.

Fountain Court is located in the heart of Shad Thames and is surrounded by shops, cafés, delis and restaurants. London Bridge station is only 0.4 miles away offering excellent transport links to all of London.

### Features

- Two Double Bedrooms
- Share Of The Freehold
- Parking
- Split Level
- Roof Terrace
- Chain Free

# Lafone Street, London, SE1



Total area (approx.): 62.7 sq. m (674.9 sq. ft)  
(Excluding Eaves)

Balcony area (approx.): 2.3 sq. m (24.9 sq. ft)

Roof Terrace area: 7.3 sq. m (78.5 sq. ft)