



GUILDERSFIELD ROAD, SW16

£650,000

- Victorian house
- Three bedrooms
- End of terrace
- Fantastic potential
- Streatham Common location
- Energy rating: C

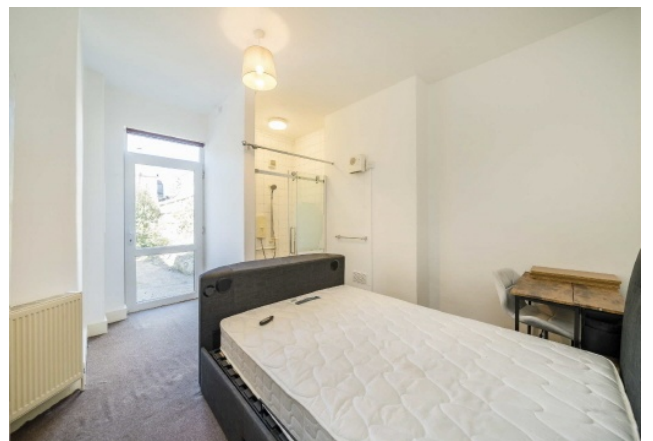




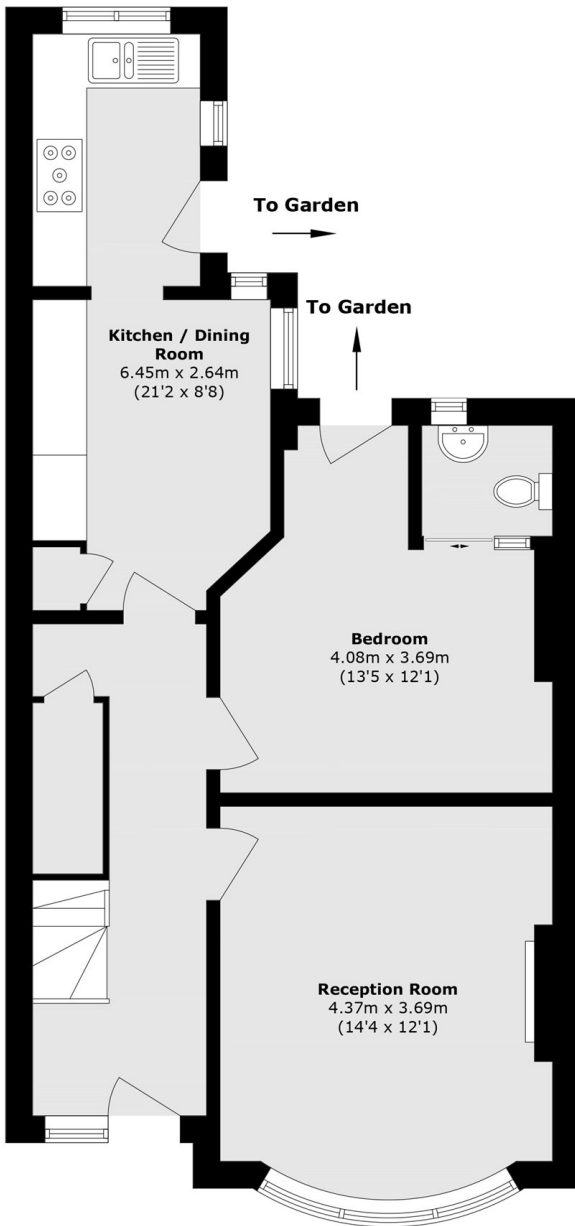
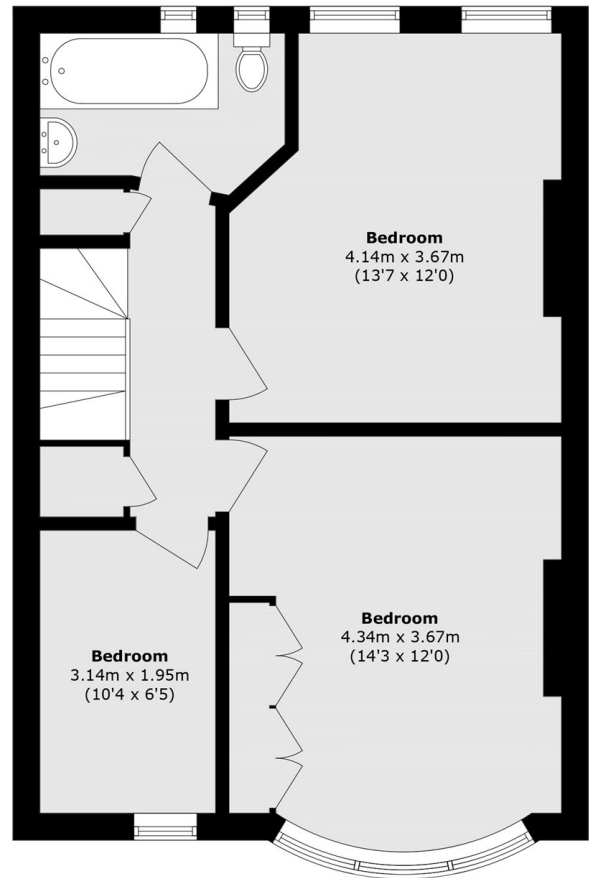
## ABOUT THE HOME

An end of terrace three bedroom house that offers fantastic potential for extension and modernisation. This family home benefits from three bedrooms, two reception rooms and a great sized private garden.

Guildersfield Road is a tree lined street in the Streatham Common vicinity. It's located in a quiet conservation area within very close proximity to the main amenities of Streatham High road including the Streatham hub leisure centre, restaurants, bars, café's and multiple large superstores. The property is also a short distance from the green, open and expansive spaces of Streatham Common park and the Rookery gardens. Transport links include Streatham station which offers the Thameslink service, offering direct access into London Bridge, Farringdon, Blackfriars and more. Streatham Common and Norbury stations are also close by, and offer direct access into London Victoria via Clapham Junction.






**Ground Floor**

**First Floor**

Total area (approx.): 106.9 sq. m (1150.6 sq. ft)

**JACKSONS STREATHAM**

1-3 De Montfort Parade,  
Streatham High Road,  
Sales: 020 8487 3179  
Lettings: 020 8487 3180

Energy Rating: C We aim to make our particulars both accurate and reliable. However they are not guaranteed; nor do they form part of an offer or contract. If you require clarification on any points then please contact us, especially if you're traveling some distance to view. Please note that appliances and heating systems have not been tested and therefore no warranties can be given as to their good working order.