



Meadow Way, TAMWORTH

burchell  
edwards





## Property Description

This charming two bedroom home sits in a quiet off-shoot of Meadow Way near Ashby Road. This popular development is host to a shop and school along with access to a nature reserve.

The home itself benefits from a driveway and the interior consists of an entrance hall, guest W.C., kitchen, lounge, two bedrooms, en suite and a family bathroom. The rear garden is private and well looked after and the home is in good condition throughout.

Call us today for more information and to see inside!

## Entrance Hallway

Door to front elevation, storage cupboard and central heating radiator.

## Guest W.C

Double glazed window to front elevation, W.C, wash hand basin and central heating radiator.

## Lounge

Double glazed French doors to rear elevation and central heating radiator.

## Kitchen

Double glazed window to front elevation, a range of wall and base units with work surface over incorporating a sink with drainer unit, gas hob, electric oven, cooker hood, central heating radiator and central heating boiler housed.

## Landing

Double glazed window to side elevation and loft access with drop down ladders.

## Bedroom One

Double glazed window to front elevation, central heating radiator and over stairs storage cupboard.

## En-Suite

Double glazed window to front elevation, walk in shower, W.C, wash hand basin and central heating radiator.

## Bedroom Two

Double glazed window to rear elevation and central heating radiator.

## Bathroom

Panelled bath with shower and screen, W.C, wash hand basin and central heating radiator.

## Front Garden

Parking for two vehicles.

## Rear Garden

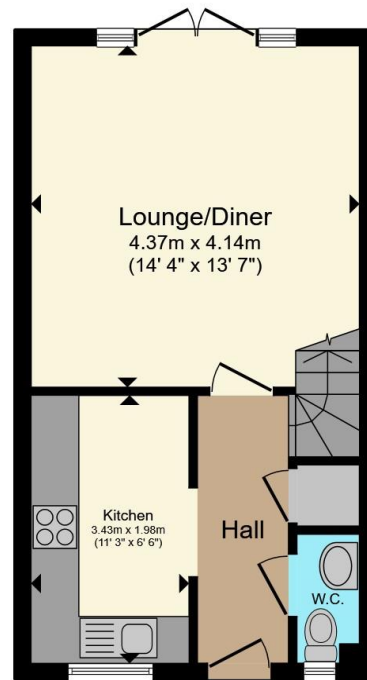
Slabbed patio, artificial lawn, fencing to all boundaries and gated side access to frontage.



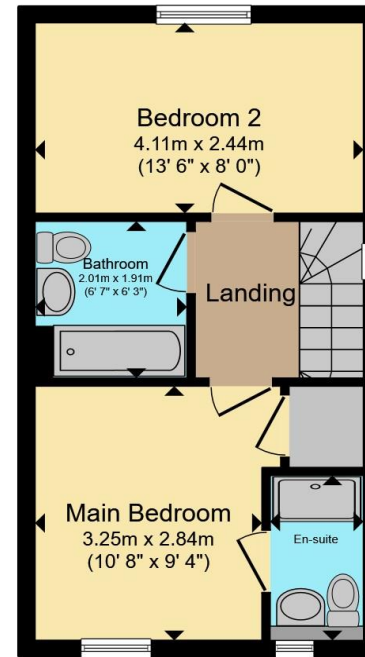








**Ground Floor**



**First Floor**

Total floor area 65.0 m<sup>2</sup> (699 sq.ft.) approx

This floor plan is for illustrative purposes only. It is not drawn to scale. Any measurements, floor areas (including any total floor area), openings and orientation are approximate. No details are guaranteed, they cannot be relied upon for any purpose and they do not form part of any agreement. No liability is taken for any error, omission or misstatement. A party must rely upon its own inspection(s). Powered by [www.propertybox.io](http://www.propertybox.io)



To view this property please contact Burchell Edwards on

**T 01827 66400**  
**E [tamworth@burchelledwards.co.uk](mailto:tamworth@burchelledwards.co.uk)**

1 Bolebridge Street  
 TAMWORTH B79 7PA

EPC Rating: B Council Tax  
 Band: B

Tenure: Freehold

**view this property online [burchelledwards.co.uk/Property/TAM207305](http://burchelledwards.co.uk/Property/TAM207305)**



1. MONEY LAUNDERING REGULATIONS Intending purchasers will be asked to produce identification documentation at a later stage and we would ask for your co-operation in order that there will be no delay in agreeing the sale. 2. These particulars do not constitute part or all of an offer or contract. 3. The measurements indicated are supplied for guidance only and as such must be considered incorrect. Potential buyers are advised to recheck measurements before committing to any expense. 4. We have not tested any apparatus, equipment, fixtures, fittings or services and it is in the buyers interest to check the working condition of any appliances.

Burchell Edwards is a trading name of Connells Residential which is registered in England and Wales under company number 1489613, Registered Office is Cumbria House, 16-20 Hockliffe Street, Leighton Buzzard, Bedfordshire, LU7 1GN. VAT Registration Number is 500 2481 05.

**See all our properties at [www.burchelledwards.co.uk](http://www.burchelledwards.co.uk) | [www.rightmove.co.uk](http://www.rightmove.co.uk) | [www.zoopla.co.uk](http://www.zoopla.co.uk)**

Property Ref: TAM207305 - 0003