





Located in Caroline Place, Harlington, UB3, this exceptionally large and unique studio flat offers a rare sense of space and practicality. The property features a separate kitchen, a spacious living area, and a generous bathroom, setting it apart from typical studio layouts.

Further benefits include parking, central heating, and an easily extendable lease, making it an excellent investment opportunity.

Ideally situated, the property is close to local shops, amenities, and offers excellent transport links, with easy access to the M4, A4, Heathrow Airport, and routes into Central London.

A highly desirable and versatile property with strong long-term appeal.

Exceptionally large and unique studio flat with a well-designed, spacious layout

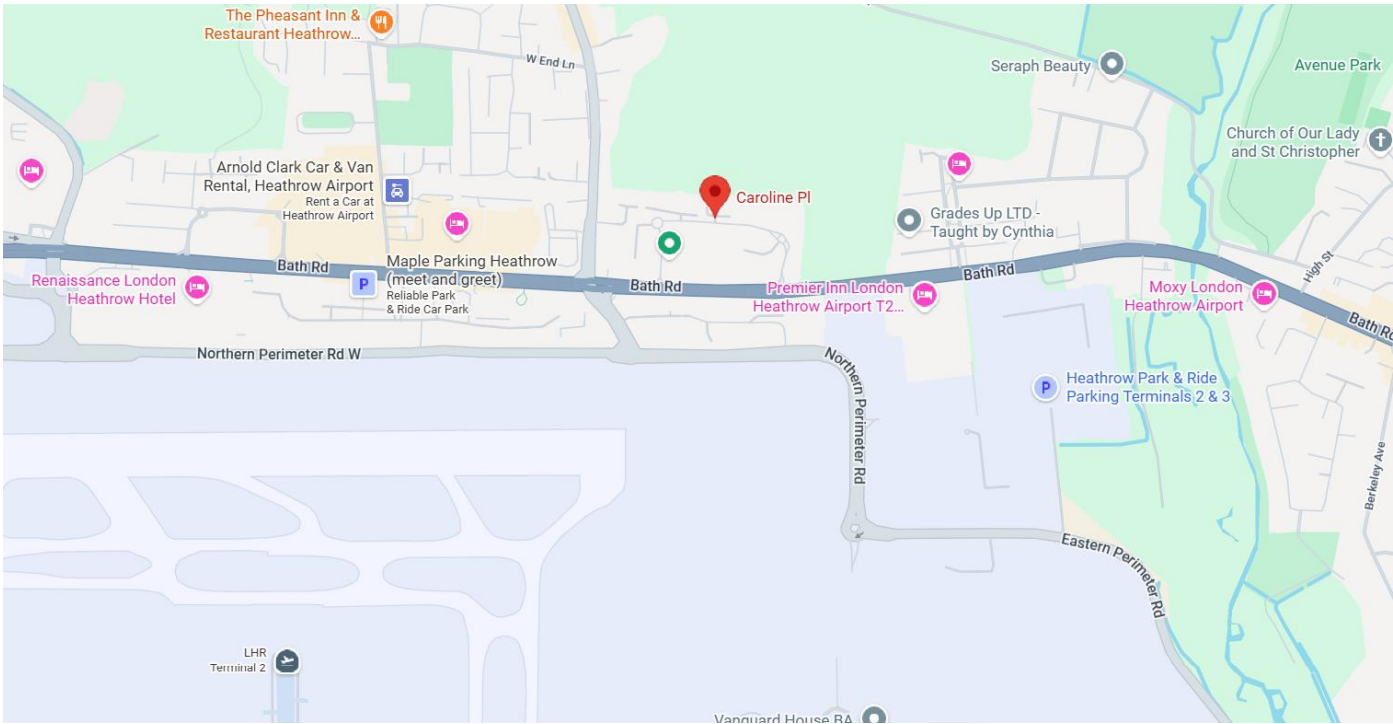
Separate kitchen and generous bathroom, offering more practicality than typical studios

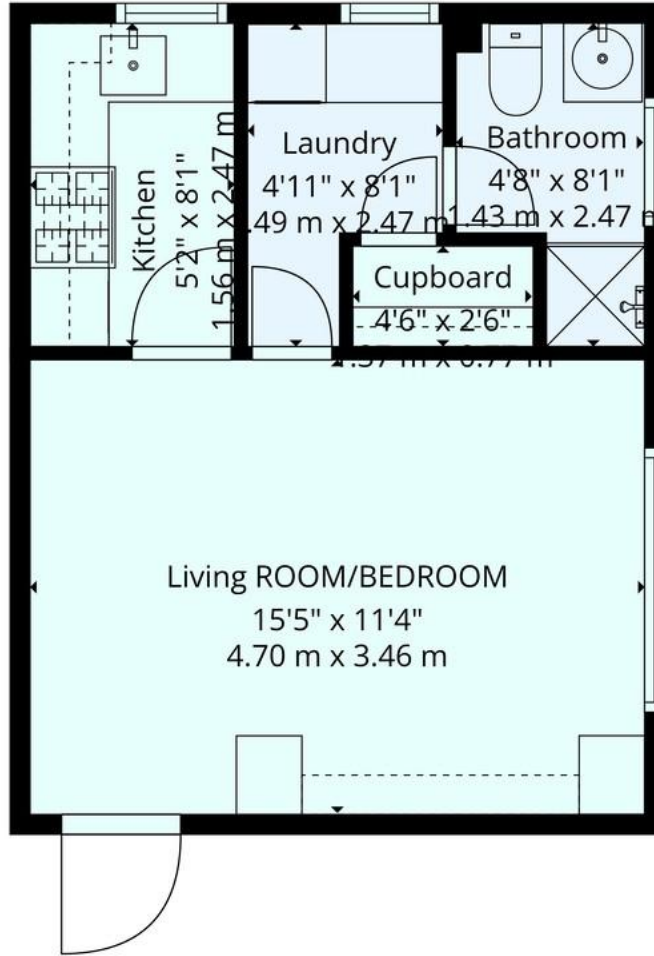
Benefits include central heating and parking availability

Excellent investment opportunity with an easily extendable lease

Conveniently located in Harlington, close to local amenities, Heathrow Airport, and great transport







Total: 306 sq. Ft, 28 m2
 1st Floor: 306 sq. Ft, 28 m2
 Excluded Areas: Walls: 36 sq. Ft, 4 m2

Floor Plans Are Provided For General Guidance And Illustrative Purposes Only. While Every Effort Has Been Made To Ensure Accuracy, Measurements And Layouts Are Approximate And Not To Scale. These Plans Should Not Be Relied Upon For Valuation, Legal, Or Mortgage Purposes. We Recommend All Interested Parties Carry Out Their Own Inspections And Assessments



Hiltons Estates, 137 Western Road
Southall, UB2 5HN

www.hiltons-estates.com
email: harvin@hiltons-estates.com
0208 867 9555 / 07961 527301

Agents Note: Whilst every care has been taken to prepare these sales particulars, they are for guidance purposes only. All measurements are approximate are for general guidance purposes only and whilst every care has been taken to ensure their accuracy, they should not be relied upon and potential buyers are advised to recheck the measurements.