



Emerald Road, NW10

£300,000

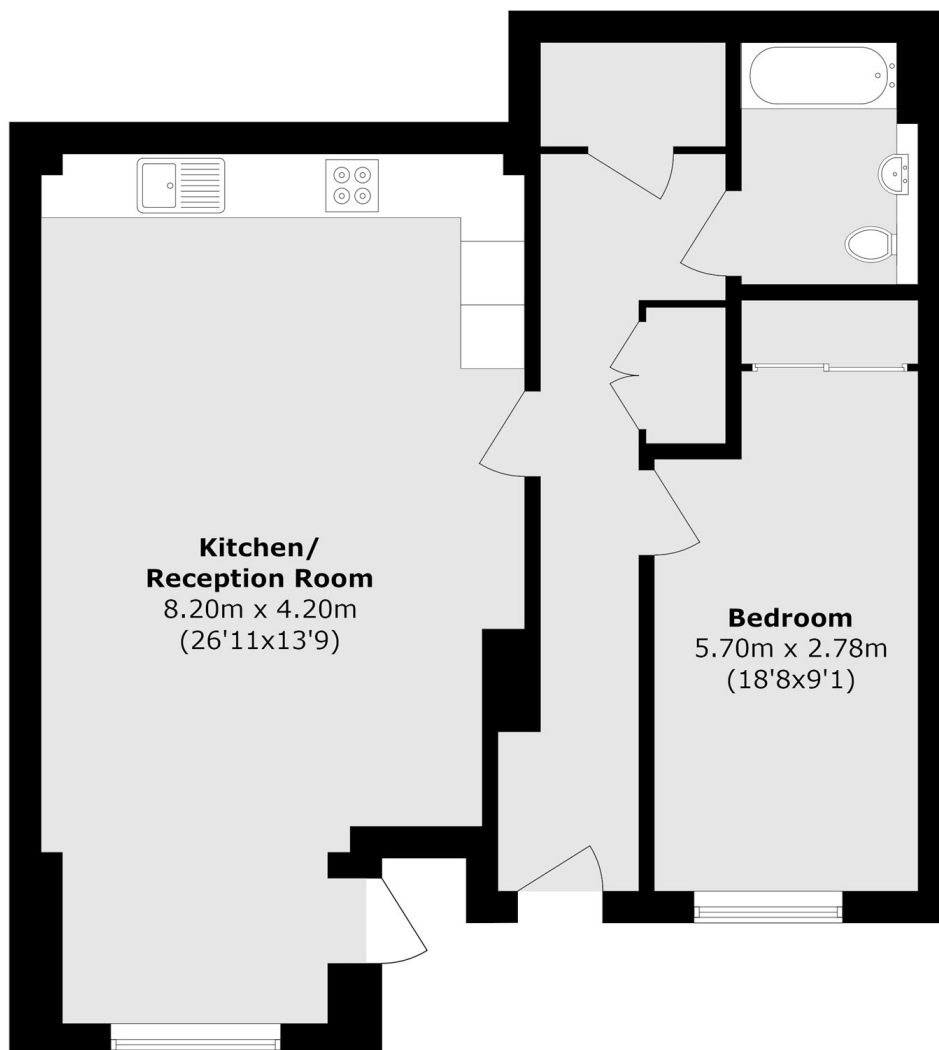
A well-presented ground floor flat with its own private entrance and a private patio. The property features high ceilings throughout, an open-plan kitchen and reception room, a modern three-piece bathroom. Further benefits include excellent storage across the property and underground parking.

Emerald Road is a residential street, conveniently located close to local shops, cafés and amenities. The property is within easy reach of nearby transport links including Harlesden Station (0.4m), providing straightforward access into Central London and the surrounding areas.

Features

- One Bedroom
- Ground Floor Flat
- Underground Parking
- Leasehold
- Excellent Condition
- New Build Development

Emerald Road, London, NW10



Total area (approx.): 64.7 sq. m (696.4 sq. ft)