



Apt 8, 26 Wicket Drive, Birmingham

£155,000 Leasehold

Hadleigh Estate Agents are delighted to offer this fantastic two bedroom apartment for sale. Located on Wicket Drive, the property offers move in ready accommodation, further benefitting from allocated parking space.

In brief the property comprises of a spacious open plan kitchen, lounge and dining area, with two double bedrooms and modern family bathroom. The property further boasts central heating, double glazing and two Juliet balconies.





Location

Wicket Drive is conveniently located for easy access to local amenities, nearby schools and leisure centres. Excellent transport links are on offer into Birmingham City Centre, along with nearby Hagley Road giving access to motorway networks. Most notably, Edgbaston Reservoir is a short walk away.

Entrance Hallway

Spacious hallway offering large storage cupboard, secure intercom system and ceiling light point.

Kitchen

Modern fitted kitchen with a range of base and wall units. Fitted oven, hob and extractor over. Tiled flooring and partially tiled splashbacks, sink and drainer unit along with plumbing for washing machine. Space for undercounter fridge and freezer, ceiling light point and double glazed window.

Lounge Diner

The lounge and dining area boasts two Juliet balconies, radiator and ceiling light point.





Master Bedroom

Spacious master bedroom, benefitting from double glazed window, radiator and ceiling light point.

Bedroom Two

Double bedroom offering double glazed window, radiator and ceiling light point.

Bathroom

Modern bathroom being partially tiled, fixed bath with mains shower over and handheld attachment. Low level flush WC, hand wash basin, towel radiator, ceiling light point and extractor fan.



Council Tax band: B

Tenure: Leasehold

Years Remaining: 116

Service Charge PA: £1,797.48

Ground Rent PA: £150

EPC Energy Efficiency Rating: B

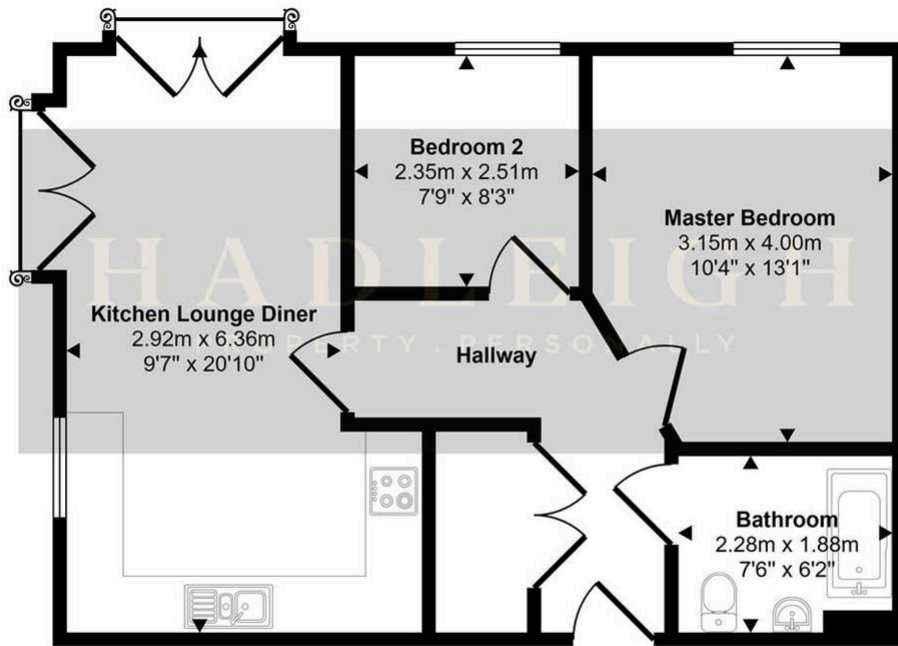
EPC Environmental Impact Rating: B



- Open plan kitchen/living/dining space
- Two double bedrooms & modern bathroom
- Allocated parking & two Juliet balconies



Approx Gross Internal Area
54 sq m / 585 sq ft



Floorplan

This floorplan is only for illustrative purposes and is not to scale. Measurements of rooms, doors, windows, and any items are approximate and no responsibility is taken for any error, omission or mis-statement. Icons of items such as bathroom suites are representations only and may not look like the real items. Made with Made Snappy 360.