



Flat 21, Glan Y Dwr Y Rhodfa, Barry

Barry

In Excess of **£130,000**



Flat 21

Glan Y Dwr Y Rhodfa, Barry

One bedroom upper floor apartment with stunning channel views, modern interiors, and excellent Barry location. Close to beaches, shops, and transport. No chain. Ideal for first-time buyers.

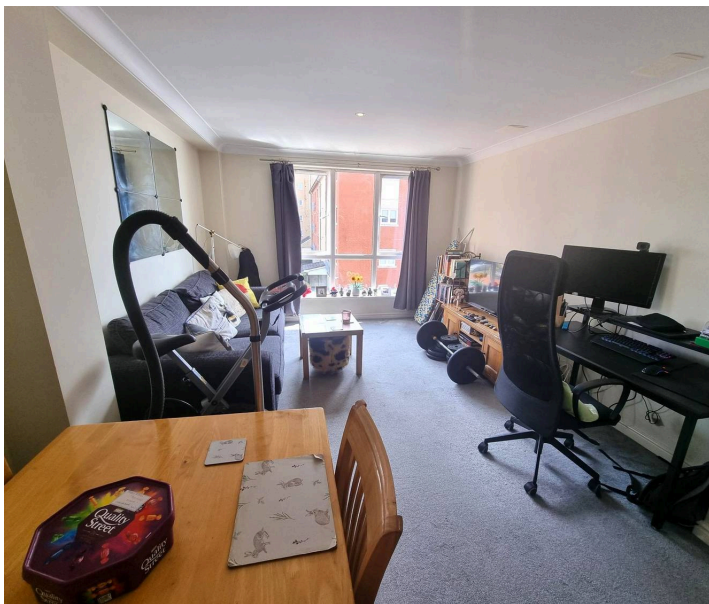
Council Tax band: C

Tenure: Leasehold

EPC Energy Efficiency Rating: B

EPC Environmental Impact Rating: B

- ONE BEDROOM UPPER FLOOR APARTMENT
- CHANNEL VIEWS
- ORIGINAL WATERFRONT LOCATION
- CLOSE TO ALL LOCAL AMENITIES
- SHORT DISTANCE TO BARRY ISLAND
- CLOSE TO PUBLIC TRANSPORT
- IDEAL FOR FOR FIRST TIME BUYER
- NO ONGOING CHAIN





Communal Hallway

Ceramic tiled flooring. Wall mounted letterboxes. Staircases rising to upper floors. Built in cupboards housing meters. Half glazed doors giving access to rear car park.

Hallway

Fitted carpet. Wall mounted entry phone. Two built in storage cupboards one housing a combination boiler. Doors into :-

Open planned Lounge/Kitchen/Dining

10' 9" x 16' 2" (3.28m x 4.93m)

Fitted carpet, radiator, window to side with views across the Bristol Channel. Flat plastered walls and ceiling. Neutral décor. Open planned into :-

Kitchen area.

6' 5" x 9' 6" (1.96m x 2.90m)

Wood effect vinyl flooring. A range of base and eye level units with complementing worksurfaces. Inset single drainer sink with mixer tap over. Built in oven with four ring gas burner hob and extractor fan over. Spaces for washing machine and fridge/freezer. tiling to splashbacks.

Bedroom

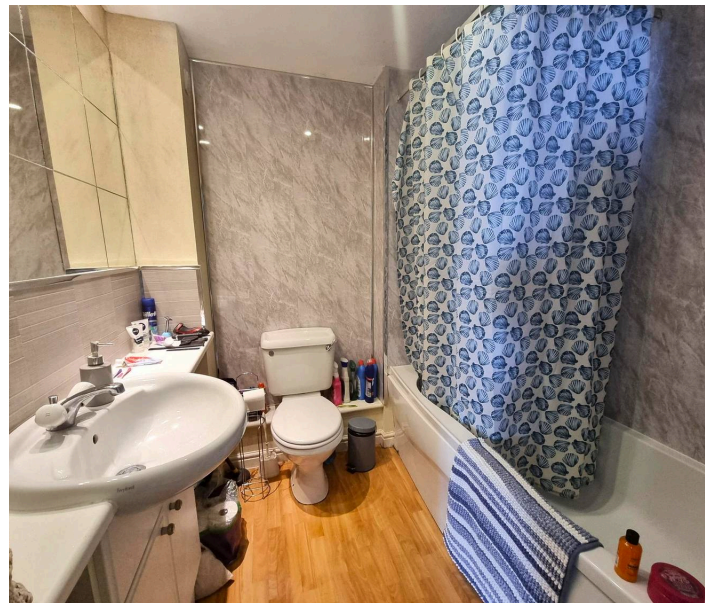
13' 2" x 10' 1" (4.01m x 3.07m)

Fitted carpet, radiator, flat plastered walls and ceilings. Neutral décor. Built in wardrobe. Radiator.

Bathroom

6' 2" x 6' 5" (1.88m x 1.96m)

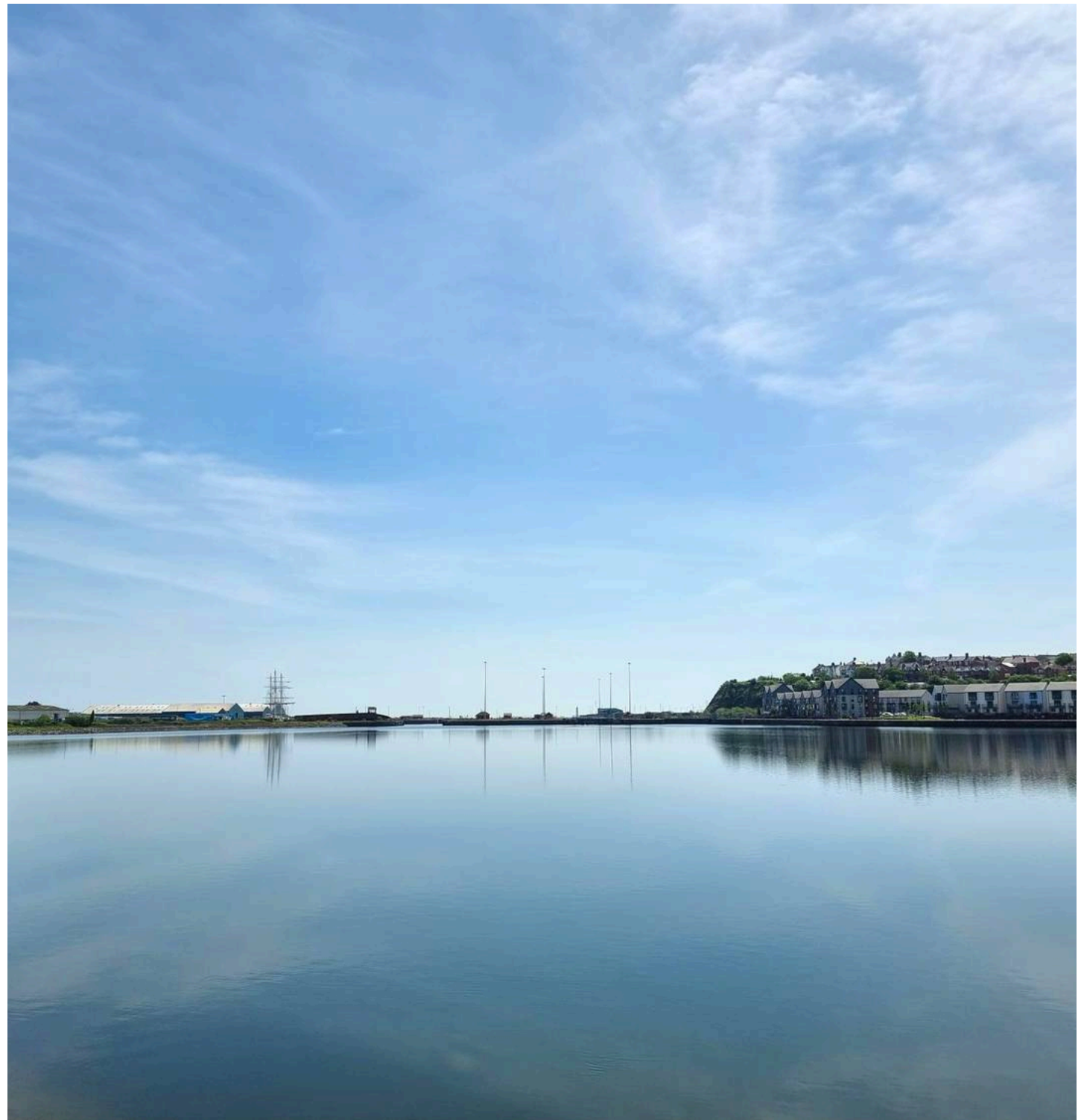
Wood effect vinyl flooring. A three piece suite in white comprising of a close coupled WC, wash hand basin inset into a vanity unit and a panelled bath with shower running from main water supply, shower rail and curtain. Tiling and aqua style boarding to splashbacks. Radiator.

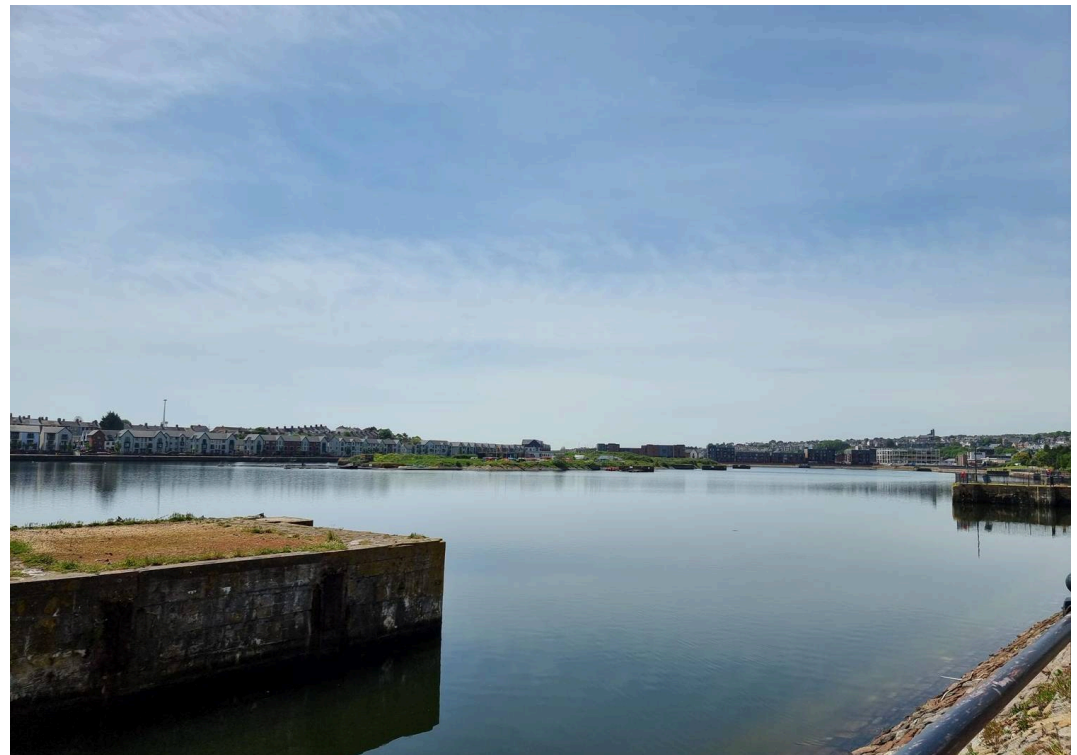
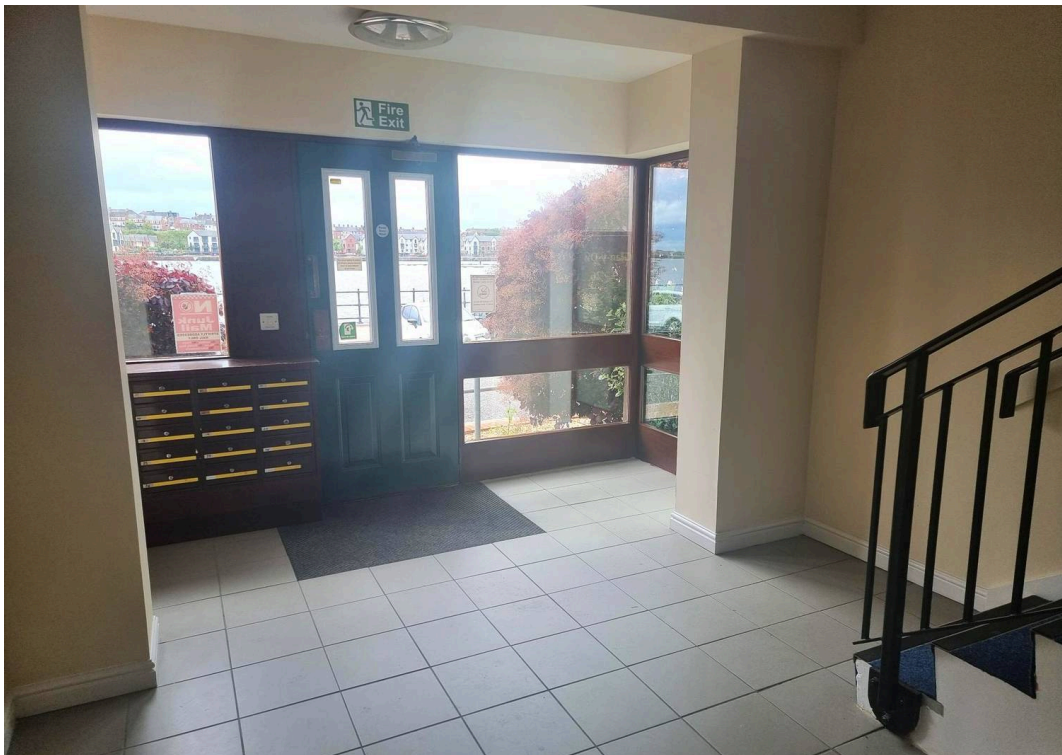


ALLOCATED PARKING

1 Parking Space

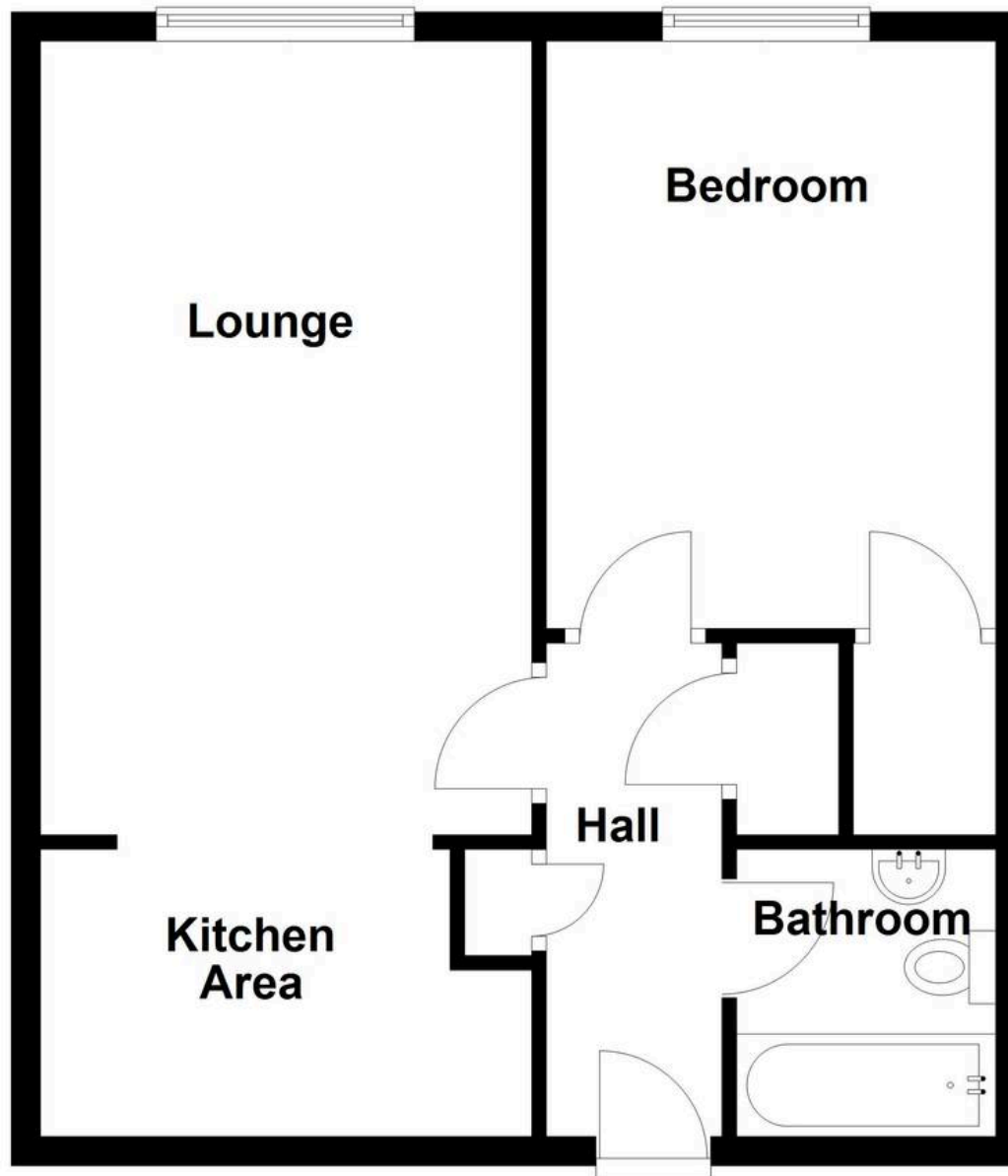
One allocated parking space to the rear





Ground Floor

Approx. 51.1 sq. metres (549.8 sq. feet)



Total area: approx. 51.1 sq. metres (549.8 sq. feet)



Daniel Matthew Estate Agents Barry

14 High Street Barry, Vale of Glamorgan - CF62 7EA

01446502806

barry@danielmatthew.co.uk

www.danielmatthew.co.uk/

DanielMatthew
ESTATE AGENTS