

HUNTERS®

HERE TO GET *you* THERE

Main Street, Cononley

Price £219,500

Property Images



HUNTERS®

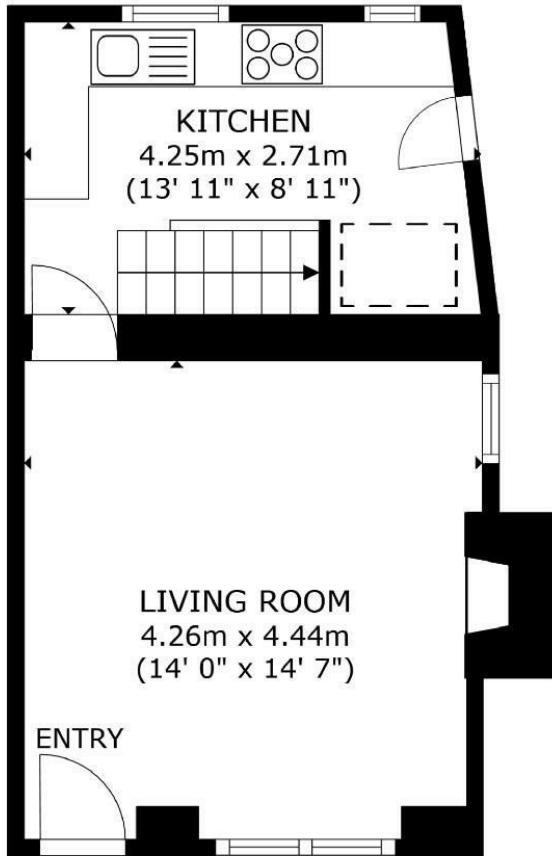
HERE TO GET *you* THERE

Property Images

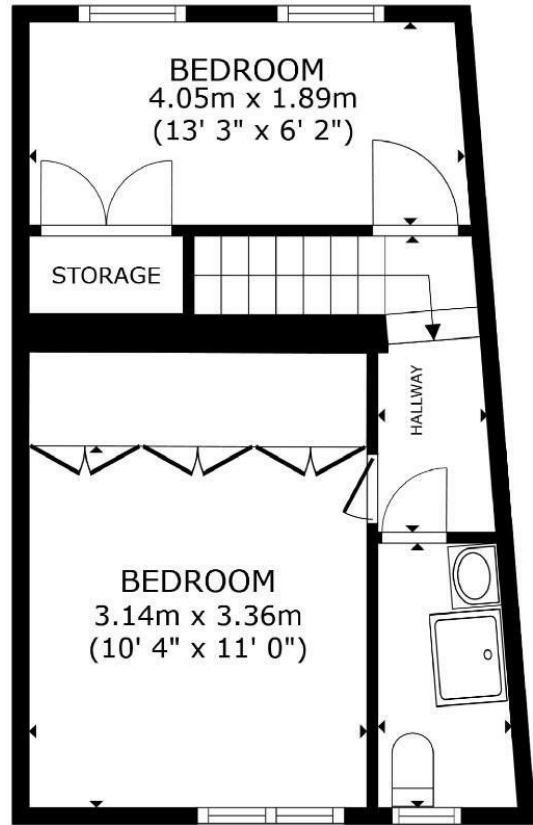


HUNTERS®

HERE TO GET *you* THERE



FLOOR 1



FLOOR 2

SIZES AND DIMENSIONS ARE APPROXIMATE, ACTUAL MAY VARY.

Energy Efficiency Rating		Current	Potential
Very energy efficient - lower running costs			
(92 plus) A			
(81-91) B			
(69-80) C			
(55-68) D		57	
(39-54) E			
(21-38) F			
(1-20) G			
Not energy efficient - higher running costs			
England & Wales	EU Directive 2002/91/EC		



Why would you live in Leeds or the suburbs when you can commute from the picturesque village of Cononley in just 35 minutes, with up to 40+ trains each weekday starting at 05:50.

This delightful Victorian stone-built semi-detached cottage is a true gem waiting to be discovered. Boasting a perfect blend of character and modernity, this two-bedroom property has been lovingly renovated to offer a charming living space filled with attractive features.

Step inside to find a spacious yet cosy living room with a feature window, a multi-fuel stove and exposed beams creating a warm and inviting atmosphere. The modern fitted kitchen is a chef's dream, complete with ample storage space within the stylish wall and base units and a built-in-pantry cupboard.

To the first floor there are two double bedrooms both featuring fitted wardrobes for added convenience, and with bedroom 1 having storage over the fitted wardrobes reached by a built-in ladder.

A contemporary house shower room features a vanity-free-standing wash basin, walk-in shower, WC and a towel radiator.

Outside, the property impresses with an elevated stone flagged sun-deck / patio is perfect for enjoying the summer sun. A convenient log store underneath the decked area ensures you're always prepared for cosy evenings by the fire.

Situated in the heart of Cononley, this home enjoys a slightly elevated position, offering easy access to the village's amenities. From a general store and post office to charming pubs, a primary school, and a railway station providing excellent transport links to Skipton, Keighley, Leeds, and Bradford, this location truly has it all.

Don't miss out on the opportunity to own this enchanting cottage in a sought-after Aire Valley village. With high-quality fixtures, gas central heating, and UPVC double glazed windows, this property is a rare find that promises a comfortable and convenient lifestyle. Embrace the charm of village living and make this cottage your own slice of countryside paradise.

On-Line-Bullet-Points

- Exceptional presentation & quality
- Very handy location for shop, pubs & train station
- Charming period semi-detached cottage
- Delightful living room with dual aspects
- Wood - burner
- Stunning break-fast kitchen with built-in pantry
- 2 double bedrooms both with fitted wardrobes
- NO CHAIN
- Great village and location
- 5 minutes on train to Skipton. 35 minutes to Leeds