

for sale

offers in the region of **£280,000** Freehold



Harton Way Birmingham B14 6PF

- Energy Rating: A
- Terraced House
- Four Bedrooms
- Loft Access
- Separate Family Bathroom



Property Details

Entrance Porch

Front facing sliding doors to

Entrance Hall

Wall mounted radiator, front facing stairs and doors to

Cloakroom

Double glazed window to the rear, low level W.C and access to central heating boiler.

Lounge 15' 2" x 12' 11" (4.62m x 3.94m)

Double glazed window to the rear, wall mounted radiator and doors to

Kitchen / Diner 14' 2" x 10' 5" MAX narrowing to 9' MIN (4.32m x 3.17m MAX narrowing to 2.74m MIN)

Front facing double glazed window, base units, double drainer sink, wall mounted radiator, sliding doors to

Utility Room

Rear facing door, Belfast sink and door to

Landing

Loft access, two storage cupboards, doors to

Bedroom 1 17' 3" MAX narrowing to 13' 5" x 9' 6" MAX (5.26m MAX narrowing to 4.09m x 2.90m)

Front facing double glazed window, wall mounted radiator and built in wardrobe.

Bedroom 2 15' 2" x 9' 9" (4.62m x 2.97m)

Rear facing double glazed window, wall mounted radiator and built in wardrobe.

Bedroom 3 11' 10" x 8' 10" (3.61m x 2.69m)

Rear facing double glazed window, wall mounted radiator and built in wardrobe.

Bedroom 4 10' 7" x 8' 11" (3.23m x 2.72m)

Front facing double glazed window, wall mounted radiator and built in wardrobe.

Bathroom

Front facing double glazed window, bath, low level W.C, hand wash basin, mixer shower, wall mounted radiator.

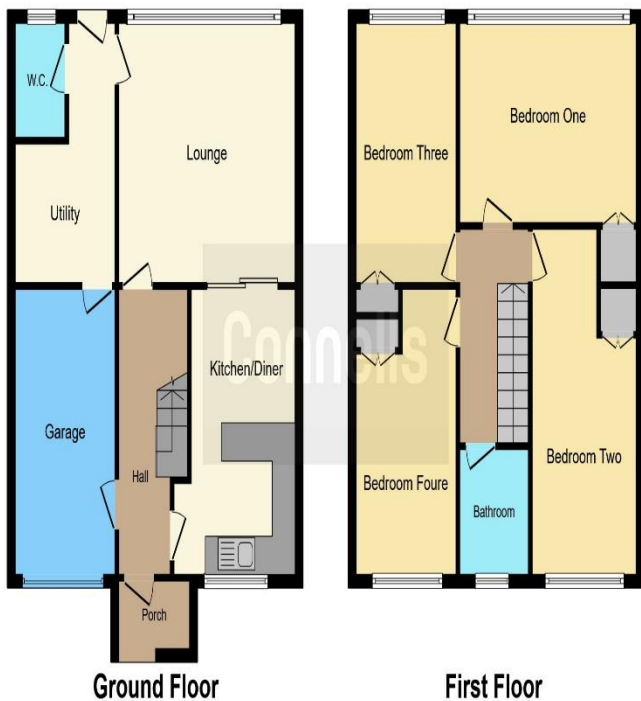
Outside

Off road Parking to the front. Patio steps and a tiered lawn garden to the rear.

Garage 17' 9" x 8' 7" (5.41m x 2.62m)

Front up and over door, door to the rear and door with entrance into the hall.





To view this property please contact Connells on

T 0121 443 3357
E kingsheath@connells.co.uk

93 High Street Kings Heath
 BIRMINGHAM B14 7BW

Property Ref: KTH308622 - 0011

Tenure:Freehold EPC Rating: A

Council Tax Band: C

This floor plan is for illustrative purposes only. It is not drawn to scale. Any measurements, floor areas (including any total floor area), openings and orientation are approximate. No details are guaranteed, they cannot be relied upon for any purpose and they do not form part of any agreement. No liability is taken for any error, omission or misstatement. A party must rely upon its own inspection(s). Powered by www.focalagent.com

1. MONEY LAUNDERING REGULATIONS Intending purchasers will be asked to produce identification documentation at a later stage and we would ask for your co-operation in order that there will be no delay in agreeing the sale. 2. These particulars do not constitute part or all of an offer or contract. 3. The measurements indicated are supplied for guidance only and as such must be considered incorrect. Potential buyers are advised to recheck measurements before committing to any expense. 4. We have not tested any apparatus, equipment, fixtures, fittings or services and it is in the buyers interest to check the working condition of any appliances.

Connells Residential is registered in England and Wales under company number 1489613, Registered Office is Cumbria House, 16-20 Hockliffe Street, Leighton Buzzard, Bedfordshire, LU7 1GN. VAT Registration Number is 500 2481 05.

