



BEAUFORT GREEN

Fulham Road, SW6

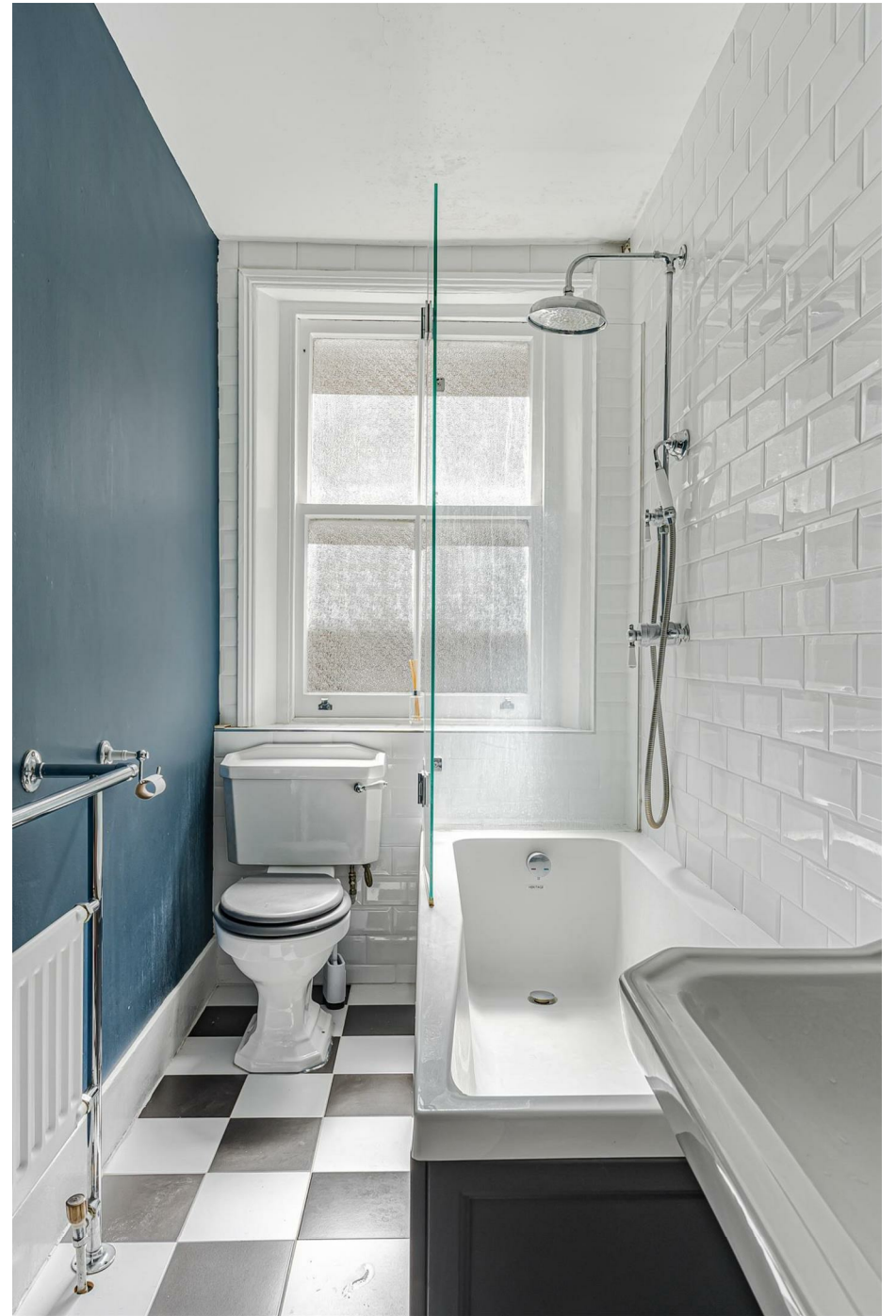
£550,000



A light and airy one-bedroom apartment set within an impressive red-brick mansion block, just moments from the River Thames. Beautifully presented throughout, the property boasts a spacious bay-fronted reception room filled with natural light, a newly renovated separate kitchen, and access to attractive communal gardens.

Ideally positioned on Fulham Road, Parsons Green and Bishops Park are both within easy reach, placing the apartment in one of Fulham's most sought-after residential locations.





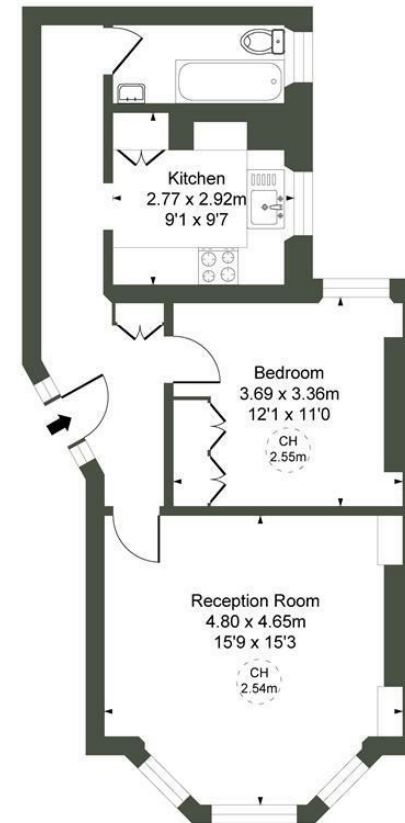
BEAUFORT GREEN



BEAUFORT GREEN

The Drive Mansions,
SW6

GIA (Approx) 56.43 sqm / 607 sqft



Second Floor

At a Glance.

- One-bedroom apartment
- Red-brick mansion block
- Moments from the Thames
- Bay-fronted reception room
- Newly renovated separate kitchen
- Communal gardens access

CH refers to the ceiling height in this plan. This floor plan is provided for illustrative purposes only and has been prepared in accordance with the RICS Code of Measuring Practice. It is not to scale, and all measurements and areas are approximate and should not be relied upon for accuracy. The plan should not be used for valuation or other decision-making purposes. Whilst every effort has been made to ensure accuracy, no responsibility is accepted for any errors or omissions.

BEAUFORT GREEN

02074594100

charlie@beaufortgreen.co.uk

263 New Kings Road
London
SW16 1DB