



Guide Price
£330,000

Freehold

3x  1x  1x 

**Poplar View, Boughton,
Faversham, Kent, ME13**

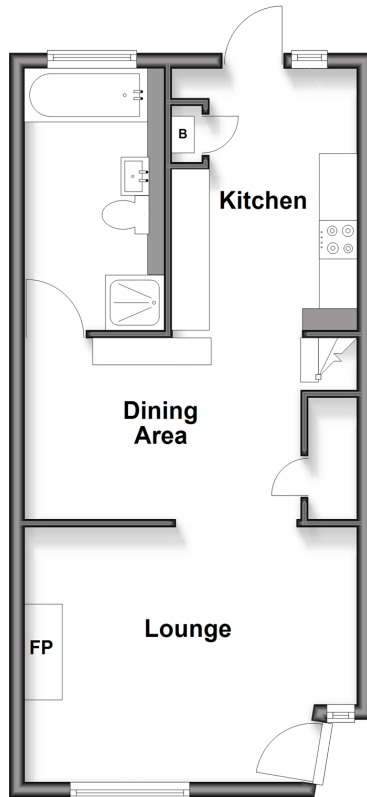
OVER 60?

Secure this property
for up to **59% less!**

Wards
Helping you move forwards

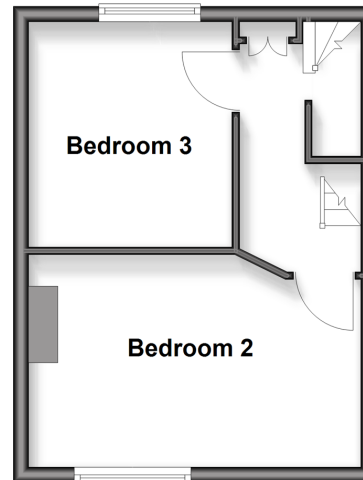
Ground Floor

Approx. 40.3 sq. metres (434.2 sq. feet)



First Floor

Approx. 25.6 sq. metres (275.7 sq. feet)



Second Floor

Approx. 14.6 sq. metres (156.7 sq. feet)



Accommodation

GROUND FLOOR

Lounge: 14'6 x 10'11 (4.42m x 3.33m)
Dining Area: 11'7 x 7'7 (3.53m x 2.31m)
Kitchen: 10'6 x 7'7 (3.20m x 2.31m)
Bathroom

FIRST FLOOR

Landing
Bedroom 2: 14'5 x 9'8 (4.40m x 2.95m)
Bedroom 3: 9'0 x 8'9 (2.75m x 2.67m)

SECOND FLOOR

Landing
Bedroom 1: 14'5 x 12'8 (4.40m x 3.86m)

OUTSIDE

Front and Rear Garden
Driveway For Several Vehicles



Main features

- Refurbished and extended family home offering a brand new interior
- Delightful views across open green
- New landscaped gardens with generous driveway
- Walking distance to Boughton village, shops, primary school and bus service
- No onward chain



Nearest Schools

Primary Schools: Boughton-under-Blean and Dunkirk Primary 1.6 miles, Graveney Primary 2.9 miles

Secondary Schools: The Abbey School 3.0 miles, Queen Elizabeth's Grammar School 3.4 miles



Transport Information

Train Stations: Selling 2.2 miles, Faversham 3.1 miles, Chilham 5.0 miles



Address

Poplar View, Boughton, Faversham, Kent, ME13



Directions

For directions to this property please contact us.



Call Faversham Branch 01795 535517 ■ wardsofkent.co.uk



- Legal advice should be taken to verify fixtures/fittings, planning, alterations and/or lease details
- Appliances & services are untested, dimensions are approximate and floor plans are not to scale
- Through a Homewise Home For Life Plan people aged 60+ can secure this property for up to 50% less, by purchasing a Lifetime Lease



10832446/20260105/PJ/PJ