



PORTAL WAY, W3

£2,800 pcm

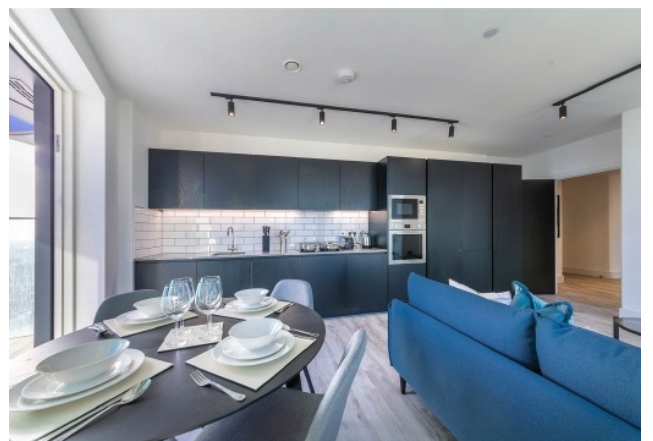
Situated on the 14th floor of a landmark residential tower, this premium 796 sq/ft 2-bedroom, 2-bathroom apartment offers an exceptional standard of high-rise living. The property features a spacious entrance hall with bespoke solid internal doors leading into a bright, open-plan reception room and a fully integrated granite-top kitchen with high-end appliances.

- Spacious 796 SQFT 14th Floor Layout
- Broad Private Glass Balcony
- Fully Equipped Gym & Holistic Wellbeing Suite
- Pet-Friendly Development with On-Site Dog Day Care



ABOUT THE HOME

Located within the iconic One West Point development in North Acton, residents are positioned in one of the best-connected areas in the UK. The property is just a two-minute walk from North Acton Station (Central Line) and eight minutes from Acton Main Line Station (Elizabeth Line), offering ultra-fast transport links across London. Everyday conveniences including Tesco Express, Sainsbury's, and Costa Coffee sit directly on your doorstep.





LiFE RESIDENTIAL

203 Trentham Court, Victoria
Road, London, W3 6BT
Sales: 020 3668 1112
Lettings: 020 3668 1111

Energy Rating: B. We aim to make our particulars both accurate and reliable. However they are not guaranteed; nor do they form part of an offer or contract. If you require clarification on any points then please contact us, especially if you're traveling some distance to view. Please note that appliances and heating systems have not been tested and therefore no warranties can be given as to their good working order.