



Birmingham Road, Nuneaton, CV10 9PL

**SHELDON  
BOSLEY  
KNIGHT**

LAND AND  
PROPERTY  
PROFESSIONALS



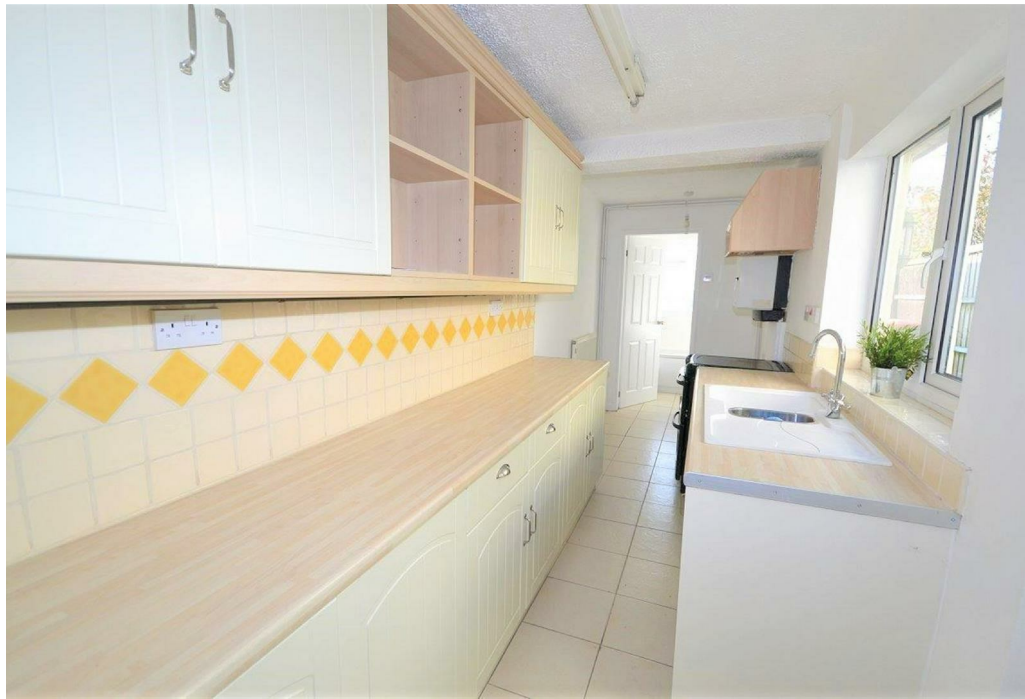
# Property Description

\*\*\*DEPOSIT ALTERNATIVE  
AVAILABLE\*\*\* \*\*\*AVAILABLE MARCH\*\*\*

Situated in the popular area of Ansley, this spacious two bedroom property benefits from being only a short walk from nearby amenities and benefits from gas fired central heating and upvc double glazing. Briefly comprising of the following: two reception rooms, kitchen, ground floor bathroom, landing, two double bedrooms and a good sized rear garden. Call now on 02476374949 to secure your viewing slot.











## Key Features

- Deposit Alternative Available
- Available March
- Popular Village Location
- Fitted Kitchen
- Two Reception Rooms
- Two Double Bedrooms
- Rear Garden
- EPC D Council Tax Band A

**£875 PCM**