

RICE+ROMAN



Kathleen Godfree Court

SW19 8LB

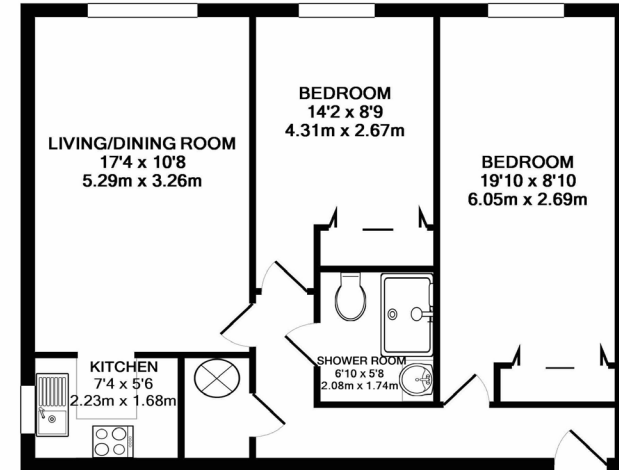


Living Area

Kathleen Godfree Court,, 80 Queens Road, Wimbledon

Kathleen Godfree Court, Queens Road, Wimbledon SW19 8LB

INTERNAL FLOOR AREA (APPROX.) 650 sq ft/ 60.4 sq m



FIRST FLOOR FLAT

Whilst every attempt has been made to ensure the accuracy of the floor plan contained here, measurement of doors, windows, rooms and any other items are approximate and no responsibility is taken for any error, omission or mis-statement. Made with Metroptix © 2018.

- Exclusively For Those Aged 60+
- Two Bedroom Apartment
- 1st Floor And Lift Accessible
- South Facing Over Gardens
- Redecorated Throughout
- Minutes From Wimbledon Town Centre

Price: £400,000
Service Charge: £5,017 PA
Ground Rent: £702 PA
Other Charges: £
Lease Length: 88 years left
Tenure: Leasehold

EPC Rating: C

For more information
please contact:

Rice & Roman
T: 01344 981246
E: info@riceandroman.co.uk
Lynwood Village, SL50FJ
www.riceandroman.co.uk

**RICE +
ROMAN**

Agents Notices - These property details are set out as a general outline only and do not constitute any part of an Offer or Contract. Any services, equipment, fittings or central heating systems have not been tested and no warranty is given or implied that these are in working order. Buyers are advised to obtain verification from their solicitor or surveyor. Fixtures, fittings and other items are not included unless specifically described. All measurements, distances and areas are approximate and for guidance only. Room measurements are taken to be the nearest 10cm and prospective buyers are advised to check these for any particular purpose, e.g. fitted carpets and furniture. This material is protected by the laws of copyright. The owner of the copyright is Countrywide Estate Agents. This property sheet forms part of our database rights and copyright laws. No unauthorised copying or distribution without permission.