



**Forrester Way, London E15**  
£465,000 Leasehold







## Description

Positioned within the highly coveted Garden Quarter development in Stratford, this elegant one-bedroom apartment offers contemporary living with an impressive array of exclusive residents' facilities. The development's modern architecture and beautifully maintained landscaped gardens create a sophisticated urban oasis in one of East London's most dynamic areas.

The apartment enjoys an elevated position that maximises natural light throughout, creating bright and airy living spaces. The entrance hall provides practical storage solutions with a large cupboard, leading to well-proportioned accommodation that maximises the 556 square feet efficiently. The double bedroom features thoughtfully designed built-in storage, while the modern bathroom suite showcases quality tiling and contemporary fixtures.

The heart of the home centres around the open-plan living area, where a sleek, fully integrated kitchen equipped with modern conveniences flows seamlessly into a generous living room.

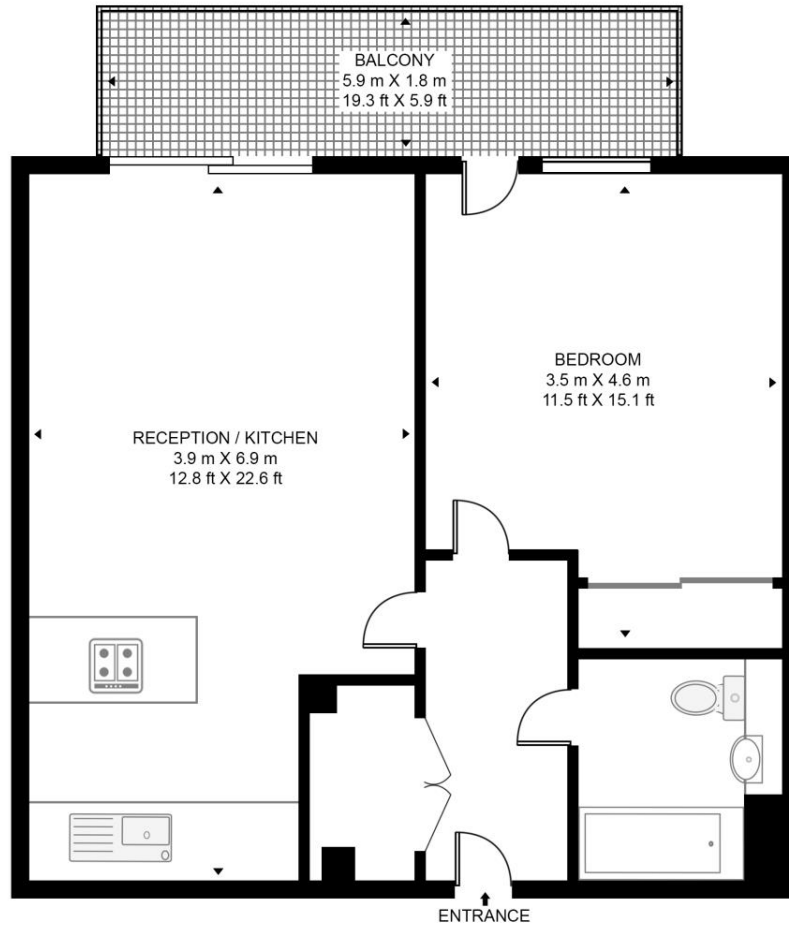
- Modern 1 Bedroom apartment
- 5th floor with lift access
- South facing balcony (Garden views)
- Residents-only Gym
- 24 Hour Concierge Service
- 0.4 miles from Stratford Underground Station
- Approx. 556 sq. ft (51.7 sq. m.)
- EPC: B

# Floorplan

556 sq ft | 52 sq m

## WATERMAN HOUSE

APPROXIMATE GROSS INTERNAL FLOOR AREA 556 SQ.FT (51.7 SQ.M)



FIFTH FLOOR



This floor plan has been defined by the RICS Code of Measurement. This floor plan and all others are for approximate representative purposes only and upon usage is agreed to as such by the client.  
WWW: [hdvirtualart.com](http://hdvirtualart.com) | TEL: 0203.974.1567 | EMAIL: [info@hdvirtualart.com](mailto:info@hdvirtualart.com)

Stratford  
5 Station Street,  
London E15 1DA  
+4420 3147 1500  
[Lettingsstratford@eu.jll.com](mailto:Lettingsstratford@eu.jll.com)

*Urban living, your way.*

[jll.co.uk/residential](http://jll.co.uk/residential)

© 2019 Jones Lang LaSalle IP, Inc. All rights reserved. All information contained herein is from sources deemed reliable; however, no representation or warranty is made to the accuracy thereof.

