



7 Queens Road, Loughton  
Loughton

Guide Price £875,000



## 7 Queens Road

Loughton

This attractive and well-proportioned four-bedroom home on Queens Road, Loughton offers an ideal blend of period charm and contemporary living. Arranged over two floors the property has been thoughtfully designed to provide bright, spacious, and flexible accommodation that's perfect for modern family life.

- Guide Price £875,000 - £900,000
- Semi Detached Family Home
- Off Street Parking
- Four Bedrooms
- Spacious Kitchen/Dining Area
- Well Presented
- Potential To Extend (stpp)



A welcoming entrance hall leads to a spacious living room, featuring a bay window that fills the space with natural light. To the rear, an impressive open-plan kitchen and dining room stretches nearly 29 feet in length, offering ample space for family meals and entertaining, with direct access to the rear garden. A convenient guest WC completes the ground floor.

Upstairs, there are four well-sized bedrooms, each offering a comfortable and versatile layout. The principal bedroom is generously proportioned, while the remaining rooms are ideal for children, guests, or home working. A stylish family bathroom serves this level, finished to a modern standard.

Located on the sought-after Queens Road in Loughton, the property enjoys excellent access to a vibrant mix of local shops, cafés, and amenities. Well-regarded schools and green spaces are close by, and transport links offer convenient connections to London and surrounding areas, making it an ideal choice for families and commuters alike.

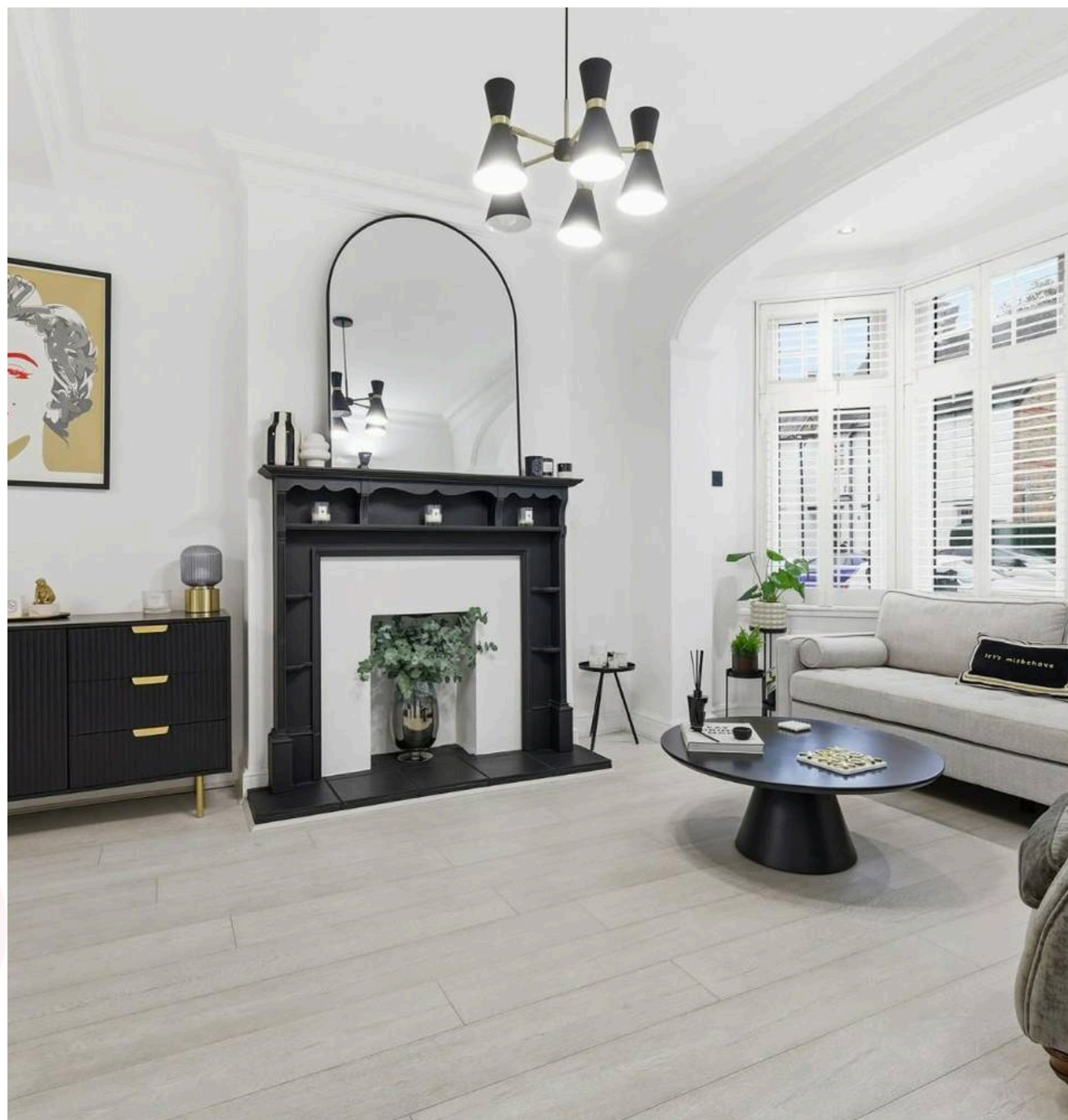
This superb home combines character, space, and an excellent location, creating the perfect setting for contemporary family living.

Council Tax band: E

Tenure: Freehold

EPC Energy Efficiency Rating: D

EPC Environmental Impact Rating: E







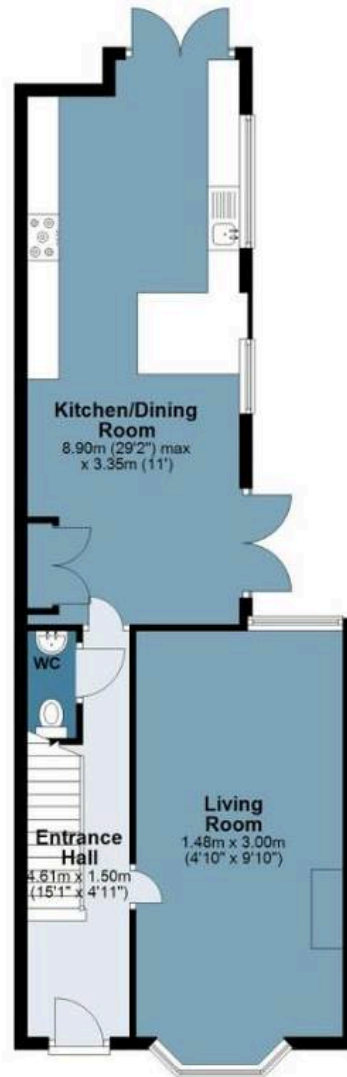
# Queens Road

Approx. Gross Internal Area 124.6 Sq M ( 1340.7 Sq Ft )

BUTLER & STAG



**Ground Floor**  
Approx. 44.9 sq. metres (483.4 sq. feet)



**First Floor**  
Approx. 63.1 sq. metres (679.1 sq. feet)



Measurements are approximate and for illustration purposes only. While we do not doubt the accuracy and completeness, we advise you conduct a careful independent assessment of the property to determine monetary value.

# FROM EAST LONDON ENERGY TO WEST ESSEX EASE

## We Make Moving Home Easy.

At Butler and Stag, we do more than just connect London to West Essex – we make the move seamless. With offices spanning from vibrant East London to the tranquillity of West Essex, we understand the nuances of each area and the journey people take between them. Our marketing goes beyond standard listings, showcasing every property with precision, creativity, and reach that others simply can't match. Coupled with an unparalleled attention to detail, from first enquiry to final move-in, we ensure every client and customer feels informed, supported, and confident. Simply put, we do the little things that make a big difference, setting us apart in every step of the property experience.



LONDON   STRATFORD   SOUTH WOODFORD   BUCKHURST HILL   LOUGHTON   EPPING   BEYOND

# Like what you see? Let's talk

Book your **FREE** valuation now



01992 667666

theydon@butlerandstag.com

4 Forest Drive, Theydon Bois, CM16 7EY

[butlerandstag.uk](https://www.butlerandstag.uk)

IMPORTANT NOTICE - These particulars have been prepared in good faith and they are not intended to constitute part of an offer or contract. We have not performed a structural survey on this property and the services, appliances and specific fittings have not been tested. All photographs, measurements, floor plans and distances referred to are given as a guide and should not be relied upon.

BUTLER & STAG

