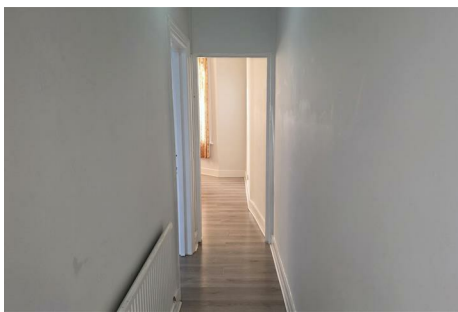




Parkfields

Estates



Beachcroft Avenue , Southall, UB1 1LE

Welcome to Beachcroft Avenue, Southall! This charming property is a delightful ground floor flat boasting two cosy bedrooms, perfect for family, Lounge, Fitted Kitchen, Bathroom and shared rear garden
Located With easy access to local amenities and transport links, convenience is at your doorstep.

Contact us today to arrange a viewing

Ealing Council Tax Band B

£1,900

15a Beachcroft Avenue

, Southall, UB1 1LE

 2

 1

 null

 D

- Ground Floor Flat
 - Kitchen
- 2 Bedrooms
 - Available Now
- Lounge



Directions





Floor Plan

These particulars, whilst believed to be accurate are set out as a general outline only for guidance and do not constitute any part of an offer or contract. Intending purchasers should not rely on them as statements of representation of fact, but must satisfy themselves by inspection or otherwise as to their accuracy. No person in this firms employment has the authority to make or give any representation or warranty in respect of the property.

