



## Saville Road, W4

£380 Per week

A top floor studio flat which has recently undergone complete refurbishment with a large open-plan living area, modern kitchen and a bathroom with a bath and separate shower.

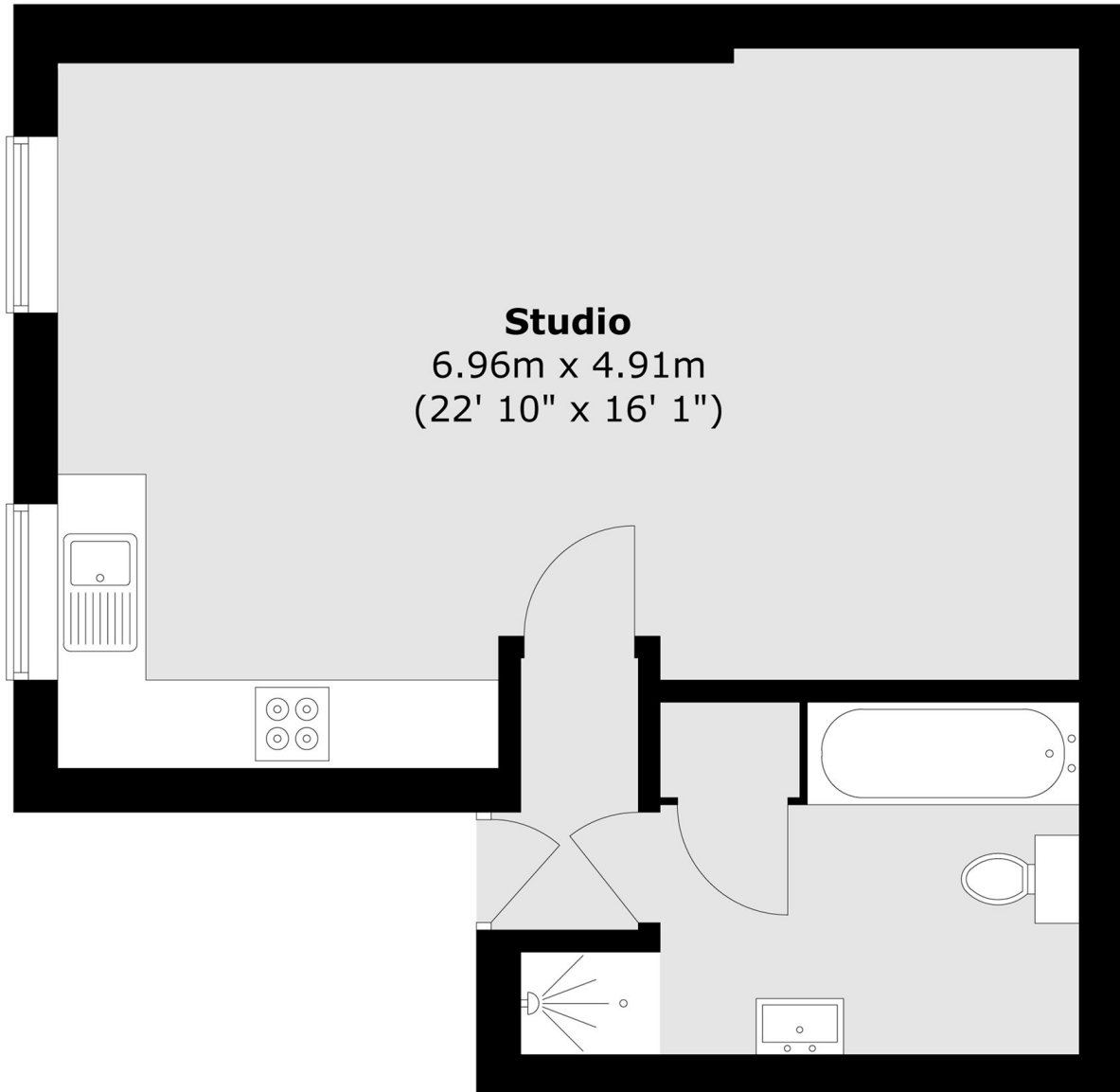
Saville Road is located just off of Acton Lane and is within half a mile of both Chiswick Park and Turnham Green tube stations.

### Features

- Top Floor
- Studio Apartment
- Professionally Managed
- Wood Flooring
- Modern Finish
- Central Location

Saville Road,  
London, W4

## Second Floor



Total area (approx.) : 41.6 sq. m (448 sq. ft)