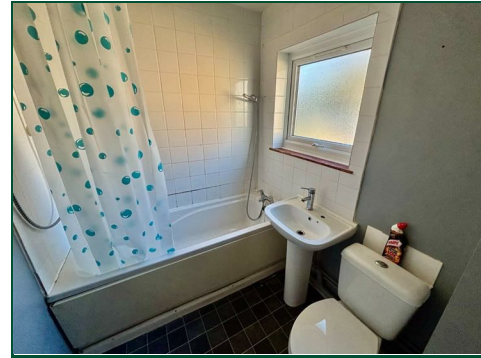




Entwood Drive

Overstone Lodge, Northampton

oriordanbond
SALES & LETTINGS



Entwood Drive

Overstone Lodge

NN3 8SH

GUIDE PRICE £190,000

A modern three bedroom terraced property situated in this popular location of Overstone Lodge. Offered for sale with no onward chain, the property provides good access to local amenities, schools and Weston Favell Shopping Centre.

The accommodation comprises entrance hall, shower room, sitting room, dining room, fitted kitchen, three first floor bedrooms and a three-piece family bathroom. Outside is an enclosed garden to the rear, a front garden and ample nearby communal parking. Further benefits include uPVC double glazing and gas radiator heating. (B/915/M)

Additional information

- Council Tax Band: A
- Energy Efficiency Rating: D

Viewing

Viewing strictly by appointment – details below

Disclaimer

O'Riordan Bond Estate Agents Limited has not tested apparatus, equipment, fittings or services and so cannot verify they are in working order. The buyer is advised to obtain verification from their solicitor or surveyor.

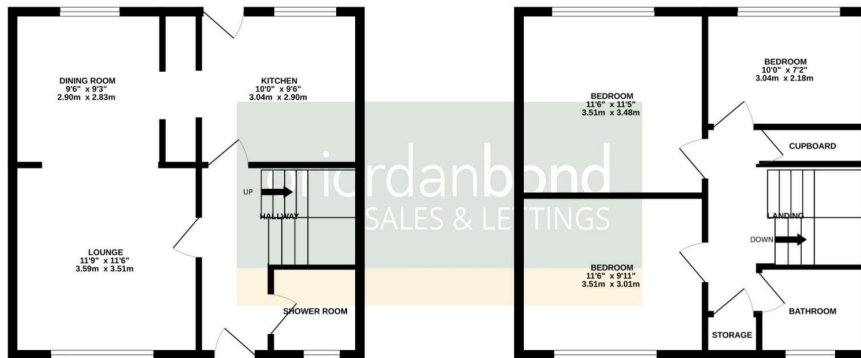
O'Riordan Bond Weston Favell Sales

01604 784007

westonfavell@oriordanbond.co.uk

GROUND FLOOR
458 sq.ft. (42.5 sq.m.) approx.

1ST FLOOR
458 sq.ft. (42.5 sq.m.) approx.



TOTAL FLOOR AREA - 915 sq.ft. (85.0 sq.m.) approx.

Whilst every attempt has been made to ensure the accuracy of the floorplan contained here, measurements of doors, windows, rooms and any other items are approximate and no responsibility is taken for any error, omission or mis-statement. This plan is for illustrative purposes only and should be used as such by any prospective purchaser. The services, systems and appliances shown have not been tested and no guarantee as to their operability or efficiency can be given.
Made with Metropix 02025

